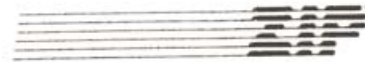




# Instruction Manual



5601 W. Slauson Ave.  
Suite 190  
Culver City, CA 90230  
TEL (213) 337-1313  
FAX (213) 337-9337

## GUARANTEE

Zip Technology offers a thirty day, unconditional, money back guaranty for the ZIP CHIP II-4 (Model 4000) and the ZIP CHIP II-8 (Model 8000).

## WARRANTY

Zip Technology offers a one year warranty on the ZIP CHIP II-4 (Model 4000) and the ZIP CHIP II-8 (Model 8000).

To qualify for the warranty for your ZIP CHIP, please be sure to complete and mail your warranty card in this manual. Don't forget to include the date and place of purchase.

**IMPORTANT:** This warranty is subject only to factory defects that affect performance of the ZIP CHIP.

Each ZIP CHIP is inspected thoroughly for physical defects prior to shipping. Any ZIP CHIP returned for replacement which has sustained physical damage through mishandling will be subject to a \$ 50.00 replacement fee for the ZIP CHIP II-4 (Model 4000) or an \$ 80.00 replacement fee for the ZIP CHIP II-8 (Model 8000) before a new ZIP CHIP is shipped.

For this reason, it is important that when returning a ZIP CHIP, it should be packed in a sturdy box with padding and/or reinforcement of some kind. In this way the customer will not be penalized for returning a chip which suffers only from performance defects, but was then damaged during shipment because of careless shipping practices.

To receive a refund or replacement for a ZIP CHIP please follow the RMA procedure in this manual.

## TABLE OF CONTENTS

<b>INTRODUCTION</b>	1
<b>HOW TO USE THE CHIP REMOVAL TOOL</b>	3
<b>I. INSTALLATION</b>	5
Locating the Microprocessor	4
Installing the ZIP CHIP in an Apple II	5
Installing the ZIP CHIP in an Apple IIe	7
Installing the ZIP CHIP in an Apple IIc	9
Opening the Apple IIc	9
Installing the ZIP CHIP	9
Closing the Apple IIc	10
<b>II. HOW TO USE A ZIP CHIP</b>	11
To run at full speed (4 Mhz.)	11
To run at normal speed (1 Mhz.)	12
<b>III. ZIP UTILITY PROGRAM</b>	12
System Check	12
ZIP CHIP Configure Program	14
Starting Up A Non-Standard DOS Disk	15
<b>IV. TROUBLESHOOTING GUIDE</b>	17
<b>V. RMA PROCEDURE</b>	18
<b>VI. COMPATIBILITY SOFTWARE INSTRUCTIONS</b>	19
(Exclusive ZIP software ONLY required for those ZIP CHIP users who desire compatibility with special DMA devices like CONTROL DATA's Corvus/OMNINET NETWORK.)	

ZIP Technology may make improvements and/or changes to the product described in this manual at any time without notice. All information presented here has been carefully checked by technical personnel, however ZIP Technology makes no guarantee concerning the validity or completeness and will not be responsible for the use thereof. Changes may periodically be made in the information herein. These changes will be incorporated in later editions of this publication.

ZIP Technology recommends that the owner make a backup of the ZIP Utility disk, and use the backup for normal work.

- © ZIP CHIP™ is a Trade Mark of ZIP Technology.
- © Apple, Apple II Plus(+), Apple IIe, Apple IIc, and Macintosh are registered Trade Marks of Apple Computer Co.
- © Ramfactor and RAMWORKS are registered Trade Marks of Applied Engineering.

ZIP CHIP PATENT NUMBER 4,794,523

## NOTES OF INTEREST ABOUT YOUR ZIP CHIP

Congratulations on the purchase of your new ZIP CHIP! The ZIP CHIP is a technological marvel. Inside the small 40 pin package is the equivalent of 350 integrated logic circuits. In addition, there are hundreds of tiny gold wires connecting all of the internal parts. The automated assembly guarantees that every ZIP CHIP will be constructed using the same standards with which the original Apple microprocessor was constructed. Your computer sees the ZIP CHIP as a standard 65C02 microprocessor, however you will see ZIP CHIP transform your Apple computer into one of the fastest computers on the market.

## INTRODUCTION

The ZIP CHIP is a replacement microprocessor for your Apple II series computer. ZIP CHIP has been thoroughly tested and found to be completely compatible with all hardware and software. In addition ZIP CHIP will access all of your computer's memory and accelerate the first two megabytes.

AppleWorks will operate at maximum speed and efficiency like never before and your desktop publishing program will 'Zip' along, out-performing both the IBM and Macintosh versions. ZIP CHIP also has 19 speeds that can be selected easily by using the ZIP Utility disk.

The ZIP CHIP default (automatic) configuration will satisfy 98% of Apple users. The other 2% might want to configure the ZIP CHIP for their particular configuration (more about that later). However, for most of you, all that is required is to plug in the ZIP CHIP and turn on your Apple. The rest is automatic.

How do you know if you are in the 2% category? Simple! If your hardware configuration (computer type, II+, IIe, or IIc, and the type of peripheral cards you use), is listed on Page 2, then you may need to configure your ZIP CHIP using the step by step instructions in CHAPTER III.

## LIST OF HARDWARE CONFIGURATIONS

You will want to configure your ZIP CHIP if you have the following:

- 1) Apple II+ with a Titan 128K RAM card  
Apple II+ with a Legend 32K RAM card
- 2) If you wish to change speeds other than default (full) speed or normal.
- 3) If you have a peripheral card in a slow slot that can run fast.  
Such as:
  - hard disk drive
  - Ramfactor
  - Apple Extended memory
  - Printer cards
- 4) If you have a peripheral card in a fast slot that must run at normal speed.  
Such as:
  - 5 1/4" disk controller
  - 3 1/2" disk controller
  - Modem (most)

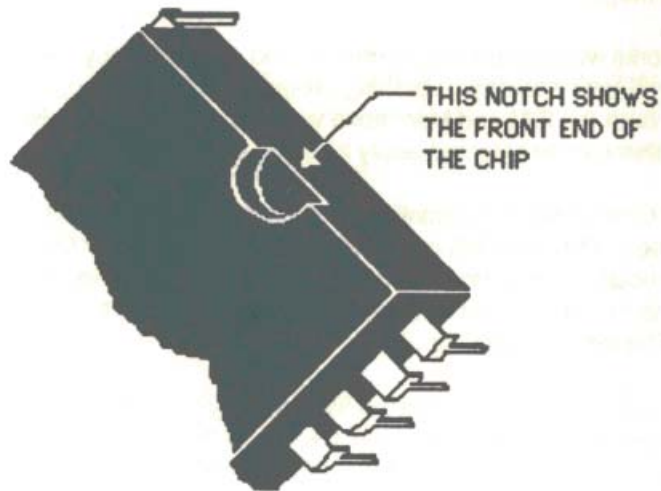


Figure 1: Front end of a CPU chip showing Notch.

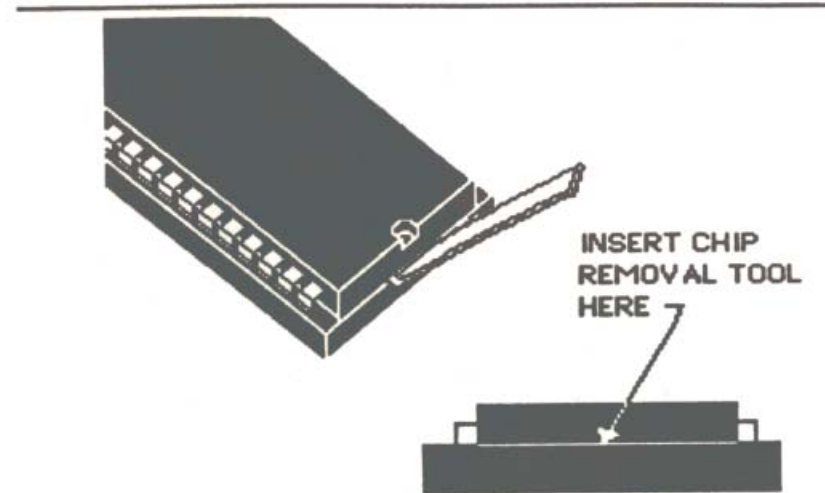


Figure 2: Using the Chip Removal Tool.

## HOW TO USE THE CHIP REMOVAL TOOL

Before you start your installation of ZIP CHIP, PLEASE SEE IMPORTANT WARNING, CHAPTER I, INSTALLATION.

A description of the Chip Removal Tool and its proper use (see figure 2) follows:  
The Chip Removal Tool was designed especially for easy, do-it-yourself removal of your 6502 or 65C02 microprocessor. Using this tool, anyone can install a ZIP CHIP...NO TECHNICAL EXPERIENCE IS NECESSARY. However, if you do not feel confident in performing the installation, your local Apple dealer can install it for a small fee. The short end of the Chip Removal Tool is wedged between the CPU and the socket as shown in Figure 2. If there is a problem inserting the tool between the CPU and the socket, use a fine point screwdriver to begin prying up the chip. With the bent end under the chip, gently pull back on the long end of the tool until the chip is lifted from the socket. Now, follow the same procedure on the opposite end of the chip. Once both ends of the chip are free, carefully remove the chip by hand from the socket. Be very careful not to bend any of the pins on the CPU chip. Place your former CPU chip in the black static-free foam of the match-book cover supplied with the ZIP CHIP for protective safe-keeping.

## APPLE IIc OWNERS

If you have an Applied Engineering or Checkmate memory installed: The ZIP CHIP will replace the microprocessor located directly on the memory expansion board. The microprocessor is the large part closest to the front of the Apple IIc. (refer to the section "LOCATING THE MICROPROCESSOR").

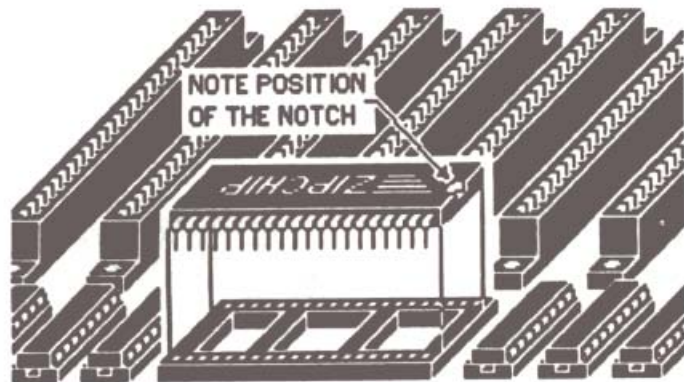


Figure 3: Installing ZIP CHIP in an Apple II Plus

## LOCATING THE MICROPROCESSOR

The microprocessor (also known as a CPU) is the Brain within the computer. The ZIP CHIP replaces that Brain which is currently in your computer. To locate the microprocessor so that it can be removed, the instructions will refer to a particular row letter (A,B,C...) and column number (1,2,3...) The rows and columns refer to letters and numbers printed directly on the large circuit board inside the computer. The row letters are labeled left to right on the edge of the circuit board nearest the keyboard. The column numbers are written on the edges of the circuit board. Travel across the circuit board where the rows and columns meet to find the microprocessor. The microprocessor will have markings on the top. These markings can be numbers such as: 6502, 65C02, 65C03. Additionally, the markings 6502 or 65C02 can be found written on the circuit board adjacent to the microprocessor. Please call our Tech Support line if you have any problems locating the microprocessor.

THE TECH SUPPORT TELEPHONE NUMBER IS (213) 337-1734.

## CHAPTER I – INSTALLATION

### NOTE: IMPORTANT WARNING

Both the microprocessor (6502,65C02) in your Apple and the ZIP CHIP can be damaged by static electricity which can build up in all types of environments. It is very important that you ground yourself prior to removing the microprocessor or installing your ZIP CHIP. To ground yourself, touch the metal case of the Apple power supply ( Power supply cord must be connected to a 3-prong wall socket for the grounding to take place). Power supply should be "OFF" during the grounding procedure.

Installing the ZIP CHIP in an Apple II(+) Plus is a simple step by step process:

1. Turn off all power to the Apple.
2. Remove the cover from the Apple.
3. TOUCH POWER SUPPLY TO GROUND YOURSELF BEFORE PROCEEDING.
4. Carefully remove any plug-in boards that prevent easy access to the 65C02 or 6502 microprocessor. The microprocessor is located on the motherboard on row H Columns 6 through 9. It is the largest chip in the Apple (Please see "LOCATING THE MICROPROCESSOR", Page #4).
5. Slide the short end of the supplied Chip Removal Tool into the small gap between one end of the microprocessor and its socket.  
\*NOTE: TAKE CARE NOT TO GET THE TOOL UNDER THE SOCKET.
6. Gently rock the long end of the tool prying the end of the microprocessor from the socket.
7. The same procedure will apply to the opposite end of the microprocessor.

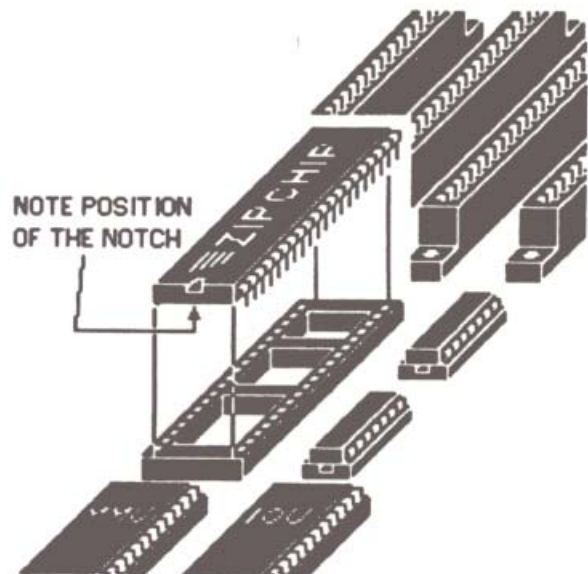


Figure 4.

8. Lift the microprocessor out of the socket and put it in the black anti-static foam that comes with the ZIP CHIP.
9. Take the ZIP CHIP and place it over the empty socket. Be sure the notched end matches *Figure 3* (Page 4).
10. Slowly press the ZIP CHIP down into the socket. Be sure that all of the pins are lined-up and going into their corresponding socket holes.
11. When the ZIP CHIP is in place, firmly press down each end to "seat" the ZIP CHIP.
12. Replace any boards you may have removed. Put the cover back on and you are ready to go.

Congratulations! You have installed your ZIP CHIP! If your particular are not listed in the "LIST OF HARDWARE CONFIGURATIONS" (Page 2)...then all you have to do is turn "ON" your computer. ZIP CHIP will do everything else automatically for you... That's all there is to it!

## INSTALLATION FOR THE IIe

Installing the ZIP CHIP in an APPLE II e is a simple step-by-step process.

1. Turn off all power to the computer.
2. Remove the cover from the computer.
3. TOUCH THE POWER SUPPLY CASE TO GROUND YOURSELF BEFORE PROCEEDING.
4. Locate the 65C02 CPU ( please read "LOCATING THE MICRO-PROCESSOR" Page 4).  
It is located on row B, column 4 and is the 40 pin chip nearest expansion slots. The front (notch) of the chip (65C02 and the ZIP CHIP) will be facing towards the keyboard.
5. Slide the short end of the supplied Chip Removal Tool into the gap (between the microprocessor and the socket) under the front end of the microprocessor.  
**\*NOTE: TAKE CARE NOT TO GET THE TOOL UNDER THE MICROPROCESSOR SOCKET.**
6. Rock the long end of the tool, gently prying up the chip from the socket. Apply the same procedure to the opposite end of the microprocessor.
7. Gently remove the chip from the computer and place it in the matchbook cover supplied with your ZIP CHIP for safe-keeping.
8. Take the ZIP CHIP and hold it so that the notched end faces the keyboard.
9. Lower the ZIP CHIP to the socket.
10. Slowly press the ZIP CHIP into the socket. Be sure that all pins are going into the socket holes.
11. When the ZIP CHIP is in place, firmly press down on each to "seat" the ZIP CHIP.
12. Replace the computer cover...and you are ready to go!

Congratulations! You have installed your ZIP CHIP! If your particular is not listed in the "LIST OF HARDWARE CONFIGURATIONS" (Page 2)... then all you have to do is turn "ON" your computer, ZIP CHIP will do everything else for you... That's all there is to it!

## INSTALLING THE ZIP CHIP IN THE APPLE IIc

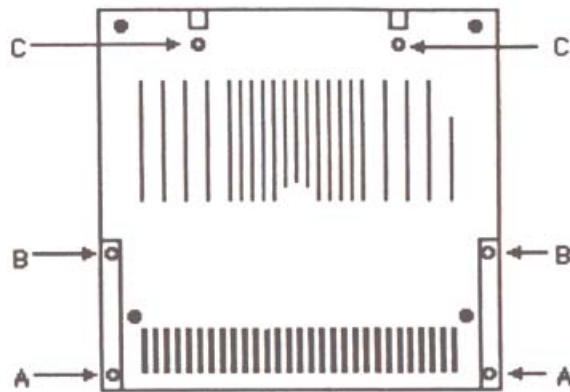


Figure 5: Apple IIc Case Bottom ( Showing screws ).

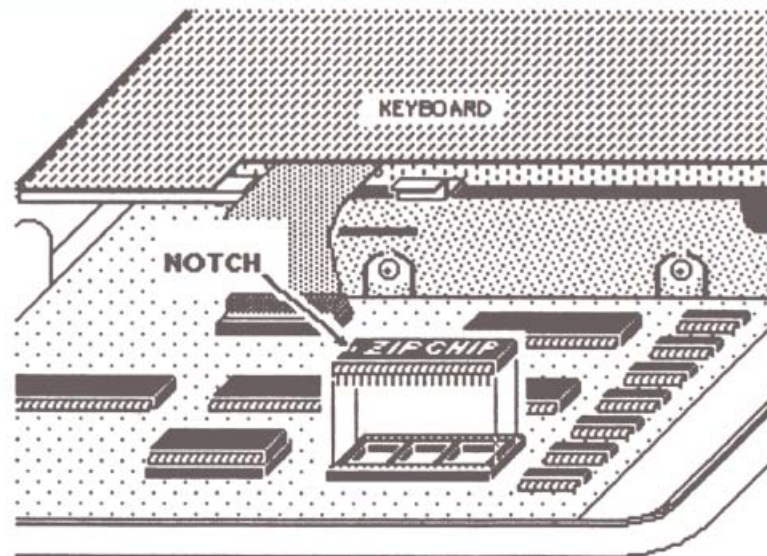


Figure 6: Installing ZIP CHIP in the Apple IIc.

Installing the ZIP CHIP involves three processes.

1. Opening the Apple IIc,
2. Installing the ZIP CHIP and
3. Closing the Apple IIc.

All of these are simple step-by-step processes. It is recognized that most IIc owners have never opened their computers and may wish to have the chip by a local Apple Dealer. While that may be done, it is not necessary as the installation is quite simple. The only tool required other than the supplied Chip Removal Tool is a small Phillips screwdriver and a little patience.

Opening the Apple IIc - Follow this process carefully step-by-step and you should have no trouble opening the Apple IIc.

1. Turn power "OFF" to the computer, and remove all wires and cables going to it. Remove any disk that may be in the drive.
2. Turn the computer upside down and unscrew the two screws (marked 'A' in *Figure 5*) at the keyboard end corners.
3. Unscrew the two recessed screws up the side from the corners, (marked B in the illustration.)
4. Turn the computer right side up to drop these screws free. At the back of the computer, where the handle connects to the case, there are two screws, (marked 'C' in the illustration.) Unscrew both of these.
5. Turn the computer right side up with the keyboard facing you.
6. Slide the short end of the Chip Removal Tool into the crack between the two halves of the case, at approximately the space bar point on the case.
7. Gently rock the tool up until the case lock pops free. Lift up on the top half of the case and it will pop free of the computer.
8. Gently lift the keyboard and lay it upside down on top of the disk drive.

## INSTALLING THE ZIP CHIP

10. Locate the 6502 or 65C02 CPU chip. ( Please read " LOCATING THE MICROPROCESSOR ") It is the long chip to the right of the speaker on the front of motherboard. It is the longer of the two chips in the sockets; between rows 18 and 19 on E.
11. The front of the CPU chip is to the left, facing the speaker volume control of the computer.
12. Slide the short end of the Chip Removal Tool in the slot between the CPU chip and the socket. BE CAREFUL NOT TO GET THE TOOL UNDER THE SOCKET.
13. Gently rock the tool lifting the chip from the socket.
14. Apply the same procedure to the other end of the chip.
15. Grasp the CPU chip and remove it from the. Put it in the match-book cover supplied with the ZIP CHIP.
16. Take the ZIP CHIP and hold it so that the notched end faces left.
17. Lower the ZIP CHIP to the socket. Press the chip gently into the socket. Make sure that all the pins are into their corresponding holes in the socket.
18. When the chip is in place, firmly press down on each end to "seat" the chip.

## CLOSING THE APPLE IIc

19. Gently pick up the keyboard and turn it right side up. Lower the keyboard into place. The metal tab on the back end of the keyboard fits into a slot in the side of the disk drive.
20. Two models of the Apple IIc case top are known. One has the back attached to the case top, the other has back separate. In either case, the top is first hooked on the back and rocked forward and down the top of the computer.
21. Those cases with separate backs must be carefully assembled to be sure that the back is in the proper place as the top is installed. Press down firmly on the case top, just in front of the space bar. The case should snap together.
22. Press all around the front and sides of the case to the case top.
23. Turn the computer upside down and replace the screws.

NOTE: The recessed screws (B) are different from the other four. Take care not to overtighten the screws.

CONGRATULATIONS! You have just installed your ZIP CHIP! You may now proceed to CHAPTER II " HOW TO USE YOUR ZIP CHIP."

## \*\* A NOTE FOR APPLE IIc OWNERS \*\*

Apple IIc users are never required to use the configuration software. Just install your ZIP CHIP and... GO!

## CHAPTER II

### HOW TO USE YOUR ZIP CHIP

For most Apple II users the ZIP CHIP can be used as installed. To use the ZIP CHIP simply turn "ON" your computer. The ZIP CHIP default (automatic) settings are:

System Speed.....4 Mhz.  
Slots Fast.....1,3 and 4  
Paddles.....Normal  
Speaker.....Fast

### STARTUP FAST (4 Mhz)

Startup can be either POWER ON or by pressing the <CTRL> <OPEN APPLE> <RESET> keys.

NOTE: When using the <CTRL> <OPEN APPLE> <RESET> for startup, continue to hold the <OPEN APPLE> key down, after releasing the <CTRL> <RESET> keys, (even if you press the escape key), until a beep is heard from the speaker, (approx. 2 seconds). Once the ZIP CHIP is set to normal speed, it cannot be set to high speed until the next startup, system reset or by custom programs.



## HOW TO RUN YOUR ZIP CHIP AT NORMAL APPLE SPEED:

When you turn "ON" your computer, press the ESCAPE key, the ZIP CHIP will then run at normal Apple speed (1 Mhz.). This is for use with hardware such as some CP/M boards, or software that is unusable at high speed such as arcade type games. The ZIP CHIP delays for 2 seconds after reset or power "ON" to allow you time to press the ESCAPE key. After the 2 seconds the ESCAPE key is ignored by the ZIP CHIP.

## CHAPTER III

### ZIP CHIP UTILITY PROGRAMS

Accompanying your ZIP CHIP there is a disk containing highly useful programs. Side one (1) of the disk contains PRODOS versions, side two (2) contains DOS 3.3 versions. These programs are selected from the "MAIN MENU" described on Page 13.

The programs are:

1. ZIP SYSTEM CHECK used to perform a comprehensive memory test of your Apple II while also checking the performance of your ZIP CHIP.

2. The file INSTALL.ZIP is used to install the system file ZIP.SYSTEM on to any boot disk (floppy disk, hard disk or Ramdisk). This program is located on side one (PRODOS) of the utility disk.
3. ZIP.CONFIG used to configure the ZIP CHIP and allow the user to set each slot to the desired speed.
4. ZIP.HELLO used to boot your Apple DOS 3.3 disks in any you wish (DOS 3.3 side only).

---

MAIN MENU      ZIPCHIP II      1.02

### CONFIGURE INSTALLED

- A) RUN ZIP SYSTEM CHECK
- B) RUN ZIP CONFIGURER
- C) RUN ZIP INSTRUCTIONS
- X) EXIT MENU

WHICH?

---

**\*\* NOTE: Unless you fall into the category mentioned in the "LIST OF HARDWARE CONFIGURATIONS" (Page 2)... YOU DO NOT NEED TO CONFIGURE YOUR ZIP CHIP.**

ZIP CHIP Configure Program - Selecting 'B' causes the following Configuration Menu to display:

CONFIGURER ZIPCHIP II-4 1.00

- A) ZIPCHIP ON
- B) ZIPCHIP SPEED 100%
- C) LANGUAGE CARD CACHED
- D) PADDLE SPEED NORMAL
- E) SPEAKER SPEED FAST
- F) SLOT 1 SPEED FAST
- G) SLOT 2 SPEED NORMAL
- H) SLOT 3 SPEED FAST
- I) SLOT 4 SPEED FAST
- J) SLOT 5 SPEED NORMAL
- K) SLOT 6 SPEED NORMAL
- L) SLOT 7 SPEED NORMAL
- X) EXIT CONFIGURER

OPTION?  
-----

Selecting 'D' through 'L' will cause the speed to toggle from FAST to NORMAL or NORMAL to FAST.

**\*\* WARNING:** If you have an Apple Floppy Disk Drive in Slot 6, changing the speed to FAST may cause damage to the data on the disk.

Selecting 'A' will cause the message to toggle from ON to OFF and the system will run at normal Apple speed. Selecting 'B' will cause one of (19) nineteen possible system speeds to display. The display will step through a speed each time that 'B' is selected.

Selecting 'C' will cause the display to toggle from CACHED to NOT CACHED. NOT CACHED is used only when you have bank switched memory cards in slots other than the Apple auxiliary slot. When you select X, a message will display at the bottom of the screen:

SAVE CONFIGURATION (ESC TO RESUME)?

Press the Escape key to return to the configuration menu or type 'Y' to create the file ZIPCFG on the disk and exit the Configuration Program. Pressing any key other than a 'Y' or the ESCAPE key will set the configuration selected but will not create the file ZIPCFG. A configure once set will remain in effect until the next power "OFF" or <CTRL> <OPEN APPLE> <RESET>.

**\*\* NOTE:** Once a configure is done, the words: CONFIGURE INSTALLED will appear the next time you boot the ZIP Utility disk.

Once a configure is done the file ZIPCFG is created on the disk. If this file, together with the DOS 3.3 file ZIP.HELLO is transferred to another disk, that disk will boot with the configuration you have set. Once transferred, ZIP.HELLO should be renamed HELLO, (DOS 3.3 only).

STARTING UP A WRITE/COPY PROTECTED OR NON STANDARD DOS DISK

Any disk that cannot allow a HELLO or ZIP. SYSTEM program to be written to them fall into this category. These type of programs will run if you do the following:

Set your desired configuration, as described earlier, then exit the ZIP.CONFIG program. You may now insert the desired boot disk and boot the program by typing PR#X (X is the slot number (1-7) where the disk controller card is installed) on the Apple IIc, type "PR#6". Alternatively, you may press the <CTRL> <OPEN APPLE> <RESET> sequence and press the <SPACE> bar before the second reset period expires. The <OPEN APPLE> key must be held in all cases until the beep is heard although the <SPACE> bar was pressed. Pressing the <SPACE> bar during any reset directs the ZIP CHIP not to reset its configuration to the default configuration. All special configurations are lost when the computer is turned "OFF".

## CHAPTER IV - TROUBLESHOOTING GUIDE

If your ZIP CHIP is not performing properly, please do the following.

- 1) ZIP CHIPS have been known to climb out of their sockets. If you computer stops working, TURN OFF THE POWER and reseal the ZIP CHIP by firmly pressing down on both ends and the middle of the ZIP CHIP while it is seated in the socket.
- 2) Sometimes peripheral cards fail. Remove each card separately and try your ZIP CHIP until the offending card is found.
- 3) BARS OR GARBAGE ON SCREEN:  
Wide bars or garbage on screen indicates that the ZIP CHIP is not making good contact in the socket. TURN OFF ALL POWER and remove the ZIP CHIP. Carefully check for bent pins. If you find a bent pin that is not going into a socket hole, it must be straightened. The pins are fragile -- slowly and carefully bend the pin back into position. DO NOT BEND THE PINS BACK AND FORTH...THEY WILL BREAK OFF. The ZIP CHIP is not guaranteed against broken pins.
- 4) If the ZIP CHIP is still not working, then give us a call and we will be happy to assist you.

---

\* NOTE \*

The TECH SUPPORT HOTLINE hours are 9:00 A.M. to 5:00 P.M., Pacific Coast Standard Time, Monday through Friday. The TECH SUPPORT HOTLINE number is (213) 337-1734.

---

## CHAPTER V - RMA PROCEDURE

If for any reason your ZIP CHIP fails to perform please contact ZIP's Tech Support Hotline at (213) 337-1734. If the problem cannot be resolved over the phone and it is determined that the ZIP CHIP is at fault, we will replace it.

Here is ZIP's standard replacement procedure:

- 1) Call ZIP Technology and ask for an RMA number.
- 2) Carefully pack your ZIP CHIP in its original shipping box or a small cardboard box. Please DO NOT use envelopes or jiffy mailers. Return only the ZIP CHIP, keeping your Utility disk, manual and the Chip Removal Tool for use later.
- 3) On the outside of the box write the RMA number in large print. This will ensure a quick response to your RMA.
- 4) Include a copy (photocopy okay) of your invoice or at least a letterhead with your name, phone number and address, a brief description of the problem, and your RMA#.
- 5) Return the ZIP CHIP by **INSURED** mail or UPS. **THIS IS IMPORTANT!** Believe it or not, packages CAN BE LOST in the mail.
- 6) Send your ZIP CHIP to:

ZIP Technology  
5601 W. Slauson Ave., Suite #190  
Culver City, CA. 90230

RMA # \_\_\_\_\_

## CHAPTER VI - ZIP CHIP - CONTROL DATA - CORVUS/OMNINET Compatibility Software Instructions

Prodos version:

- 1) Install the ZIP CHIP into your Apple per its accompanying manual.
- 2) Turn on your computer and press the ESC key within two seconds (before you hear the "beep"). Go into the appropriate and get to a BASIC prompt (or any prompt that will allow running of programs on your floppy drive.
- 3) Type `-/ZIPNET/ZIP.SYSTEM` and press RETURN.
- 4) To find the name of the current directory, position the cursor on the top of the "Check/Run pathnames" option and press RETURN. Press ESC to select another directory. When you are sure of the directory's name, ESC to the directory and place the cursor over the program ZIP.SYSTEM. Now press and, after a second or two, the menu will reappear.
- 5) Select the option "Install Omninet Patch" by positioning the cursor over the option and pressing RETURN.
- 6) When the option "PREFIX:" comes up, enter the correct directory name and press RETURN. After a moment, if the directory is correct, the ZIP.SYSTEM Installer will appear. Select the slot and drive number. It will find the directory and ask you if it is correct. Respond affirmatively. It will then install ZIP.SYSTEM as your first "SYS" file.
- 7) The installer will ask you if you wish to repeat the procedure. Respond negatively. The screen will revert back to the option menu.
- 8) Press the SPACEBAR. The control panel will be shown. Turn ON the autostart facility. Turn the Transporter card slot to FAST. You can now customize your ZIP CHIP if you wish.

- 9) Move the cursor down to the program selector (it should be labeled "none" to start) and press RETURN. A list of files will come up which the ZIP.SYSTEM program can run when finished. Position the cursor over the appropriate one and press RETURN. This will bring you back to the control panel.
- 10) Press <OPEN APPLE>-S. Pressing ESC twice will get you out of ZIP.SYSTEM and into whatever program you decided the selector should choose. Now when you boot up, if you do not press any key used by ZIP.SYSTEM within two seconds of its title screen, the program you selected for it to run will automatically boot up.

Dos 3.3 version:

- 1) Install the ZIP CHIP into your Apple per its accompanying manual.
- 2) Turn on your computer and press the ESC key within two seconds (before you hear the "beep"). Go into the appropriate directory and get to a BASIC prompt (or any prompt that will allow running of programs on your floppy drive).
- 3) Find out the appropriate slot, drive and volume of your current OMNINET directory.
- 4) Type RUN HELLO,S#,D# (where # represents the floppy disk Slot number and Drive number respectively) followed by the RETURN key. Follow the instructions to install the Compatibility Software and ZIPCFG program.
- 5) When you are finished installing the Compatibility Software, return to a BASIC prompt. Type RUN ZIP.CONFIG,S#,D#,V# (where # represents the hard disk Slot number, Drive number and Volume number respectively) followed by the RETURN key. Select the OMNINET slot (and any other appropriate slots) to FAST. You can now customize your ZIP CHIP if you wish. Press X to exit and press Y to confirm resaving ZIPCFG (Zip configuration file).

- 6) The ZIP CHIP Compatibility Software is now installed. If you wish to change any configuration on ZIPCFG, just run the ZIP.CONFIG program once again. The Compatibility Software will install automatically every time you boot from that directory.

#### NEED ASSISTANCE?

If you experience any problems in implementing ZIP's CONTROL DATA CORVUS/OMNINET compatibility software, please call Technical Support at ZIP Technology. Their number is (213) 337-1734, and they are at your service between the hours of 9:00 AM to 5:00 PM Pacific time. A professional staff member will be available to service your call.

REGISTRATION FORM

To insure warranty registration and information on new products,  
please fill out and return this form to:

ZIP Technology, 5601 W. Slauson Ave. Ste. # 190  
Los Angeles, CA. 90230

Name \_\_\_\_\_

Company \_\_\_\_\_

Address \_\_\_\_\_

City \_\_\_\_\_ State \_\_\_\_\_ Zip \_\_\_\_\_

Telephone Number ( \_\_\_\_ ) \_\_\_\_\_ - \_\_\_\_\_

I Purchased the ZIP CHIP from:

Name \_\_\_\_\_

Company \_\_\_\_\_

Address \_\_\_\_\_

City \_\_\_\_\_ State \_\_\_\_\_ Zip \_\_\_\_\_

Telephone Number ( \_\_\_\_ ) \_\_\_\_\_ - \_\_\_\_\_

Date Purchased \_\_\_\_\_ / \_\_\_\_\_ / \_\_\_\_\_

I heard about the ZIP CHIP from:

Magazine Ad. ( Please Specify ) \_\_\_\_\_

Direct Mail.

Users Group ( Please Specify ) \_\_\_\_\_

Computer Show.

Friend.