

# TypeSet™

## Font

Avant Garde

Berling Agency

Bookman

*Carolina Brush*

Courier

Diamond

*Dianna Script*

Formula One

Franklin Gothic

Goudy

*Mistral Graff*

Planet



Tools to  
help you  
work  
smarter  
with fonts





# TypeSet

## User's Manual

Tools to help you  
work smarter with fonts

By Steve Disbrow

and Joe Wankerl

**WestCode Software, Inc.**

15050 Avenue of Science, Suite 112  
San Diego, California 92128  
(619) 487-9200 • (619) 487-9255 Fax  
(619) 487-9233 Technical Support



## CREDITS

### SOFTWARE DEVELOPMENT

Steve Disbrow and Joe Wankerl

### SOFTWARE DESIGN

WestCode Software, Inc.

### PACKAGE AND COVER DESIGN

Rob Renstrom

### USER'S MANUAL

Tony Gentile, Rob Renstrom and

Steve Disbrow

### PROJECT MANAGER

Tony Gentile

## SPECIAL THANKS

Sarah A., Alan Bird, Kim Brennan, Tabitha Burton, Brent Dennison, Noreen Disbrow, Ira Garvin, Jimi H., Anita N. Hill, Dianna H., Scott Jelsma, Jeff Jungblut, Traci L., Alissa M., John O., Andrew Polk, Rob R., Chris Vavruska.

## TRADEMARKS

Apple, Apple IIGs, GS/OS, TrueType, and Finder are trademarks and registered trademarks of Apple Computer, Inc.

AppleWorks GS is a registered trademark of Claris Corporation.

TypeSet, Pointless, TypeWest and the WestCode Software logo are trademarks of WestCode Software, Inc.

All other brand and product names are trademarks of their respective companies.

## COPYRIGHT

© 1993 WestCode Software, Inc.

This program contains materials from the ORCA/C Run-Time Libraries, Copyright 1987-1989 by Byte Works, Inc. Used with permission.

RESMAKER Copyright © 1990-1993 Vitesse, Inc.

All rights reserved. This manual and the software described in it are copyrighted, with all rights reserved. Under the copyright laws, this manual or the software may not be copied, in whole or part, without written consent of WestCode Software, except in the normal use of the software or to make a backup copy of the software. This exception does not allow copies to be made for others. Under the law, copying includes translation into another language or format.

0987654321

Printed in the United States of America.



# Contents

<b>1</b>	<b>Introduction .....</b>	<b>1</b>
	Welcome to TypeSet .....	1
	What TypeSet Can Do For You .....	1
	WYSIWYG: Making the Font Menu Informative .....	2
	Sets: Managing the Font Menu .....	2
	Reports: Documenting Your TrueType Font Collection .....	3
	About this Manual .....	3
	Do You Know the Basics? .....	3
	System Requirements .....	4
	Registration .....	4
	Copy Protection .....	4
	Customer Support .....	5
<b>2</b>	<b>Installing TypeSet .....</b>	<b>7</b>
	The TypeSet Disk .....	7
	Installing TypeSet .....	8
	Making Room on the System Disk .....	8
	Using the Installer Program .....	10
	Activating TypeSet .....	12
<b>3</b>	<b>Font Sets .....</b>	<b>13</b>
	Exploring TypeSet .....	13
	The Set Selector Menu .....	14
	The Font List .....	14
	New set (Command-N) .....	14
	Remove set (Command-R) .....	15
	Add (Command-A) .....	15
	Selecting Fonts .....	16
	Delete (Command-D) .....	16
	Reports... (Return) .....	17

Settings... (Command-S) .....	17
Display Set Change Message (Command-D) .....	17
Use WYSIWYG Font Menu (Command-U) .....	17
Key Equivalent .....	18
TypeSet In Action .....	18
Example 1 – Creating a New Set .....	19
Example 2 – Modifying a Duplicate Set .....	21
Making the Most of Sets .....	22

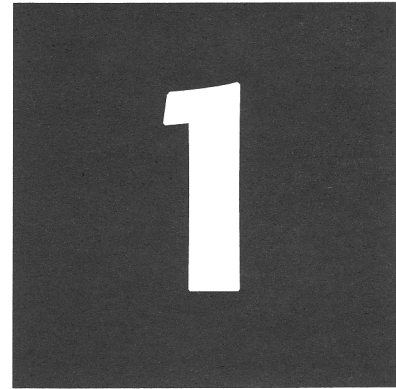
## **4 Reports ..... 23**

The Value of Font Reports .....	23
Generating Reports .....	23
The Font List .....	24
Reports Options .....	24
Report Preferences (Command-P) .....	26
Choose Font to Use For Headings (Command-Y) .....	26
Specify Page Setup (Command-S) .....	27
Sample Text .....	27
Example 1 – Several Fonts, Several Reports .....	28
Example 2 – Line Samples .....	29
Example 3 – Print Them Out! .....	30
Information On Font (Control-I) .....	31
An Informative Example .....	31

## **A Trouble-shooting ..... 33**

Questions and Answers .....	33
Disabling TypeSet at Startup .....	35

# Introduction



## Welcome to TypeSet

With the popularity of WestCode Software's Pointless™ program, TrueType fonts have become a hot item in the Apple IIGS world. It's not uncommon for some IIGS owners to have dozens, or even hundreds of these fonts installed in their systems!

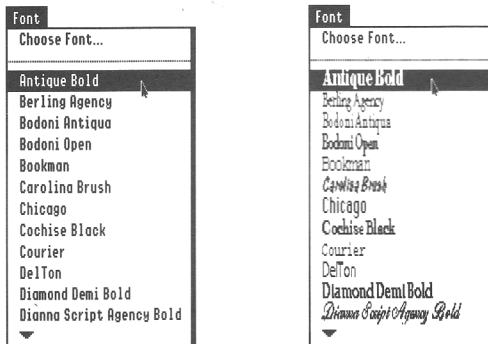
TypeSet™ is a high-powered, three-part productivity package which will allow you to take control of your TrueType fonts. As a New Desk Accessory (NDA), TypeSet automatically loads when your system starts up. Once installed, it operates behind the scenes, so you'll continue to work with your IIGS programs as you always have.

## What TypeSet Can Do For You

- Create a *WYSIWYG Font menu*, enabling your IIGS desktop applications to display the name of each TrueType font in its own typeface inside the Font menu.
- Build *font sets*, allowing you to control which TrueType fonts appear in the Font menu.
- Generate *reports*, allowing you to see what a particular font will look like on paper, including symbols and international characters.

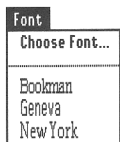
## WYSIWYG: Making the Font Menu Informative

The first and most dramatic feature of TypeSet is its ability to turn a plain, uninformative Font menu into one which displays each font name in its own typeface, allowing you to pick the font you need at a glance.



With the What-You-See-Is-What-You-Get (WYSIWYG) Font menu feature of TypeSet, you'll never have to try to remember what a font looks like again!

## Sets: Managing the Font Menu



TypeSet also allows you to create custom sets of fonts that make the Font menu easier to navigate. For example, if you were working on a project which only required three fonts, it would be far easier to select a font from a Font menu that looked like the one to the left.

You can create as many different sets as you need, and each set can contain any number of fonts. Best of all, whenever you switch sets, TypeSet will dynamically change the Font menu so only the TrueType fonts in the active set are shown! And, if you need to get at a font that isn't in the active set, but you don't want to switch sets, all of your fonts will still be available from the application's Choose Font menu item.

## Reports: Documenting Your TrueType Font Collection

TypeSet also provides the ability to generate reports that allow you to see your TrueType fonts in a variety of formats. The four customizable layouts are:

- **All Characters:** this report shows all of the characters in a font.
- **Key Equivalents:** this report shows the keys which you would need to press to type each of the characters in a font.
- **Line Samples:** this report shows up to ten different fonts on the same page. It also includes the disk location of the font, so that you can create a catalog of your fonts.
- **Various Sizes:** this report shows the font of your choice at sizes ranging from 8 pt. to 48 pt.

The reports generated by TypeSet can be sent to either the printer or the screen.

## About this Manual

This manual is a complete guide to understanding and using TypeSet. Reading it from cover to cover will provide you with all of the information you need to make the most of TypeSet.

We strongly suggest that you read this manual before using TypeSet. However, if you are anxious to get started, please read the instructions in Chapter 2, "Installing TypeSet".

## Do You Know the Basics?

This manual assumes that you are comfortable working with your computer and know how to select menu items, open files, click on buttons and so forth. If terms such as *double-click*, *icons* and *System Software* are new to you, please refer to the manuals that came with your computer.

## System Requirements

TypeSet requires:

- An Apple IIGS with a minimum of 1.25 megabytes (1280K) of RAM
- Apple IIGS System Software 5.0.4 or later (including System 6.0)
- Pointless 2.0 or later

Optional equipment:

- If you are working with System 6 or lots of TrueType fonts, we strongly recommend that you have a hard drive and additional RAM.
- An accelerator card will enhance the performance of TypeSet, Pointless and all of your other IIGS software.

## Registration

Please take a moment now to complete the Registration Card included with this package. Registration will allow us to notify you of product improvements and to tell you about new products. It only takes a few minutes to fill out and mail the card, so please do it now.

Remember, product support is available only to registered users.

## Copy Protection

Like all WestCode Software products, TypeSet is not copy-protected. We do this for two reasons. The first reason is that copy-protection is cumbersome and troublesome – something we try to eliminate for our valued customers. The second reason is that we believe our customers are honest people. Please help us to keep our faith in you by not making copies of this software for others. They should purchase it, just as you did.

## Customer Support

At WestCode Software our company “mission” is to create outstanding, innovative products that are easy to use and a good value. This package reflects our dedication to producing well-designed software combined with comprehensive user documentation to help you get the most from your purchase.

We want you to be completely satisfied with our products and service. If you ever have a question or problem with one of our products, and you can't find an answer in the manual, call us for a quick solution. Our knowledgeable technical support staff is available to help you from 10:00 A.M. to 5:00 P.M. Pacific time, Monday through Friday.

(619) 487-9233 Technical questions about products

(619) 487-9200 General information and sales

(619) 487-9255 Fax

Or write to: WestCode Software, Inc.  
Attn: Technical Support  
15050 Avenue of Science, Suite 112  
San Diego, CA 92128

When calling, you should be at your computer, have this manual handy, and be prepared to give the following information:

- The Product Registration number on the inside front cover of this manual
- Your hardware setup (computer type, memory, and so on)
- The version of your System Software
- A description of the problem

Modem users can also receive product support on America Online (keyword: APR) and GENie (A2 bulletin board). Send e-mail to: WestCode.

## Customer Comments

We're always looking for ways to improve our products and frequently add new features requested by our customers. We welcome and encourage your comments for making our products and service even better. We're also interested in ideas for new products that you'd like to see produced.

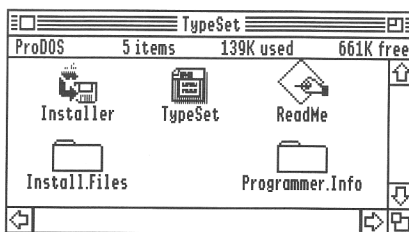


# Installing TypeSet

## 2

### The TypeSet Disk

TypeSet is supplied on a single 800K disk. Included on the disk is an easy-to-use Install program, the TypeSet software and a file containing release notes.



Also on the disk is the **Install.Files** folder, which contains files needed during the installation process and the **Programmer.Info** folder, which contains files for programmers interested in creating NDAs which can take advantage of TypeSet's features.

## Installing TypeSet

The **Installer** program will automatically copy all of the necessary files from the TypeSet disk to your System startup disk.

Before installing TypeSet, double-click the **ReadMe** file to read about any changes which have been made to the program since the printing of this manual.

You must have at least 52K of free disk space on your System startup disk in order to install TypeSet. This should not be a problem if you are using a hard drive or other type of high-capacity disk drive. Skip ahead to the “Using the Installer Program” section in this chapter if you have enough space on your System Disk.

## Making Room on the System Disk

If you do not have enough space available, you will need to delete some unnecessary files from your System Disk. Since you'll be modifying your System Disk, it's a good idea to make a copy of it before continuing.

Start up your computer with the copy of the System Disk, then delete the following files to make enough space to install TypeSet. The files and folders listed here are non-essential items typically found on the IIGS System Disk. It's unlikely that you'll need to delete all of these files, so start at the beginning of the list and remove only the necessary items, until 52K of space is available.



## System Files That You Can Delete

File/Folder	Explanation
Tutorial	This folder contains files that you probably no longer need. Remove the entire folder from your disk.
BASIC.System and BASIC.Launcher	These two files can be deleted if you don't plan to run BASIC programs while using this particular System Disk. (You can always boot BASIC programs with another System Disk.)
System:Fonts	Many of the bit-mapped fonts in this folder are expendable since Pointless includes TrueType versions of the same typefaces. (Don't delete the TrueType fonts.)
System:Desk.Accs	The only essential file in this folder is <b>CtlPanel.NDA</b> .
System:CDevs	You can remove many of the Control Panel files, however, you will lose the ability to access the functions or options that they provide (many of these CDevs duplicate functions available from the text-based control panel). Do not delete the <b>DirectConnect</b> or <b>Pointless</b> files.
System:System.Setup	If you have a ROM 01 computer, you may delete the <b>TS3</b> file. If you have a ROM 03 computer, you may delete the <b>TS2</b> file. If you are not sure which ROM version you have, simply restart. The ROM version of your computer will be displayed at the bottom of the screen.

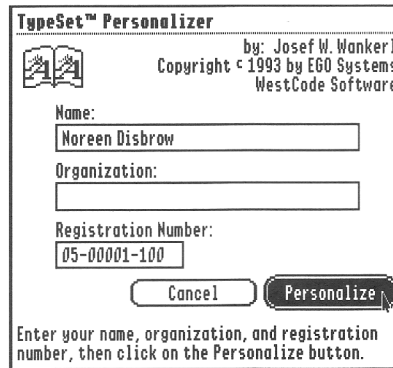
### Note

To delete a file from the Finder, drag it to the trash, then select the **Empty Trash** option from the **Special** pull-down menu. Remember to check the amount of free disk space after deleting each item.

## Using the Installer Program

The TypeSet disk itself is not a bootable disk. In order to install TypeSet, it will be necessary for you to boot from a hard disk or an Apple IIGS System Disk.

- 1 Run the Installer program on the TypeSet disk by double-clicking the **Installer** icon.



**TypeSet™ Personalizer**

by: Josef W. Wankerl  
Copyright © 1993 by EGO Systems  
WestCode Software

Name:  
Noreen Disbrow

Organization:

Registration Number:  
05-00001-100

Cancel Personalize

Enter your name, organization, and registration number, then click on the Personalize button.

You will need to personalize your original TypeSet disk before installation is possible.

- 2 After the personalization window appears, enter your name on the first line, then press the Tab key to move the cursor to the second line where you may enter your organization's name (if any).
- 3 Then, press the Tab key again and enter your TypeSet registration number, which can be found on the inside front cover of this manual.

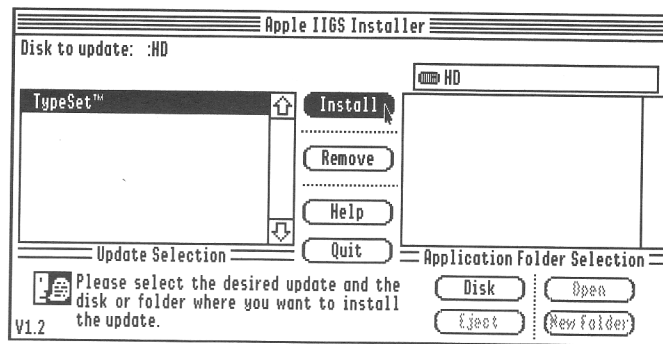
- 4 When finished, click the **Personalize** button to complete the personalization procedure.

**Note**

**Remember that TypeSet is licensed for use on a single computer.**

If you plan to use TypeSet on a network or on several computers, contact WestCode Software to obtain an affordable network or site license.

After personalizing your TypeSet disk, the Apple IIGS Installer window will appear.



- 5 If the upper left corner of the window doesn't show your startup disk's name, click the **Disk** button until your startup disk's name appears.

The box at the left indicates the only Installer choice with **TypeSet™** highlighted.

- 6 Click the **Install** button to install TypeSet.

If the Installer reports that the installation was successful, TypeSet is now on your Apple IIGS System startup disk.

## Activating TypeSet

After you have successfully installed TypeSet, the Installer program will display a message at the bottom of the screen, stating that “An update has altered system files on the startup disk.”

To restart and activate TypeSet, click the **Quit** button, then click the **Restart System** button. TypeSet will load automatically during the GS/OS startup.



When the system restarts, you should see the TypeSet icon at the bottom of the screen, verifying that TypeSet is loaded and ready to use; the TypeSet icon will not display if you are using System 5. (Again, it is important to note that the Pointless icon should show up before the TypeSet icon in order for TypeSet to work properly.)

## Files Copied by the Installer

If you're interested in knowing what the Installer did, it copied the TypeSet software into a folder within the **System** folder on your System Disk. The following table summarizes which files were placed in the folder, with a brief description of each file.

File	Folder	What it's for
TypeSet	Desk.Accs	The TypeSet NDA performs the actual font set management and reporting, and enables your application software to display a WYSIWYG Font menu.
TypeSet.Prefs	Desk.Accs	This file is not copied by the installer, but is created the first time you use TypeSet.

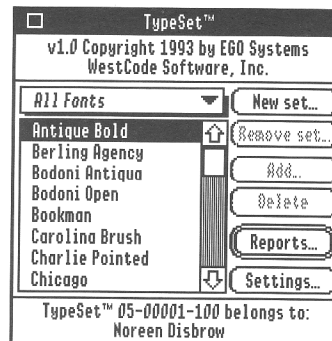
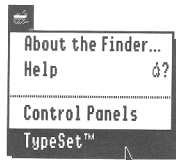
# Font Sets



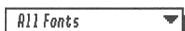
## Exploring TypeSet

With TypeSet installed, launch your favorite GS/OS word processor, such as AppleWorks GS, and create a new word processing document. (Note that like Pointless, TypeSet works under the GS/OS System Software. Older, 8-bit software, like AppleWorks Classic, is not supported.)

Next, select **TypeSet** from the **Apple** menu. The TypeSet window will appear.



## The Set Selector Menu



At the top of the TypeSet window is the Set Selector *pop-up* menu, which contains the names of all available font sets. To choose a set, simply select it from this menu. When you choose a new set from this menu, TypeSet will dynamically rebuild the Font menu in the currently active application with only the fonts in the active set.

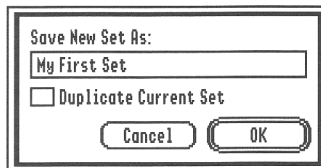
When TypeSet is first installed, only one set will be available: the **All Fonts** set. This set contains all of the TrueType fonts that you have installed in your system with Pointless. The **All Fonts** set cannot be modified or removed, except by adding or removing fonts from within Pointless; see the Pointless documentation for details.

## The Font List

Below the Set Selector pop-up menu is a list showing all of the fonts that are included in the active set. The font list will be updated when you select a different set.

## New set (Command-N)

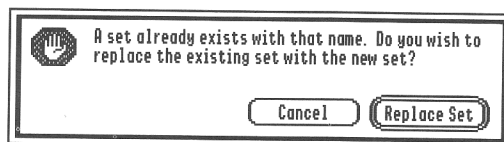
The **New set** button creates a new font set for you to work with. When you click this button, you will be asked to type in the name for a new font set. (Set names can be up to 25 characters long.) If you want to copy the contents of the current font set into the new set simply click the **Duplicate Current Set** check box.



When you click the **OK** button, TypeSet will create the new set and rebuild the application's Font menu accordingly.



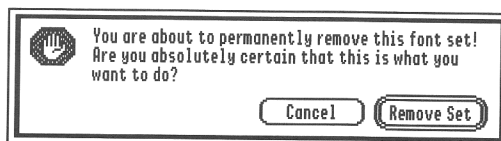
If you enter the name of a set that already exists, the following dialog will appear.



You will be given the choice of either replacing the old set with the new one, or canceling so that you may enter another name.

### Remove set (Command-R)

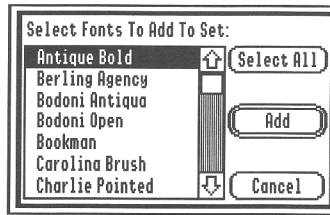
The **Remove set** button deletes the active font set. You will be warned that you are about to delete the active set and will be given a chance to cancel.



If you choose to delete the set, TypeSet will remove the set and switch to the **All Fonts** set, rebuilding the application's Font menu accordingly.

### Add (Command-A)

The **Add** button allows you to add fonts to the active set. When you choose this option, you will be asked to select the fonts you want to add. Any fonts that are already in the active set will be dimmed so that you can not select them again.



## Selecting Fonts

There are several commands that you may use to select fonts:

- To select a single font, simply double-click on the font name.
- You can select more than one font by holding down the *Command* key while clicking on each of the fonts that you want to add.
- You can select a continuous group of fonts by clicking on the first font in the group, then holding down the *Shift* key while clicking on the last font in the group.
- If you want to select all of the fonts, click the **Select All** button.

After you have selected the fonts that you want to add, click the **Add** button or press the Return key. TypeSet will dynamically rebuild the Font menu of the current application.

## Delete (Command-D)

The **Delete** button allows you to delete fonts from the active set; the fonts will *not* be physically deleted from your disk. To delete a font, simply click on the font name and then click the **Delete** button. You can delete several fonts at once by using the *Command* and *Shift* keys as described above in the **Selecting Fonts** section.

### Note

---

**When you click on the Delete button, there is no confirmation.** The fonts are simply deleted. If you delete a font by mistake, simply add it again by clicking on the **Add** button.

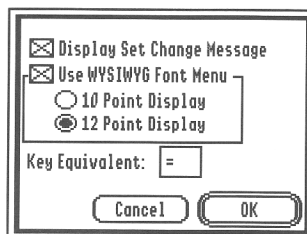
---

## Reports... (Return)

This option lets you generate reports based on the fonts in the active set. For more on generating reports, see the “Reports” chapter, later in this manual.

## Settings... (Command-S)

This option lets you control various aspects of how TypeSet works.

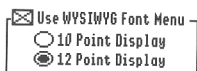


### Display Set Change Message (Command-D)

When you change sets, or alter a set by adding or deleting fonts, TypeSet dynamically rebuilds the active application's Font menu. The **Display Set Change Message** check box allows you to tell TypeSet if you want it to remind you of this fact. If the check box is checked, TypeSet will automatically remind you that your Font menu will be changed.

### Use WYSIWYG Font Menu (Command-U)

“WYSIWYG” stands for “What You See Is What You Get”. When the **Use WYSIWYG Font Menu** check box is checked, TypeSet will change the Font menu in your applications so that TrueType fonts will be displayed in their own typeface; your bit-mapped fonts will still be displayed in the regular System font (Shaston).



After selecting the check box, you'll be given the option of specifying the point size used to display the fonts. The two choices are: **10 Point Display** (Command-1) and **12 Point Display** (Command-2).

If you use 12 point, the names of your fonts will be easier to read, but some font names may overwrite each other. Choosing 10 point will avoid this problem, but it may make the names of some fonts difficult to read. Choose the setting which works best for the fonts installed on your system.

### Key Equivalent

This option allows you to assign a key equivalent which can be used to open the TypeSet NDA window by holding down the *Command* key and pressing the key entered here. This option will not take effect until the next time you open an application or restart your computer.

---

**Warning** Each application has its own set of **Command key equivalents**. Be careful to choose a key that most applications don't use! A good choice is the equal "=" key.

---

## TypeSet In Action

Now that the various options for creating and modifying sets have been explained, let's look at some real examples of how to create and use sets.

---

**Note** These examples assume that you are in AppleWorks GS with a Word Processing document open; however, any GS/OS word processor should work.

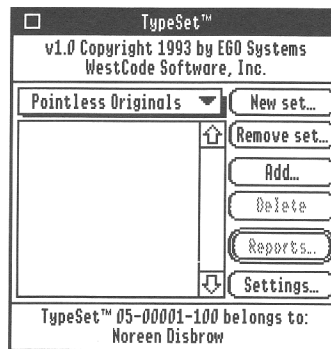
---

## Example 1 – Creating a New Set

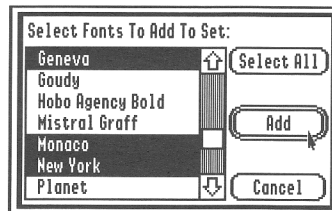
This example demonstrates how to create a font set and add fonts to a set.

- 1 Select **TypeSet** from the **Apple** menu.
- 2 Click the **New set** button, and enter “Pointless Originals” as the new set name, then click the **OK** button.

The TypeSet window will indicate that **Pointless Originals** is the active set and will display an empty font list.



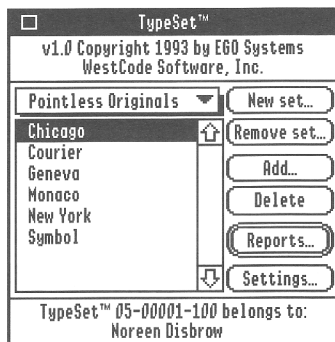
- 3 Click the **Add** button. Now, select the fonts which originally came with Pointless. They are: **Chicago**, **Courier**, **Geneva**, **Monaco**, **New York** and **Symbol**.



To select these fonts, hold down the *Command* key and click each of the font names. You may have to use the scroll bar to move down through the list of fonts — just remember to hold down the *Command* key when you click each font name.

When you have selected all of the fonts, press the Return key to add them to the set.

After the fonts have been added, the TypeSet window will look like this:



- 4 Finally, click on the word processor document window and pull down the **Font** menu in your word processor. (You did open a new word processing document, didn't you?)

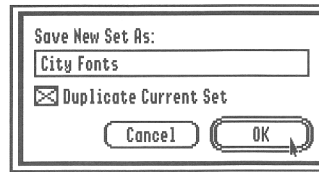


Notice that the fonts in the **Pointless Originals** set have been added to the Font menu and that their names are all displayed in their respective typefaces! (It may take a little time for the Font menu to be drawn the first time; see “Appendix A” for information on how to speed up the WYSIWYG option.)

## Example 2 – Modifying a Duplicate Set

This example will demonstrate how to duplicate the active set, remove fonts, and dynamically rebuild the Font menu by switching sets.

- 1 Select **TypeSet** from the **Apple** menu. Use the Set Selector pop-up to change the active set to **Pointless Originals**, if it's not already selected.
- 2 Click the **New set** button, then check the **Duplicate Current Set** check box. Next, enter "City Fonts" as the set name and click the **OK** button.



You will now have a new set, named **City Fonts** which contains the same fonts as in the **Pointless Originals** set that you created in the previous example.

- 3 Command-click the **Symbol** and **Courier** fonts, then click the **Delete** button. The **Symbol** and **Courier** fonts will both be removed from the font list.

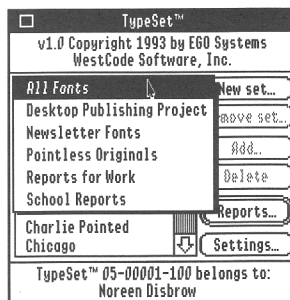


- 4 Click on the word processor document window and pull down the **Font** menu. The menu will now display the fonts in the **City Fonts** set.
- 5 Select TypeSet from the **Apple** menu and use the Set Selector pop-up to switch back to the **Pointless Originals** set. Click on the word processor document window and pull down the **Font** menu. Notice that the menu has dynamically changed to display the fonts in the **Pointless Originals** set.

## Making the Most of Sets

Now that you know how to create, modify and remove font sets, one burning question probably remains in your mind, “How exactly do I *use* sets?”

The best use of font sets depends on how you work with fonts. If you find that you commonly use three or four specific fonts, build a set just for them. Selecting your fonts from a small Font menu will be quicker and easier, especially if you take advantage of TypeSet’s WYSIWYG Font menu option.



If you find that you use specific fonts with specific applications, or use different fonts for different projects, create a set for each of your different jobs. And, if several people use your IIGS, you can create sets for each of them. You may have as many sets as you desire.



# Reports

## 4

### The Value of Font Reports

Being able to see what your fonts look like in the Font menu is great, but it still doesn't give you a complete picture of what your fonts will look like on paper. For that reason, TypeSet has extensive reporting capabilities that allow you to generate reports for any of your TrueType fonts. You can send these reports to either the screen or printer.

### Generating Reports

To access TypeSet's reporting options, choose **TypeSet** from the **Apple** menu, then, from the TypeSet window, click the **Reports** button.

To set-up a report, you must:

- Select the font(s) you wish to include in the report from the Font List
- Choose the report(s) to generate
- Specify where to direct the report(s)

Once you have set-up the report, click the **Report** button; the report will then be displayed on the screen or sent to the printer.

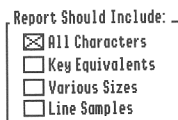
## The Font List

The reports dialog box shows a list of the fonts in the active set, along with any stylistic variations of these fonts that may have been “hidden” in the set list. For example, if you have the **Courier** font family in a set, **Courier (Bold)** would not show up in the set list; however, it will show up in the reports dialog box.



To select the fonts that you want to create reports for, you can use the same *Shift* and *Command* key techniques discussed previously in **Selecting Fonts** (see page 16).

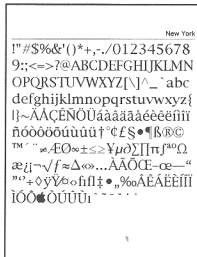
## Reports Options



The reports dialog box also contains several settings which allow you to select which reports you want, and where you want them to be sent. Below the **Report Should Include** heading are four check boxes that represent the different kinds of reports that TypeSet can generate. To include a specific report, simply select its check box.

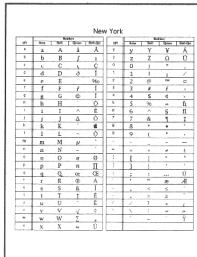
Below the **Send To** heading are options that allow you to tell TypeSet where you want reports to go: **Screen** (Command-1) or **Printer** (Command-2)

The four report designs (and their command key equivalents) are as follows:



## All Characters (Command-A)

This report shows all of the characters in a font at 40 pt. size. This large size allows you to see the subtle details of the font's characters.



## Key Equivalents (Command-K)

The Key Equivalents report shows all of the characters in a font, and the keys which you would need to press to type them.



## Various Sizes (Command-V)

This report shows the font of your choice at sizes ranging from 8 pt. to 48 pt. It also shows a user-definable message of up to 255 characters.

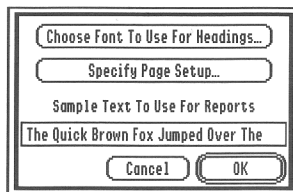


## Line Samples (Command-L)

The Line Samples report shows several different fonts on the same page. It also includes the disk location of the font, so that you can create a catalog of your fonts.

## Report Preferences (Command-P)

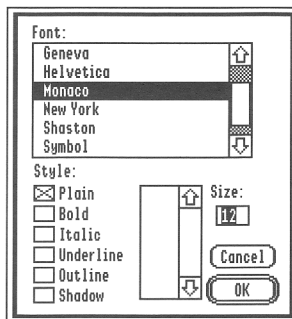
The **Preferences** option lets you configure various settings report settings. (TypeSet stores these settings in the **TypeSet.Prefs** file in your **System:Desk.Accs** folder so that you don't have to set them each time you generate reports.)



After you have changed the preference options, press the Return key to save the new settings and go back to the reports dialog box. Or, click the **Cancel** button to leave your preferences the way they were.

## Choose Font to Use For Headings (Command-Y)

When you select this option, a standard Choose Font dialog will be displayed, allowing you to select a font, size, and style to use for report headings. By default, TypeSet uses 20 point, plain Geneva for headings – but you can specify any font you wish.

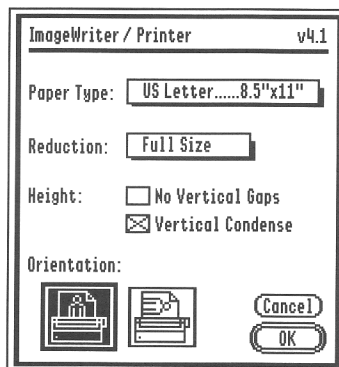


**Note**

While you can specify any font and style you wish, TypeSet internally limits the size to 20 points or less for headings (so that the reports won't run off the page).

**Specify Page Setup (Command-S)**

This option displays a Page Setup dialog, which allows you to select the paper size you will be printing on. Note that the TypeSet reports are set-up to print on paper that is at least 8 inches wide and 10 inches tall, so make sure the page setup you select is at least that large.

**Note**

It is very important that you change the page setup so that your printout will be "condensed" vertically. If you do not, your printouts will appear "stretched out" and will run off the bottom of the page. If you are using the standard Apple-supplied ImageWriter driver, select the **Vertical Condense** option. If you are using a third-party printer driver, consult the driver's manual for information on setting the correct vertical aspect.

**Sample Text**

This preference option lets you specify a line of sample text, up to 255 characters, which will show up at the bottom of the **Various Sizes** report in several different sizes.

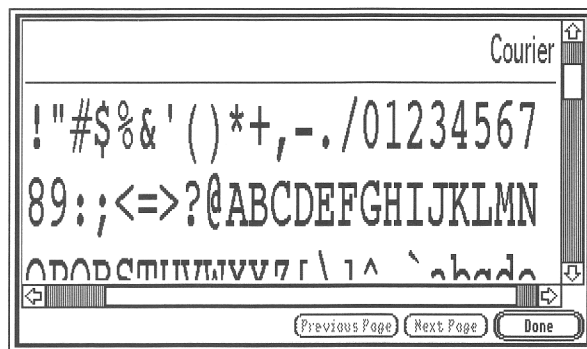
## Example 1 – Several Fonts, Several Reports

This example will demonstrate how to generate a report to screen and how to move from page to page in a multi-page report.

### Note

Before you begin working through these examples, make sure your page setup and other reports preferences are set the way you want them. Also, you will need to be in 640 screen mode to generate reports. The Finder is an example of a 640 mode application.

- 1 From the reports dialog box, select the following three fonts: **Courier**, **Geneva**, and **Monaco**.
- 2 Next, select the following three reports: **All Characters**, **Key Equivalents**, and **Various Sizes**.
- 3 Click the **Report** button.



The report window contains two scroll bars which you can use to move around the report page. The **Previous Page** (Command-**<**) and **Next Page** (Command-**>**) buttons allow you to move from page to page in a multi-page report. The **Done** button allows you to exit and return to the reports dialog box.

- 4 After the first page appears, you can move through the pages using the **Next Page** button. Note that the vertical scroll bar will allow you to move around the current report page, but will not allow you to move between pages.

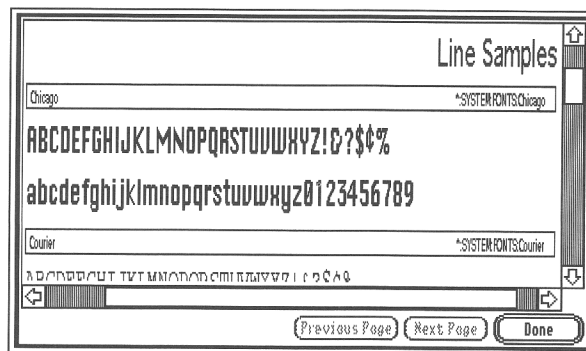
Also, notice that the first three pages of the report are for the **Courier** font, the next three pages are for the **Geneva** font and the final three pages are for **Monaco**. This is because TypeSet always generates all of the requested report types for a single font before moving on to the next font.

When you are done looking at these pages, click the **Done** button to return to the reports dialog box.

## Example 2 – Line Samples

This example will demonstrate how to create a Line Sample report.

- 1 From the reports dialog box, select all of the fonts in the **Pointless Originals** set. Then, select the **Line Samples** report – make sure the check boxes for the other report types are unmarked.
- 2 Next, click the **Report** button.



- 3 Use the scroll bars to move around the page. Notice that in addition to the font name, the Line Samples report also supplies the location of the font – this makes it ideal for building a catalog of your fonts!

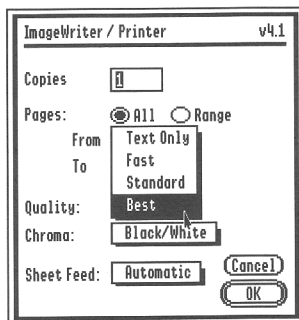
When you are done looking at these pages, click the **Done** button.

### Example 3 – Print Them Out!

For our last example, you can take any of the previous examples and direct the reports to the printer.



- 1 Click the **Printer** button, then click the **Report** button. (Make sure your printer is ready first.) A standard print dialog box will appear.



- 2 From the print dialog, select the print quality, then click the **OK** button to begin printing. You may press Command-period (Command-.) to cancel printing at any time.



## Information On Font (Control-I)

TypeSet can also give you additional information about fonts, including: the name of the font, how much space is used by the font file, the font's family number, the styles assigned to the font, and the location of the font on disk.

### An Informative Example

Let's use the **Information On Font** option to see if we can understand why the **Courier (Bold)** font is not visible in the Font menu.

- 1 Go to the main TypeSet window, select the **All Fonts** set and click the **Reports** button.

In the reports dialog box, notice that the **Courier (Bold)** font is in the list (assuming, of course, that you have it installed).

- 2 Click the **Courier** font and then click the **Information On Font** button. The following dialog box will appear:

Courier	
Size On Disk	114422 Bytes (111K)
Font Family Number	22
Styles Applied To Font	Plain
Font File Name/Location	*:SYSTEM:FONTS:Courier
OK	

Notice that the family number for this font is **22** and that its style is **Plain**.

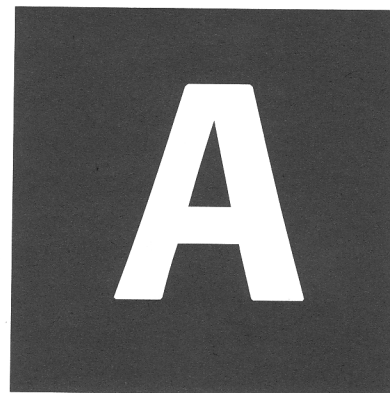
Click the **OK** button or press the Return key to remove the information dialog box.

**3** Now, select the **Courier (Bold)** font and press Command-I.

When the new dialog box appears, notice that the family number of the **Courier (Bold)** font is also **22** but that it has the **Bold** style assigned to it. Since both fonts have the same family number, Pointless and TypeSet “hide” the bold font in the Font menu and only show the family name: Courier. This reduces the number of fonts in the Font menu, making it easier to read and navigate. You can, of course, access the stylized versions of the fonts from your application’s **Style** menu.

At some point while you’re using the **Information On Font** feature, you may come across a font whose name includes a font style (such as the **Dianna Script Agency Bold** font in WestCode’s TypeWest™ font collection) but which is reported as being Plain. This is not a faulty report by TypeSet. Instead, it indicates that the font in question is not a member of a font family, but is instead a unique font, with no other styles.

# Trouble-shooting



## Questions and Answers

### **“How can I speed up the WYSIWYG Font menu?”**

The best way to speed up the WYSIWYG Font menu is to use Pointless to generate bit-mapped fonts in the size that TypeSet will display the fonts in the menu. In other words, if you are using the 12-point display option, use Pointless to create a 12-point bit-mapped font file for each of your TrueType fonts. For more information on creating and using bit-mapped fonts with Pointless, consult your Pointless User's Manual.

### **“Why do my reports look stretched out or run over a page?”**

You forgot to select the “Vertical condense” check box on the **Page Setup** dialog box from the TypeSet Report Preferences Page Setup option. Also, be sure that you are selecting the “Best” or highest resolution (DPI) when you print the reports.

### **“How many reports can I generate at once?”**

The number of reports that you can generate depends on the amount of RAM that is installed in your system. If your system starts to run low on memory, the reports will begin to print out slower. Please note however that TypeSet does have checks built into it to prevent it from completely running out of memory.

**“Why doesn’t the WYSIWYG option work with GraphicWriter III?”**

GraphicWriter™ III v1.1 uses a “custom” Font menu, which does not support the changes to the System made by TypeSet in order to create a WYSIWYG Font menu. Future versions of GraphicWriter will have a standard Font menu, and will support TypeSet.

**“Why does a message appear when I open TypeSet while running The Manager?”**

Unfortunately, TypeSet is not 100% compatible with The Manager™ 1.1 or earlier – if you are working with a later version of The Manager, the incompatibility may have already been solved. TypeSet will work if you open it while inside an application which has a Font menu, such as AppleWorks GS. However, if you open it while only The Manager and Finder are running, or after you have quit out of an application which had a Font menu, you may experience a system crash.

**“Why don’t my bit-mapped fonts appear in their own typeface?”**

TypeSet is designed to work with TrueType fonts and Pointless.

**“Why does TypeSet generate several spool files with Express?”**

Because of limitations in the font, memory and print managers, TypeSet divides large report jobs into smaller three page jobs.

**“Why doesn’t TypeSet work with NDA editors?”**

Since the IIGS was not meant to have more than one Font menu active at a time, the authors of NDA text editors have to create their own “custom” Font menus, which are usually created in such a way that TypeSet can not interact with them. However, we are making information available to software authors so that they can create “TypeSet savvy” programs.

### “Any other potential problems I should know about?”

Just one. If you want to use Pointless to remove a TrueType font from your system, make sure that you do it in an application that does not have a Font menu (such as the Finder), and make sure that the TypeSet is closed. If you don't take these simple precautions, the removed font will still appear in the Font menu and the next time you try to choose it, your system will crash.

The reason for this is that, as of this writing, TypeSet has no way of automatically knowing when Pointless has removed a font from the system. However, when you re-open TypeSet, or start a new application with a Font menu, TypeSet automatically checks with Pointless to make sure all of the needed fonts are available.

## Disabling TypeSet at Startup

If you need to disable TypeSet for some reason, select the **TypeSet** icon in the Desk.Accs folder (inside your System folder), then choose **Icon Info** from the **Special** menu. Select the **Inactive** checkbox, then restart your computer. TypeSet won't load at startup until you re-select the **Active** checkbox in the Icon Info window.

WestCode Software, Inc.  
15050 Avenue of Science, Suite 112  
San Diego, CA 92128  
619 · 487 · 9200