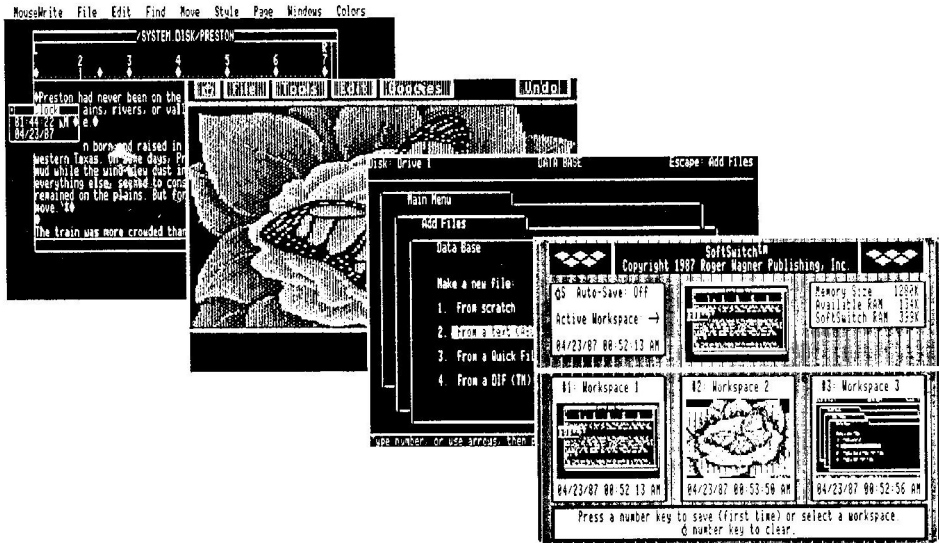


# SoftSwitch™

## Quick Start Guide



## The Multiple-Application Environment:

SoftSwitch & The Apple IIGS  
Change Apple II Computing.

*Roger Wagner Publishing, Inc.*

1050 Pioneer Way, Suite "P"  
El Cajon, CA 92020  
(619) 442-0522

# SoftSwitch Key Concepts...

- 1) SoftSwitch is implemented as an Apple IIGS Classic Desk Accessory. It requires an Apple IIGS with a 512K RAM Expansion Card (minimum) and a 3.5" disk drive.
- 2) SoftSwitch will switch up to 3 different programs. In addition to switching programs, it can be used to copy and paste graphics display screens from one program to another. It can also "revert" the computer to an earlier point in time. One of the easiest uses for SoftSwitch is to keep a copy of the DeskTop in memory with SoftSwitch. This means that the user can return to the DeskTop instantly without having to wait for the DeskTop to load again. This alone is a powerful benefit of SoftSwitch.
- 3) SoftSwitch also makes every Apple program an instant "Desk Accessory" to every other program. Thus you can use PinPoint desk accessories with many different programs like Managing Your Money, MouseWrite or other programs, not just AppleWorks; you can use the DeskTop calculator or file utilities with any program; the combinations are limitless.
- 4) SoftSwitch makes it easy to simultaneously use many different programs. You can load programs such as AppleWorks, MouseWrite, Dazzle Draw, Print Shop, etc. that you use often, and then just switch instantly between them. ProDOS 16 programs that follow Apple's design standards, like PaintWorks Plus, CAN be started from the DeskTop. When you're done with that program, just Quit with the standard menu item in that program and it will return to the DeskTop with SoftSwitch and any other stored programs still intact.
- 5) SoftSwitch is loaded automatically when you start your usual Apple IIGS startup disk, and switches ProDOS 8 or DOS 3.3 programs, including most protected software programs. If a program allows access to the Desk Accessory Menu, it is compatible with SoftSwitch. Switchable programs include Print Shop, Dazzle Draw, MouseFiler, the Apple II DeskTop, F-15 Strike Eagle, Copy II Plus, Managing Your Money to name a few. Starting a disk does not disconnect SoftSwitch, or any of the currently switched programs unless you start a ProDOS 16 disk. For example, with a Sider hard disk, you can boot once into ProDOS and set up the DeskTop in SoftSwitch, and then actually re-boot the Sider into DOS 3.3 with SoftSwitch and ProDOS still in place, and switch back and forth.
- 6) SoftSwitch does not currently switch ProDOS 16 for a number of reasons:

Most ProDOS 16 programs use at least 512K of memory. There isn't enough room to load two programs *plus* SoftSwitch on most RAM Expansion Cards currently available.

Most current commercial ProDOS 16 programs do not follow the Apple Design Standards. Therefore, they either can't be launched from the DeskTop (they're protected and must be started separately), or they turn off the Desk Accessory Menu and do other non-standard things.

- 7) Single copies of SoftSwitch are licensed to you for use with a maximum of two computers per purchased copy. It can be installed on as many customer-owned system disks, including hard disks, as desired, and these disks can be backed up at any time. Only the SoftSwitch Install disk is copy-protected. A free back-up Install disk is provided when the Registration Card is returned to Roger Wagner Publishing, Inc. SoftSwitch has a 30 day guarantee and replacement disks may be obtained for \$10.00 after that.

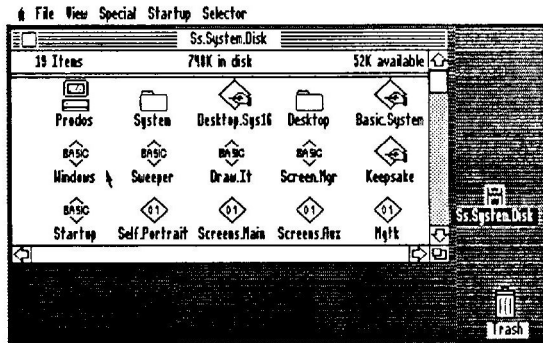
# A Quick Look at SoftSwitch...

Before starting, make sure that your RAM Disk setting, as defined in the Apple IIGS Control Panel, is 512K *or less*. The smaller your RAM Disk setting, the *more* room will be available for SoftSwitch stored programs. ØK provides the most memory for SoftSwitch.

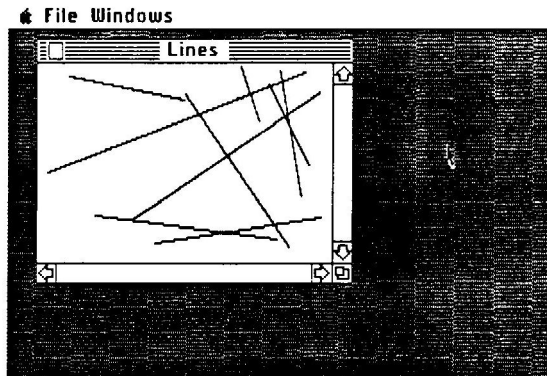
To see how SoftSwitch works, try these steps:

## Using the DeskTop to Start a Program:

- 1) Start on the SoftSwitch Dealer Demo disk. This will automatically install SoftSwitch as a Classic Desk Accessory. After pressing Return at the title screen, the Apple DeskTop will automatically be started. The SS.System.Disk will appear on the DeskTop as a disk icon.
- 2) Click twice (double-click) on the SS.System.Disk icon to open the disk. The DeskTop should now appear like this:

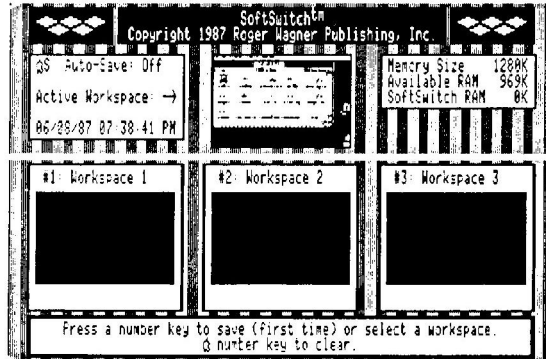


- 3) To run a program from the DeskTop, you just double-click on the icon. Double-click on the "Windows" program icon in the second row of the displayed files in the SS.Dealer.Disk window. This will run a simple demonstration program that represents "any program" that you might want to run from the DeskTop.
- 4) When the Windows menu bar appears, pull down the menu "Windows" and select "Lines." A Window will open with lines being drawn in it. Quit the program, and return to the DeskTop by pulling down the "File" menu, and selecting "Quit."



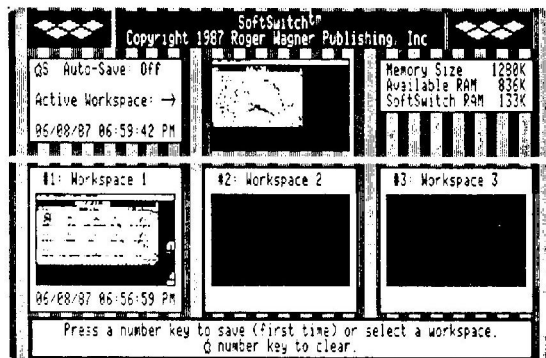
## Using SoftSwitch to Quickly Return to the DeskTop:

- 5) You have just seen how a program was started and quit using the Apple II DeskTop - before SoftSwitch.
- 6) Let's try this again, and see how SoftSwitch can be used to quickly return to the DeskTop when you're finished with a program. Open the SS.System.Disk icon again. Now, before running Windows again, save the DeskTop in SoftSwitch. This is done by pressing Control-⌘-Escape to go to the Desk Accessory menu. Use the arrow key and Return to select SoftSwitch. The following screen will appear:



This is the main SoftSwitch display screen. The top center mini-screen shows the currently active program you just interrupted, i.e., the DeskTop. To store any program in SoftSwitch, just press the number key of any empty Workspace (one of the blank areas). Press the "1" key now to store the DeskTop. You will see the image copied to Workspace #1. That's all you need to do to save a suspended program in SoftSwitch. Press Return twice now to return to the DeskTop. Pressing Return (or Escape) at the main SoftSwitch display will always exit SoftSwitch back to the Desk Accessory Menu, and from there pressing Return again will return to the currently active program.

- 7) At the DeskTop, double-click to run the program Windows again. When the program is running, open the Lines window again, as in step 4), *but do not quit the program*. Instead, go to SoftSwitch as you did before (Ctrl-⌘-Escape). The screen will now look like this:



This shows the Windows program screen as the "active" program.

- 8) To quit back to the DeskTop, just press "1". To switch to any program in SoftSwitch, just press the number key of a Workspace with a stored program in it. In this case, SoftSwitch will prompt you, reminding you that you will lose Windows by switching back to the DeskTop without saving Windows first. Since this is what you want to do, press "Y", and Return twice. You're now back at the DeskTop! This is much faster than doing a normal Quit within the application program itself.

This is the first, and easiest, use of SoftSwitch: Quickly returning to the DeskTop when you're done with a program.

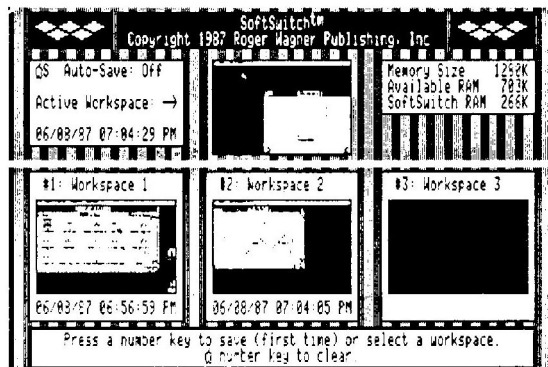
### Switching Programs with SoftSwitch:

- 9) Now, let's see how to switch a program. From the DeskTop, run Windows again.
- 10) Open the Lines window again, and go to SoftSwitch. Press "2" to save the Windows program in Workspace 2. Now press "1" to switch back to the DeskTop. Notice that this time, the Windows program is now stored in Workspace 2. Press Return twice to go back to the DeskTop.
- 11) Now press Ctrl- $\square$ -Escape and go back to SoftSwitch. Press "2", indicating you want to switch to the program (Windows) in Workspace #2. SoftSwitch will prompt you reminding you that this will lose the current state of the DeskTop. Since there is already a copy in Workspace #1, press "Y". The active program display will immediately shift back to Windows (Workspace #2). Press Return twice, and you're back in the Windows program!

SoftSwitch commands are "context-sensitive," that is, the main commands are simply the number keys 1, 2 and 3. SoftSwitch uses the context of when the key is pressed to decide what to do. If you press the number key for a Workspace that is empty, SoftSwitch will save the program in the blank Workspace. If the Workspace already has a program in it, SoftSwitch will switch to that program.

### Auto-Save and SoftSwitch:

- 12) In the last example, when you switched from the DeskTop (Workspace #1) back to Windows (Workspace #2), you abandoned the current state of the DeskTop when you switched to Workspace #2. This can be avoided in one of two ways.
- 13) Open the "Boxes" window in the "Windows" menu (you are back in the Windows program aren't you?). Click on the Lines' window close box to put it away. Go to SoftSwitch with Ctrl- $\square$ -Escape.
- 14) The screen should now look like this:



SoftSwitch is showing that the active program is different than the stored program. To erase a stored Workspace, press the Open-Apple key and the appropriate number key. Press ⌘-2 now to erase the old state of Windows. Then immediately press "2" to re-store the new program image. Now press "1" to switch to the DeskTop (Workspace #1). This is one way to switch programs and update the stored programs as you switch.

- 15) There is a better (and automatic) way. It is called "Auto-Save". To demonstrate this, press Return twice to go back to the DeskTop, and close the SS.Dealer.Demo disk window by clicking in the close box.
- 16) Now go back to SoftSwitch. Notice that the active and stored screens are again different. To synchronize the two, press Open-Apple-S (⌘-S). SoftSwitch will prompt telling you that it is about to update the stored Workspace (#1). Press "Y" to confirm.
- 17) Auto-Save is now on. Press "2" and Return twice to switch to Windows. Then go back to SoftSwitch. Notice that as soon as you enter, Workspace #2 is automatically updated. Now press "1" and Return twice to go to the DeskTop. SoftSwitch no longer prompts you with any messages, because the Workspaces are managed automatically.

If Auto-Save is "off," the user can revert a program to a previous state. This is useful for adventure games, drawing programs, debugging, or any situation in which you want to return to a previous state. Auto-Save must also be "off" when *first installing* the saved Workspaces prior to switching.

Once the desired Workspaces have been set up, Auto-Save is turned on, and may be left on until the user wants to re-enable the ability to revert.

It is left entirely to the user to decide which setting for Auto-Save they prefer to be in effect.

### Other Uses for SoftSwitch:

Now that you've had a chance to briefly look at SoftSwitch, you may want to look over pages 3-6, and 73-75 in the SoftSwitch manual for a very good list of the many uses of SoftSwitch. It is well worth your time to quickly review these benefits of SoftSwitch.

### Using SoftSwitch with AppleWorks:

You can use the DeskTop to start AppleWorks from any on-line disk device, and then set up AppleWorks in a Workspace. Because AppleWorks immediately takes control of *all* available memory in the Apple IIGS, it should be installed *last* when setting up a group of programs to be switched. It is also not a good idea to revert AppleWorks, so Auto-Save should be turned on once AppleWorks is saved in a Workspace.

### Using SoftSwitch with ProDOS 16 Programs:

You can run any ProDOS 16 program (that follows Apple's Design Standards) from the DeskTop, and SoftSwitch and any stored programs will not be disturbed. A good demonstration of this is to set up some stored Workspaces, and then start the program "Brickout.S16" on the SS.System.Disk. This is a ProDOS 16 program that uses Super Hi-Res graphics. SoftSwitch is accessible during the program, but it cannot switch programs while a ProDOS 16 program is active. This is because of a number of factors, not the least of which is that since most commercial ProDOS 16 programs take 512K or more of memory, there simply isn't enough room on the Apple RAM Expansion card to store two programs *and* SoftSwitch. In addition, it is unfortunate to note that many of the current commercial ProDOS 16 programs either prevent access to the Desk Accessory Menu, or require a cold start to run, thus precluding the use of SoftSwitch. This subject is covered in more detail in the SoftSwitch manual, pages 71-72.

### **Using SoftSwitch with 5.25 disks:**

SoftSwitch can be used with programs (such as Dazzle Draw, Print Shop, Managing Your Money, etc.) on 5.25 disks, even if they are copy-protected. If the disk is a ProDOS disk, its icon will show up on the DeskTop, and can be opened, and the appropriate SYSTEM file run by double-clicking. If the disk does not show up on the DeskTop, (such as is the case with Print Shop), just select "Slot 6" (or whatever the appropriate slot is) from the "Startup" menu of the DeskTop. This will boot the diskette without losing SoftSwitch or any stored programs! You can then switch between the booted program just as you would any other program. When you are finished, just erase the stored Workspace for the program with the Open-Apple-# command, and switch back to the DeskTop.

### **Learning More About SoftSwitch:**

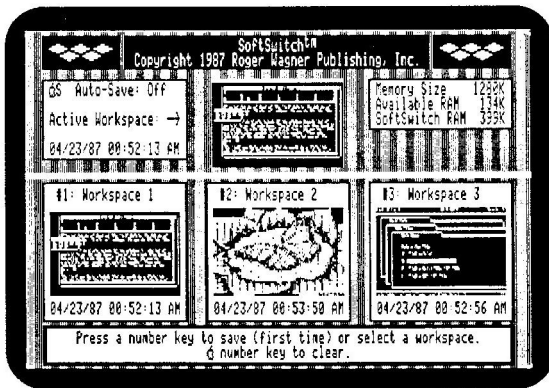
SoftSwitch has much more to offer than what has been briefly touched upon in the Quick Start Guide, including a graphics Copy & Paste function. To learn more about SoftSwitch, we recommend you work through the examples in the SoftSwitch manual that accompanies this letter.

If you have a hard disk attached to your Apple IIGS, you may also want to read Chapter 2, "Installing SoftSwitch," to see how to put SoftSwitch on your hard disk for automatic loading each time you start up the computer. Installing SoftSwitch is not necessary unless you want to put SoftSwitch on a diskette other than the SS.SYSTEM.DISK that is shipped in the SoftSwitch package.

# Roger Wagner Publishing, Inc. Announces 10,000 New Applications for the Apple IIGS!

## SoftSwitch™!

SoftSwitch lets you switch instantly between completely different applications with your Apple IIGS...



- Combine program features between different programs.
- Switch between ProDOS 8 & DOS 3.3 programs.
- Instantly return to a program selector like the DeskTop from any program.
- Save most programs to disk in mid-operation to resume any time later.
- Copy & Paste graphics screens between programs.

Imagine bringing Switcher™ to the Apple IIGS. Imagine being able to switch between programs on the IIGS with just a keystroke. Imagine being able to instantly revert the entire computer state back to a program selector like the DeskTop when you're finished with a given application. Imagine interrupting a program at any instant, capturing a screen graphic, then switching to another already loaded program and "pasting" that image into it. Imagine all this and more and you can start to imagine the power of SoftSwitch.

With SoftSwitch, over 10,000 programs on the Apple II become a "desk accessory" for every other program, and acquire a multitude of new uses! For example, you could add the file utilities of Copy II Plus™ to AppleWorks™ or Managing Your Money®, or a graphics printing program like Printographer™ to Fantavision®, or use Blazing Paddles™ to edit Print Shop™ graphics! Program switching takes just seconds, and the SoftSwitch display shows a graphic mini-screen of each of the programs you're using.

***Roger Wagner Publishing, Inc.***

1050 Pioneer Way • Suite P • El Cajon, CA 92020

Customer Service and Technical Support: (619) 442-0522