

Update

Booklet

TrueType font technology

for the Apple Mac

By Alan Hux

M I M

POINTLESS

2.0



POINTLESS 2.0

UPDATE BOOKLET

The Next Generation of TrueType™ Font Technology
for the Apple IIGS®

by Alan Bird



WestCode Software, Inc.

15050 Avenue of Science, Suite 112

San Diego, California 92128

(619) 487-9200 • Fax (619) 487-9255

Downloaded from www.Apple2Online.com

CONTENTS

■ ONE	Introduction	1
	Welcome to Pointless 2.0	2
	What's New in 2.0	2
	The User Manual	4
■ TWO	Installing Pointless 2.0	5
	Updating Your Previous Version	6
■ THREE	New Features and Changes	9
	Character Generation	10
	Automatic Font Adding/Removing	11
	Changes to the Control Panel	12
	Add	13
	Remove	14
	Configure	15
	Save Font	15
	Display	16
	Preferences	18

1

Introduction

WELCOME TO POINTLESS 2.0

Pointless™ 2.0 clearly demonstrates WestCode Software's commitment to producing high quality, state of the art software. The initial version of Pointless has enabled countless numbers of Apple IIgs users to vastly and easily improve their screen and printer output. However, through invaluable user comments and our own continued research, we have improved on what many have already exclaimed to be an outstanding program.

WHAT'S NEW IN 2.0

Pointless 2.0 includes many noteworthy new features for Pointless owners, including: increased speed, decreased memory requirements and easier operation.

The speed increase in Pointless 2.0 is made possible by both faster font generation algorithms and a completely new method of generating fonts. Instead of generating an entire character set when a font is requested, Pointless 2.0 creates individual characters "on-the-fly", as you type them. This means you'll no longer have to wait for Pointless to render a complete character set, making typing, printing and document display

significantly faster under Pointless 2.0. In fact, Pointless 2.0 is so fast, we've removed the spinning cursor found in version 1.0!

But increased speed is not the only benefit from this new method of rendering fonts. You will also see a tremendous reduction in memory requirements. With Pointless 2.0, you can essentially use an unlimited number of fonts and sizes. And, you benefit even further as you'll no longer have to configure which characters you want to have available; rather, all characters, including extended and symbol characters, are always available.

Finally, Pointless 2.0 has many new features which make it easier to use, including: definable styles for how TrueType and bitmapped fonts appear in the Font menu, font display in 12, 18 and 24 point sizes and character set display with keyboard equivalents, multiple font removal, and automatic adding and removal of fonts placed in the **System/Fonts** folder.

All of these changes have made Pointless a faster, smarter and easier to use product. For a complete description of the changes outlined above, as well as instructions for their use, please read on!

THE USER MANUAL

Since the changes and improvements in Pointless 2.0 were made after the printing of the *Pointless User Manual*, we have included this supplement booklet to aid you in the use of the latest version of the software. This booklet identifies and explains changes made to the Pointless program. It also provides instructional reference for new features which have been added to Pointless.

Please continue to use the *User Manual* as the general reference and guide to Pointless. However, when you find differences between the manual and the program, please refer to this supplement booklet for additional information.

2

Installing Pointless 2.0

THE POINTLESS 2.0 UPGRADE

If you're a new Pointless user, installing Pointless for the first time, or if you want to install Pointless 2.0 on a different disk than where it's currently installed, please follow the instructions in Chapter 2 of the *Pointless User Manual* to install Pointless 2.0.

For users who have already installed an earlier version of Pointless, you'll need to re-install Pointless from the Pointless 2.0 disk. Please read the following instructions to update your previous version to Pointless 2.0.

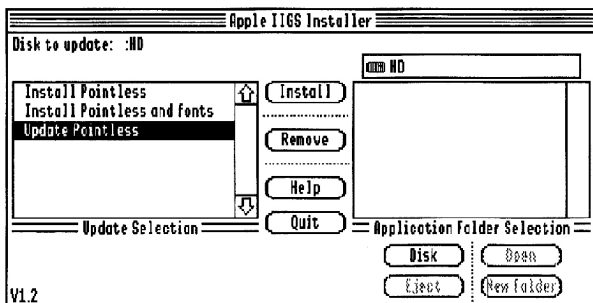
Updating your previous version of Pointless

Start up your computer, then insert the *original* Pointless 2.0 disk included with your upgrade package.



Double-click on the **Install** program icon to start the installer program. The installer will prompt you to personalize your Pointless disk by typing your name. Once you have personalized your copy of Pointless, the GS/OS Installer window will appear.

The upper left corner of the Installer window shows the **Disk to update**, which is the location where Pointless will be installed. Check to make sure that this shows the volume name of your startup disk or hard disk where you previously installed Pointless.



Hard Disk Installation

If you previously installed Pointless on your hard disk, make sure the name of the hard disk is shown next to **Disk to update**. To install Pointless 2.0 on this hard disk, choose the third installer selection, **Update Pointless**, then click the **Install** button. This selection will retain

your previous Pointless configuration file, which contains information about your installed fonts.

3.5” Disk Installation

If you previously installed Pointless on a 3.5” startup disk, insert that disk, then click on the **Disk** button until the disk name appears next to **Disk to update**. To install Pointless 2.0 on this disk, choose the third installer selection, **Update Pointless**, then click the **Install** button. If you have just one disk drive, you will be prompted to alternately insert the Pointless and startup disks — you will need to switch disks several times.

The **Update Pointless** selection will retain your previous Pointless configuration file, which contains information about your installed fonts.

To Activate Pointless 2.0 Restart Your Computer

After successfully completing the installation, the Installer will tell you that “An update has altered system files on the startup disk.” To restart and activate Pointless, click the **Quit** button, then click the **Restart System** button. Pointless 2.0 will load automatically during the GS/OS startup.

3

New Features and Changes

NEW FEATURES AND CHANGES

Many of the changes in Pointless 2.0 are internal performance and operation enhancements, such as the optimized character generation algorithms that render fonts for the screen and printer. Additionally, we've also added several new user interface options to the Pointless Control Panel. The following sections explain the changes and new features.

Character Generation

Pointless 2.0 includes a new method for character generation. Rather than generating every single character in a given font, Pointless generates characters as you type them. This provides three important benefits.

First, this new method is significantly faster. You'll no longer have to wait for an entire font to be generated before resuming your typing.

Second, Pointless is now able to create any character, at any time — even extended characters and symbols. Unlike previous versions, you'll no longer have to tell Pointless which characters you want to have available. Simply type and go!

Finally, the new character generation method drastically reduces memory requirements. This means you won't have to be concerned with how many fonts and how many different sizes you've used.

Automatic Font Adding/Removing

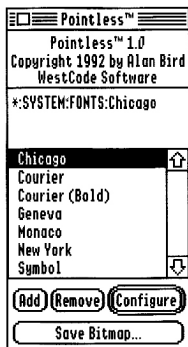
Pointless 2.0 now has the ability to automatically recognize when TrueType fonts have been added to, or removed from the **System/Fonts** folder. When Pointless sees that new TrueType fonts have been placed in the **System/Fonts** folder, it will automatically add them to the font list. Or, if Pointless sees that previously available fonts have been removed from the **System/Fonts** folder, it will remove these fonts from the font list.

Using this new feature is easy: all you have to do is copy or delete fonts from the **System/Fonts** folder. Pointless takes care of the rest.

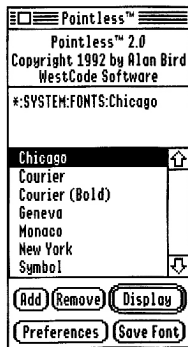
Please note that if you store fonts in a folder other than **System/Fonts** or on separate disks, you will still need to use the **Add** and **Remove** options found in the Pointless Control Panel to perform these operations.

CHANGES TO THE CONTROL PANEL

Many of the new features contained in Pointless 2.0 are accessible through its new Pointless Control Panel. The old and new Control Panel are shown below, followed by an explanation of new and changed features.



Old Control Panel



Pointless 2.0 Control Panel

You'll notice that some of the buttons at the bottom of the control panel have changed and others have been removed.

Keyboard Navigation of Font List

System 6 users may now select a font in the font list by typing the first character of the font's name. This really makes it easy to navigate a long font list!

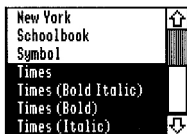
Add

If you store fonts in a location other than the **System/Fonts** folder, you may use this button to manually add new fonts. The **Add** button functions the same as in previous versions of Pointless. For more details please consult the *Pointless User Manual* (pages 33-40). However, please keep in mind that you may more easily add fonts, under Pointless 2.0, by simply copying them to your **System/Fonts** folder.

Multiple-font files (Suitcases)

The **Add** option has been further enhanced to allow better control of font files which contain more than one font (called *Suitcase* files on the Macintosh). Now, when you add a Suitcase or similar font file from the Pointless Control Panel, the fonts which were contained in the Suitcase will appear highlighted in the font list, allowing you to easily see which fonts were added.

For instance, if you were to add a font Suitcase file which contained four fonts from the Times family, the font list would appear with the four fonts highlighted, as shown at the right.



If you decide that you don't want all of the fonts that were added from the Suitcase, you may remove the fonts you don't want by holding down the *open-apple* key while clicking on the font names *that you want to keep*, leaving only the fonts to be removed highlighted. Then, a single click on the **Remove** button will delete the remaining highlighted fonts.

Select All Button

While in the **Add** dialog box, you will see a new button, labeled **Select All**. A single click on this button will select all entries listed in the window.

Remove

This option now allows you to remove multiple fonts at the same time. To select a font to be removed, click on its name. To select more than one font, hold down the *open-apple* key while clicking on additional font names (this is called *command-clicking*). You may also select a range of

fonts, by holding down the *shift* key while clicking on the last font in the range.

Once you have selected the desired fonts, click the **Remove** button. The removed fonts will be deleted from the font list (but not from your disk).

Configure

This button has been removed from the new Pointless Control Panel, as it is no longer necessary. Pointless 2.0 automatically generates any character on demand, making all characters in a font available at any time.

Save Font

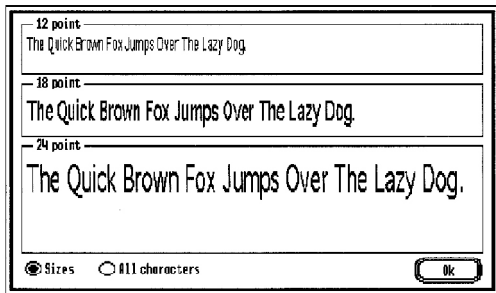
This option is identical in function to the previous **Save bitmapped...** option in the old control panel. However, we've added a thermometer indicator which shows the progress of the save operation. For additional information, please consult the *Pointless User Manual* (pg. 38-40).

Display

This new button allows you to view the selected font in two different ways. To use this feature, simply highlight a font by clicking on it (or, if you are using GS/OS System 6.0, type the first character of the font name), and then click the **Display** button; you may also double-click a font to activate this function.

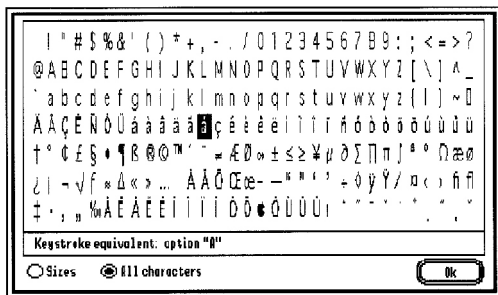
Sizes

By clicking the **Sizes** radio button at the bottom of the window, you can see the font in three different point sizes: 12 point, 18 point and 24 point.



All Characters

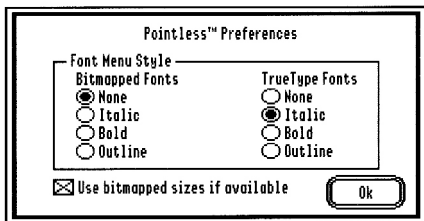
Clicking the **All Characters** radio button will display the entire character set of the selected font, showing all of the characters in the font, including special symbols and international characters.



While in the **All Characters** display mode, you may click on any character to have Pointless display the keystroke equivalent of that character. This is the key or key combination that you would type to enter that character. Now it's easy to find just the character you need.

Preferences

The Preferences option allows you to control two new aspects of the Pointless program; the appearance of fonts in the Font menu and the handling of bitmapped fonts. Upon clicking the **Preferences** button you will see the preferences dialog window.



The Preferences options are described in the following sections. When you have finished defining your preferences, you may click the **Ok** button to exit this screen.

Font Menu Style

The radio buttons below the **Bitmapped Fonts** and **TrueType Fonts**

headings allow you to control how you'd like the names of fonts to appear in the Font menu. If you want the names of your bitmapped fonts to appear italicized, select the **Italic** button below **Bitmapped Fonts**. Or, if you want the names of your TrueType fonts to appear bold, select the **Bold** button below the **TrueType Fonts** heading.

For instance, with this option, you can assign a different style to your TrueType fonts, so that you can differentiate them from your bitmapped fonts at a glance.



Font menu with TrueType fonts in Outline style

Use bitmapped sizes if available

This option controls how Pointless uses bitmapped fonts when you make a font request within a program. The check box provides two options.

Use bitmapped sizes if available

Checked

If this box is checked, Pointless will look in the **System/Fonts** folder to see if a bitmapped version of a font you have asked for is available. If Pointless finds such a font, and that font is in the *exact point size* you specified, Pointless will load that font instead of generating it. This is how Pointless operated prior to version 2.0.

Unchecked

If this box is unchecked, Pointless will use TrueType fonts exclusively, even when there is a bitmapped font available in the size requested. Unless you repeatedly use a specific font, in a specific size, you will want to leave this box unchecked.

CREDITS

SOFTWARE DESIGN AND DEVELOPMENT

Alan Bird

UPDATE BOOKLET

Tony Gentile and Rob Renstrom

COPYRIGHT

© 1992 WestCode Software, Inc.
All rights reserved.

This manual and the software described in it are copyrighted, with all rights reserved. Under the copyright laws, this manual or the software may not be copied, in whole or part, without written consent of WestCode Software, except in the normal use of the software or to make a backup copy of the software. This exception does not allow copies to be made for others. Under the law, copying includes translation into another language or format.

TRADEMARKS

Apple, Apple IIGS, Macintosh, TrueType, GS/OS, Finder and ProDOS are trademarks and registered trademarks of Apple Computer, Inc.

Pointless is a trademark of WestCode Software, Inc.

All other brand and product names are trademarks of their respective companies.

First Printing, November 1992

Printed in the United States of America.

The image consists of a 2x2 grid of quadrants. The top-left and bottom-right quadrants are white, while the top-right and bottom-left quadrants are black. A horizontal bar, split into a white left half and a black right half, is positioned at the bottom center of the grid. The word "POINTLESS" is written in a bold, black, sans-serif font across this bar, with the white background of the bar providing a high-contrast background for the black letters.

POINTLESS