

READ ME – POINTLESS

Thank you for your purchase of **Pointless**.™ This sheet describes additional information and changes that have occurred since the manual was printed. Please read this sheet in addition to the manual.

The Install Program

Use the **Install** program to copy the Pointless files to your GS/OS System Disk or hard disk – this is the only way to ensure a successful installation. If you have a hard disk, select the second installer choice: **Pointless and fonts**; otherwise, if you're installing Pointless on a 3.5" disk, select the first choice: **Pointless**.

Disk Space Needed to Install Pointless

To install Pointless you'll need at least 40K of space on your startup disk (pages 15-16 in the User's Manual incorrectly indicate that you need 32K of space). The manual has a list of non-essential files you can delete from your startup disk to get additional space. You can also delete one of the following two files located in your **System/System.Setup** folder: **TS2** or **TS3**. Which one you can delete depends on the ROM version of your IIGS. If your computer has ROM 1, you may delete **TS3**; otherwise, if it has ROM 3, you may delete **TS2**. If you are not sure which ROM version your computer has, simply restart your computer and the ROM version will be displayed at the bottom of the startup screen.

Conflicts with other Control Panel Devices

If the Pointless icon does not appear on the GS/OS startup screen or if you cannot access Pointless from the control panel, this may indicate a compatibility problem with other CDevs (control panel devices) or INITs installed on your System Disk. Try removing any non-standard CDev files in the **System/CDevs** folder and INITs in the **System/System.Setup** folder by dragging these files into a temporary folder (create a folder called **Disabled CDevs**, for instance). Then restart your system. If Pointless loads correctly, re-add these files one at a time to determine which file is causing the problem.

Memory Requirements

Pointless will work on a system with a minimum of 1.25 megabytes of memory. However, if you are using a high-resolution printer, such as the HP DeskJet, you will need additional memory to get the best results. In addition, if you're using System 6 or large applications, such as AppleWorks GS, which require a lot memory, we highly recommend that you have at least 2 megabytes of memory.

Printing at Large Point Sizes

When printing text at large point sizes (usually 40 point and higher), if the text prints with jagged edges or with the Shaston font instead of the correct font, this may indicate that you've encountered the 64K memory size limitation for fonts in GS/OS System 5.0 thru System 5.04. This problem was corrected with GS/OS System 6.0.

Print Quality

To get the highest quality text possible when printing, make sure that you have selected the **Best** print quality option in the Print dialog box. With certain printers the best quality option is represented by the highest printer resolution available, such as the HP DeskJet's 300 x 300 resolution. Also, select the **Vertical Condense** option, if available, to get the correct width-to-height proportions for the printed fonts.

New Phone Number for Customer Support

If you have questions about using Pointless, and you can't find a solution in the User's Manual or Update Booklet, you can contact our technical support staff directly by calling (619) 487-9233.

TypeSet™

Tools to help you
work smarter with fonts

Introducing **TypeSet™** — a powerful font management utility that will improve your productivity when working with fonts. TypeSet adds three highly useful tools to your TrueType™ font toolbox: a What-You-See-Is-What-You-Get Font menu, informative font Reports, and user-definable Font Sets — all in one easy-to-use package.



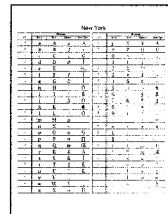
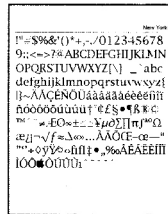
WYSIWYG

If you've ever wished that the font names listed in the Font menu would appear in their own typefaces, you'll really appreciate TypeSet's WYSIWYG Font menu feature. WYSIWYG (pronounced "wizzy-wig") stands for "What You See Is What You Get". It turns the plain, uninformative Font menu into one which saves you time by letting you see what your TrueType fonts look like before selecting them.

Reports

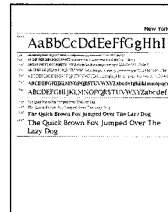
Being able to see what your typefaces look like in the Font menu is great, but it doesn't give you a complete picture of what the fonts will look like on paper. That's why TypeSet offers extensive reporting capabilities. With the Reports feature you can choose from any of four report designs. And, for added flexibility, you can send the reports to either the screen or the printer.

All Characters This report shows every character in a font at a large point size. This lets you see the subtle details of the characters in a font, reflecting the font's personality and unique design elements.



Keystroke Equivalents This report shows which keys you would type to get a particular character, including symbols and international characters. Now you'll always know how to get at those special symbols!

Line Samples This report shows up to ten different fonts on a single page. It includes the most common letters, numbers, and symbols. Plus it shows the disk location of each font — great for creating your own font catalog!



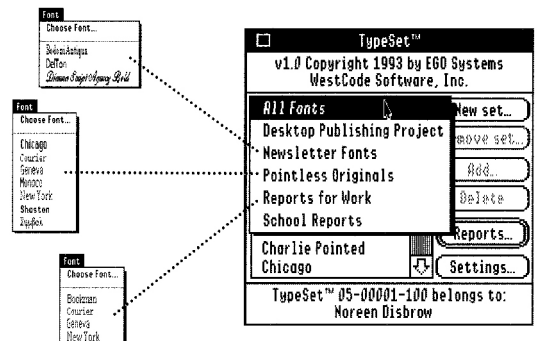
Various Sizes This report shows a font at a host of different sizes. And, you can customize it with your own multi-line phrase! Now you'll have a complete reference of what your fonts look like at various sizes.

Font Sets

The most powerful font management feature of TypeSet gives you total control over which fonts appear in the Font menu through user-definable Font Sets. Simply pick any group of fonts and assign a set name. Then, when you pull down the Font menu, only the fonts in the active Font Set will appear. Imagine how much more quickly and easily you'll be able to select your fonts!

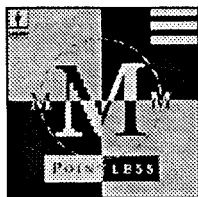
Plus, you can switch between sets anytime — even while your working within an application — and TypeSet will dynamically rebuild your Font menu. You can define Font Sets for any need: different projects, documents, types of fonts, applications, people, and more. Now that's working smart with fonts!

For a limited time, TypeSet is available at the special introductory price of **only \$29.95 — save \$20 off the regular \$49.95 price!** Call 1-800-448-4250.



fall sale

Extraordinary values on favorite Apple II software ➤ Sale ends October 31, 1994

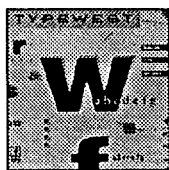


Get fantastic looking text on your printer.

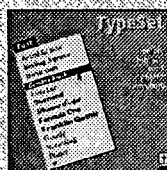
Pointless 2.0 — All your documents will look better than ever before, without unsightly hard-to-read jagged text. Pointless brings TrueType font technology to the Apple IIGS, providing impressive laser-sharp text on your ImageWriter, StyleWriter, DeskJet, and other printers. What's more, text on the screen will appear smooth at even the largest sizes. Pointless is a "must have" product for every IIGS owner—if you don't have it you're missing out on a whole new world of high-quality TrueType fonts. For the Apple IIGS, System 5 or later. Reg. \$69.95
Sale \$29.95

The quick brown fox
The quick brown fox

ImageWriter II printing before and after Pointless



TypeWest font collection — A versatile collection of forty professional-quality TrueType fonts for use with Pointless. TypeWest gives you the essential typefaces needed to create outstanding, eye-catching documents. Great for home, school, and work. A "must-have" for Pointless. IIGS with Pointless, or Macintosh. Reg. \$49.95 **Sale \$19.95**



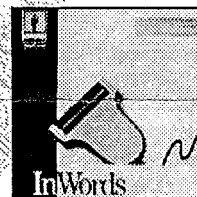
TypeSet — The perfect companion for Pointless that helps you manage your TrueType fonts. It provides a What-You-See-Is-What-You-Get: Font menu that displays your fonts in their own typefaces, font sets to work with custom groups of fonts, and extensive font reports to create a catalog of your fonts.

For the Apple IIGS with Pointless. Reg. \$49.95
Sale \$19.95

It's like typing 500 words per minute.

InWords 1.1 — Optical Character Recognition (OCR) software that lets you use a Quickie or LightningScan hand-held scanner to scan pages from books, magazines, letters, etc. into text that you can load and edit in your favorite applications: AppleWorks, PublishIt, BeagleWrite, HyperStudio, GraphicWriter, and others. NEW version 1.1 adds improved recognition, speed, line handling and more! Why type? Get InWords instead!

For the Apple IIe or Apple IIGS. Requires scanner. Reg. \$129.00 **Sale \$29.95**



ScanTray — A perfect companion for your hand-held scanner and InWords. The ScanTray provides a flat scanning surface with alignment guides to get perfect scans every time and improve the accuracy of OCR. Eliminates the problem of skewed images. By Lyra Group **\$39.00**

TableTrained — Twenty additional pre-trained font tables for use with InWords, including popular magazines and newspapers: USA Today, Reader's Digest, II Alive, Smithsonian, and others. **\$9.95**

Twilight II — The best screen saver for the IIGS with entertaining animations that help prevent screen burn-in. Watch floating clocks, fireworks, a snow storm, a kaleidoscope—over 40 fun displays in all. By DigiSoft **\$29.95**

Perfect Image — An improvement over Apple's ImageWriter II printer driver for the IIGS that provides excellent color and black & white halftone images of graphics, plus many additional printer controls. By Vitesse **\$19.95**

Harmony HP — This package lets you use Hewlett-Packard printers with your IIGS. Supports HP DeskJet/Writer (color), PaintJet/Writer, and LaserJet II/III. These high-resolution printers provide truly outstanding quality. By Vitesse **\$19.95**

Bullseye TrueType Font Collection — An 18 disk set with over 300 public domain fonts. If you're trying to build a large font library, you'll find an incredible variety of typefaces in this package, ranging from fun and symbol fonts to business and elegant fonts. An excellent supplement to the TypeWest collection. By II Productive **\$49.95**

How to order

☎ Call: **1-800-448-4250**



Fax: **1-619-487-9255**

✉ Mail:

Send your order with your Name and Address, and a Check (payable to WestCode Software) for the product total (CA residents add 7.25% sales tax, San Diego add 7%) plus \$6 shipping and handling to the address below. International orders: add \$8 s&h for software; call for ScanTray shipping.



WestCode Software, Inc., 15050 Avenue of Science, Suite 112, San Diego, CA 92128 • (619) 487-9200 • Fax (619) 487-9255