



RAM Enhancement Kit

Optional Accessory for Extended RAM Card Owners

Pinpoint™

Limitation on Warranties and Liability

Even though Pinpoint has tested the software described in this user guide and reviewed its contents, neither Pinpoint, Virtual Combinatics, nor its software suppliers make any warranty or representation, either express or implied, with respect to this user guide or to the software described in it, their quality, performance, merchantability, or fitness for any particular purpose. As a result, this software and user guide is sold "as is." The purchaser assumes the entire risk as to their quality and performance. In no event will Pinpoint, Virtual Combinatics, or its software suppliers be liable for direct, indirect, special, incidental, or consequential damages resulting from any defect in the software or user guide, even if they have been advised of the possibility of such damages. In particular, they shall have no liability for any programs or data stored in or used with Pinpoint products, including the costs of recovering these programs or data. Some states do not allow the exclusion or limitation of implied warranties or liability for incidental or consequential damages, so the above limitation or exclusion may not apply to you. If you think you bought a defective copy of Pinpoint Software, send the disk back to us and we'll send you a new disk, free.

Copyright

This user guide and the software (computer programs) described in it are copyrighted by Pinpoint and Virtual Combinatics, with all rights reserved. Under the copyright laws, this user guide or the programs may not be copied, in whole or part, without the written consent of Pinpoint or Virtual Combinatics, except in the normal use of software to make backup copies. This exception does not allow copies to be made for others, whether or not sold. Under the law, copying includes translating into another language or format.

You may use the software on any computer owned by you but extra copies cannot be made for this purpose. For some products, a multi-use license may be purchased to allow the software to be used on more than one computer owned by the purchaser, including a shared disk system. Contact Pinpoint for more information.

Notice

Pinpoint and Virtual Combinatics reserve the right to make improvements to this user guide and software described in it at any time without notice. Pinpoint and Virtual Combinatics cannot guarantee that you will receive notice of a revision to the software described in this user guide, even if you have received the product and returned a registration card received with the product. You should periodically check with your authorized Pinpoint dealer.

© Pinpoint Publishing 1986 • PO Box 13323 • Oakland, CA 94661 • (415) 654-3050

Third Edition

Software Author: Brian Skiba
User Guide Author: Eric Delore

Pinpoint, The RAM Enhancement Kit, and The RAM Switcher are trademarks of Pinpoint Publishing and Virtual Combinatics, Inc. Apple, Apple IIc, Enhanced Apple IIe, Apple Memory Card, Apple Writer, Unidisk 3.5, and AppleWorks are trade marks of Apple Computer Inc. Quark Catalyst is a trademark of Quark. Mousedesk is a trademark of International Solutions. RAMDRIVE, Super Desktop Expander, RamWorks, and Z-Ram are trademarks of Applied Engineering. SprintDisk is a trademark of AST Research. MultiRam is a trademark of Checkmate Technology. ASCII Professional Communications is a trademark of Southeastern Data Communications.

Table of Contents

List of Figures	List of Figures	iii
Preface	Helpful Things You Should Know	iv
Chapter 1	Introducing the RAM Enhancement Kit	1.1
Introducing the RAM Enhancement Kit	What Are You Waiting For?	1.1
	What You Need to Use the RAM Enhancement Kit	1.2
	Overview of What We'll Do in Chapters 2 and 3	1.3
Chapter 2	Getting AppleWorks Ready	2.1
Getting AppleWorks Ready	Expanding AppleWorks	2.1
	Installing Pinpoint on AppleWorks	2.2
Chapter 3	Using the RAM Enhancement Kit	3.1
Pulling it all together: The RAM Enhancement Kit	Creating a Working Copy of the RAM Enhancement Kit	3.1
	Booting The RAM Enhancement Kit	3.2
	The RAM Enhancement Menu	3.2
	Choosing Your Pinpoint Accessories	3.3
	Choosing ProDOS Files for the RAM Drive	3.5
	About ProDOS Pathnames	3.7
	Setting Your RAM/Startup Characteristics	3.8
	RAM Card Type: Pick a Card, Any Card	3.10
	RAM Drive Size: One Hand Giveth...	3.11
	Startup Prefix/Path: Choosing a Pathname...	3.13
	Exit Prefix/Path: Installing a Program Switcher	3.14
	the RAM Switcher	3.15
	the Quark Catalyst	3.16
	the International Solutions Mousedesk	3.16
	Creating A Startup Disk	3.17
	Using Your Startup Disk: The Hay is in the Barn	3.19
	Using The RAM Switcher	3.19
Appendices	Appendix A — RAM Drive Size vs. AppleWorks Desktop Size	A.1
	Appendix B — Error Messages	B.1
	Appendix C — Copying Data Files From RAM Disk	C.1
	Appendix D — Using a Z RAM Board with Applied Engineering's system clock	D.1
	Appendix E — Other Pinpoint Products	E.1
Index	The Index	

List of Figures

Figure 1.1	RAM Card Requirements	1.3
Figure 1.2	Required Steps for Various RAM Cards	1.4
Figure 3.1	RAM Enhancement Menu	3.6
Figure 3.2	Accessory Autocopy Selection Table	3.4
Figure 3.3	ProDOS file Autocopy Selection Table	3.6
Figure 3.4	RAM/Startup Characteristics Screen	3.9
Figure 3.5	RAM Card Type Screen	3.11
Figure 3.6	RAM Drive Size Screen	3.12
Figure 3.7	Enter Value Prompt	3.14
Figure 3.8	Insert RAM Drive Software Prompt	3.17
Figure 3.9	Insert Disk You Wish To Modify Prompt	3.18
Figure 3.10	The RAM Switcher	3.20

Preface

The RAM Enhancement Kit is an optional accessory for extended RAM card owners. You've invested valuable time and money in your RAM card. The RAM Enhancement Kit helps you realize its full potential. Like all Pinpoint products, the RAM Enhancement Kit is designed to help you get more from your Apple computer. Our package includes this user guide, and a floppy disk containing both the RAM Enhancement Kit and a sample version of the RAM Switcher, a highly functional RAM-resident program selector that's in the works at Pinpoint.

Isn't it nice to receive software on non-copy protected disks? Pinpoint distributes all its software, including the RAM Enhancement Kit, on non-copy protected disks because we want our software to be convenient to use, and because we trust you. Please remember that giving a copy of our software to a friend is a violation of copyright laws. Illegal copying of our software also makes it harder for us to make a living selling the software you'll be using and depending on every time you use your computer.

We value your assessment of our software and we want to include your ideas in our new products plans, so let's hear from you.

General Offices

(415) 654-3050

Mailing Address

Pinpoint Publishing • P.O. Box 13323 • Oakland, CA 94661 Attention: Product Development

If you would like to order another Pinpoint product, we have toll free sales lines. Just check the last appendix in this manual for a list of Pinpoint products and call:

24 Hour TOLL FREE Order Desk

United States (800) 633-2252 / Ext. 852

How to Get Great Technical Support

We have a technical support team ready to help you solve any problems or answer any questions you might have. Just call weekdays between 9 am and 5 pm West Coast time. Our technical support staff loves to talk about Apples. In fact, sometimes they get a little carried away. Please try and make your call as brief as possible, no matter how talkative our technical support person is. This way, the technical support lines will be available to more people. It would also be a great help if you could have the following information readily available when you call:

- Version #'s of Pinpoint products
- Registration identification #'s of Pinpoint products
- Version # of AppleWorks
- RAM card type and slot position
- Version #'s of RAM card software
- Computer model type
- Plus other information you think is important

Technical Support Telephone Number

(415) 654-0286 • 9 am to 5 pm West Coast time
Thanks!

Chapter 1

Introducing The RAM Enhancement Kit

Hello, and Thank You! You have purchased The RAM Enhancement Kit, one of the many tools from Pinpoint Publishing designed to help you get the most out of your Apple computer. This chapter will:

- ▲ Tell you a little about why we developed The RAM Enhancement Kit
- ▲ Tell you what you'll need to use The Ram Enhancement Kit with Pinpoint Desktop Accessories and AppleWorks
- ▲ And describe what we'll be going over in the rest of this guide

What are you waiting for?

More and more Apple owners are beefing up their computers by adding more random access memory. More random access memory, also known as RAM, enables a computer to keep more instructions inside, lessening the need to go out to a slow floppy disk to do things. What this means for Apple owners is much less time spent waiting for their computers to accomplish their tasks. In addition to increasing the speed, the added memory, if properly formatted, can be transformed into a versatile RAM drive up to five times the size of a floppy disk.

The Bigger They Are,...

Before The RAM Enhancement Kit, there were some disadvantages associated with using a Ram Drive. One problem was that when the machine was turned

Chapter 1

Introducing The RAM Enhancement Kit

off, the RAM drive, along with everything on it, simply vanished. Another problem was that certain programs like AppleWorks would hog all the computer memory, thereby preventing the use of a RAM drive for additional applications.

Better than a Bump on the Head

The RAM Enhancement Kit offers a solution to the electronic amnesia suffered when pulling the plug on a RAM drive that is more effective than some traditional remedies. By allowing you to construct an AppleWorks startup disk that creates a RAM drive to your exact specifications, The RAM Enhancement Kit makes sure your computer's memory is restored just the way you want it every time you boot up AppleWorks.

Now you can automatically load program, data, and reference files into the Ram drive so they will be there instantly when you need them. Of course, you must save any files you create or change with a RAM drive to a floppy or high capacity disk before turning off your computer.

Breaking Up the Memory Monopolists

The RAM Enhancement kit puts an end to Software Darwinism by ensuring that programs capable of grabbing all the available memory don't starve other applications out of the memory market. By allowing you to reserve computer memory for other applications, memory magnates like AppleWorks are kept in their partitions, and your other applications are given room to operate on the Ram drive. This makes for creative computing.

Ready, Aim, Fire!

The RAM Enhancement Kit not only allows you to load up your RAM drive with AppleWorks, Pinpoint Desktop Accessories, and other applications, but also allows you to quickly point and shoot between these applications using the Ram Switcher program included on the disk. When you are done using a program you loaded onto the Ram drive, Ram Switcher provides you with a list of all the programs you loaded onto the RAM drive. You can then use an arrow key to point to the program you want to use next, and press return to have the computer instantly fire up the program.

The version of The Ram Switcher included with The RAM Enhancement Kit is just a sampler of a much more sophisticated RAM Switcher that is now in the works at Pinpoint. Optionally, you can use the Quark catalyst 3.0 or the International Solutions Mousedesk with the RAM Enhancement Kit to switch between programs that have been loaded onto the RAM drive with the RAM Enhancement Kit.

What You Need

To complete the steps outlined in the following chapters, you'll need:

- ▲ A non-write-protected COPY of the RAM Enhancement Kit Disk

- ▲ A non-write-protected COPY of the Pinpoint Installation Disk
- ▲ A non-write-protected COPY of the AppleWorks startup disk.
- ▲ A non-write-protected COPY of the AppleWorks Program disk if you have an Applied Engineering or Checkmate Technologies RAM card.

You'll also need a RAM card. The following chart shows you which RAM cards you can use with the RAM Enhancement Kit and the manufacturer's RAM card software you'll need, if any.

Figure 1.1
RAM Card Requirements

RAM Card Requirements

RAM Card Manufacturer	RAM Card Model	Required RAM Card Software
Apple	Apple II Memory Expansion Card	None
Applied Engineering	RamWorks	Version 4.3+ of Super Desktop Expander
Applied Engineering	RamWorks II	and Version 3.3+ of the RAMdrive Disks
Applied Engineering	Z Ram	Or simply Version 4.7+ of the Super Desktop Expander
AST Research	MegaRamPlus	AppleWorks Expansion
AST Research	SprintDisk	None
CheckmateTechnologies	MultiRam IIe	Version 4.0+ of MultiRam Software
Checkmate Technologies	MultiRam C	Version 4.3 of MultiRam requires Version 1.2+ of Pinpoint

IMPORTANT: If you have problems with your RAM card software, you should contact the manufacturer of your RAM card, NOT PIN-POINT, for the version of the RAM drive software that you need. We'll keep the manufacturers up to date so they can keep you up to date.

Here's What We'll do:

Our goal in all this is to create an AppleWorks disk that will work with the Pinpoint Desktop Accessories and create a RAM drive to your exact specifications. Depending on which RAM card you're using, achieving this goal is as easy as completing two or three of the following steps.

In Chapter Two, we will make sure your AppleWorks disk is ready for The RAM Enhancement Kit by:

- 1. Expanding the AppleWorks Desktop (Expanding AppleWorks gives AppleWorks the ability to handle more memory)
- 2. And Installing Pinpoint on the AppleWorks Disk (Installing Pinpoint on the AppleWorks disk lets you use the Pinpoint Desktop Accessories from within AppleWorks)

In Chapter Three, we will pull the first two steps together by:

- 3. Using The Ram Enhancement Kit (Using The RAM Enhancement Kit pulls the first two steps together by letting you tell AppleWorks how much more memory it can have, and by letting you specify the Pinpoint Desktop Accessories and ProDOS files you want automatically loaded to the Ram drive)

Please find your RAM card in the following chart to see which of the three steps outlined above you must complete to create an AppleWorks disk that works with the Pinpoint Desktop Accessories and creates a RAM drive to your exact specifications. Then turn to Chapter 2 and we'll get started.

Figure 1.2
Required Steps for Various
RAM Cards

Required Steps for Various RAM Cards

RAM Card Model	Chapter 2		Chapter 3
	Step 1. Expand AppleWorks	Step 2. Install Pinpoint	Step 3. Use RAM Enhancement Kit
Apple II Memory Expansion Card	No	Yes	Yes
Applied Engineering RamWorks	Yes	Yes	Yes
Applied Engineering RamWorks II	Yes	Yes	Yes
Applied Engineering Z-Ram	Yes	Yes	Yes
AST Research MegaRamPlus	Yes	Yes	Yes
AST Research SprintDisk	No	Yes	Yes
Checkmate Technologies MultiRam IIe	Yes	Yes	Yes
Checkmate Technologies MultiRam C	Yes	Yes	Yes

Chapter 2

Getting AppleWorks Ready

This chapter will help you make sure your AppleWorks startup disk is ready for the RAM Enhancement Kit by briefly showing you:

- ▲ How to expand AppleWorks
- ▲ And how to install Pinpoint onto AppleWorks

Step 1. Expanding AppleWorks

This procedure will give AppleWorks the ability to handle more memory. **If you have an Apple II Memory Expansion Card or an AST Research SprintDisk, you don't have to expand AppleWorks, so skip Step 1 and go on to Step 2.** The instructions in this section are for those of you using an Applied Engineering RAM card with their Super Desktop Expander. If you don't have an Applied Engineering RAM card and their Super Desktop Expander, use the instructions that came with your desktop expander.

The main thing to remember is that no matter which AppleWorks expander you're using, you must run it and then install Pinpoint onto the expanded AppleWorks before using the RAM Enhancement Kit.

To expand AppleWorks, you will need:

- ▲ A copy of Applied Engineering's Super Desktop Expander
- ▲ Copies of your original AppleWorks Startup and Program disks

The first thing you should do is use Central Point Software's Copy II Plus, the Apple IIc System Utilities, the Apple IIe ProDOS Filer, or any ProDOS copy routine to make copies of your original AppleWorks Startup disk, Program disk, and Applied Engineering Super Desktop Expander disk. Put your original disks in a safe place and use the copies. It's always a good idea to use copies of all your program disks.

Now you should:

1. Place your copy of the Super Desktop Expander Disk in your disk drive
2. Start your computer
3. When the program boots, choose "Execute AppleWorks Desktop Enhancements"

Set up the AppleWorks disks the way you want them by choosing the desired options. The program will guide you the rest of the way.

Step 2. Installing Pinpoint on the Expanded AppleWorks Startup Disk

This procedure will enable you to use the Pinpoint Desktop Accessories from within AppleWorks. Every one must complete this step. **If you have an Apple II Memory Expansion Card or an AST Research SprintDisk, the AppleWorks you'll be installing Pinpoint on will not have been expanded. Don't worry, just use a copy of your original AppleWorks Startup disk.**

To install Pinpoint on the expanded AppleWorks startup disk, you will need:

- ▲ A copy of the Pinpoint Installation disk
- ▲ The Pinpoint User Guide

When you've got all you need:

1. Place the Pinpoint Installation disk in your drive
2. Start your computer

Chapter 2

Getting AppleWorks Ready

Now:

3. Turn to page 94 in your Pinpoint User Guide and follow the directions
(it's easy to write software manuals!)

Chapter 3

Pulling It All Together: The RAM Enhancement Kit

Among other things, the RAM Enhancement Kit will allow you to pull the steps outlined in the preceding chapter together by letting you tell AppleWorks just how much memory it can have, and by letting you specify the Pinpoint Desktop Accessories and ProDOS files you want loaded to the RAM drive.

You will tell the RAM Enhancement Kit exactly the kind of RAM drive you want, and the RAM Enhancement Kit will put your instructions into a file it will create called "PREBOOT.SYSTEM." The RAM Enhancement Kit will copy this file onto the Pinpoint-ready, expanded AppleWorks startup disk you created in Chapter 2. You will then place this modified AppleWorks startup disk in a drive and start your computer when you want to use the Pinpoint Desktop Accessories and AppleWorks with your customized RAM drive.

Create a Working Copy of the RAM Enhancement Kit Disk

First things first. The disk we provided you will not work because it is write-protected. You can see that the disk write-protected because it has no notches on its sides. We provided you with a write-protected disk to protect your investment.

Before you do anything with the RAM Enhancement Kit, please use Central Point Software's Copy II Plus, the Apple IIc System Utilities, the Apple IIe ProDOS Filer, or any ProDOS copy routine to make a working copy of the original RAM Enhancement Kit disk. Put the original disk in a safe place and use the copy as your work disk. Do not cover the notches on your work disk with a write-protect tab. If somebody uses your work disk for magnetic origami, or as a

Chapter 3

The RAM Enhancement Kit

doily for tea, you will be able to replace it by making another copy of the original disk.

Booting The RAM Enhancement Kit

To boot The RAM Enhancement Kit:

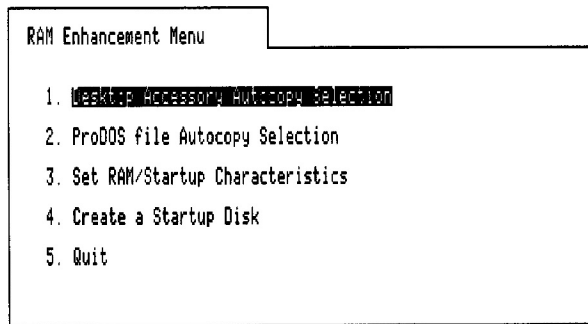
1. Place a copy of the RAM Enhancement Kit disk in your disk drive
2. Start your computer

When the computer finishes booting, the RAM Enhancement Menu will appear.

Figure 3.1
RAM Enhancement Menu

Path: /PP.RAMKIT/

PINPOINT RAM ENHANCEMENT KIT



Type number, or use arrows, then press Return

Q-? for help

This menu lets you decide if you want to:

1. Specify the Pinpoint Desktop Accessories you want automatically copied to the RAM drive at startup
2. Specify the ProDOS files, such as Pinpoint Desktop Accessory data files, Apple Writer, or ASCII Express Pro, you want automatically copied to the RAM drive at startup
3. Set the RAM/Startup characteristics such as the RAM card type, the RAM drive size, and the startup and exit prefixes and paths

Chapter 3

The RAM Enhancement Kit

4. Create a startup disk using the current settings
5. Or, forget the whole thing and go grab a beer

It's easy to choose one of the five options on the RAM Enhancement Menu:

1. Type the number preceding the desired option, or use an **ARROW** key to move the highlighting cursor to the desired option
2. And press **RETURN**

If you choose an option and want to get back to the RAM Enhancement Menu:

1. Press **ESCAPE**

How to Get Help Along the Way

If you need some more coaching along the way:

1. Press **OPEN-APPLE ?** for help screens.

Choosing Your Pinpoint Accessories

If you want to specify which Pinpoint Desktop Accessories will be automatically copied to the RAM drive at startup, you should:

1. Place your Pinpoint Installation Disk in a drive
2. And choose the "Desktop Accessory Autocopy Selection" option from the RAM Enhancement Menu (please see figure 3.1)

The program will ask you to place the Pinpoint Installation disk in a drive if you forget to do so.

The Accessory Autocopy Selection Table will appear.

Chapter 3

The RAM Enhancement Kit

Figure 3.2
Accessory Autocopy
Selection Table

PATH: /PP.RAMKIT/

Accessory Autocopy Selection

Descriptive Name	File Name	Autocopy	Comments
Appointments	CALENDAR.PP	Yes	External
Calculator	CALCULATOR.PP	Yes	External
Communications	COMM.PP	Yes	External
Dialer		No	Internal
GraphMerge	GRAPHMERGE.PP	Yes	External
Notepad	NOTEPAD.PP	Yes	External
QuickLabel	QUICKLABEL.PP	Yes	External
Typewriter	TYPEWRITER.PP	Yes	External

Use the ↑ or ↓ to position to the accessory. Press Return to change the Autocopy setting. Press Escape to exit. Press G-? for Help.

The Accessory Autocopy Selection Table is comprised of four columns:

1. The “Descriptive Name” column tells you in plain English what accessory the rest of the table is talking about
2. The “File Name” column gives you the computer’s nickname for the accessory
3. The “Autocopy” column is most important. It lets you know whether or not the selected accessory will be copied to the Ram drive. A “Yes” means that the corresponding accessory will be copied to the RAM drive. A “No” means that the corresponding accessory will not be copied to the RAM drive. Any changes that you make in this table will occur in this column
4. The “Comments” column serves two purposes. It tells you whether the accessory is external (on a floppy disk) or internal (already memory resident), and it makes you look cool when someone’s looking over your shoulder at this stage of the program

To change the Autocopy setting for an accessory:

1. Use an up or down ARROW key to position the highlighting cursor on the desired option

Chapter 3

The RAM Enhancement Kit

2. And press RETURN to change the Autocopy setting

When you are satisfied with the Autocopy settings:

3. Press ESCAPE to exit to the RAM Enhancement Menu

If you create a startup disk without first accessing the Accessory Autocopy Selection Screen, all the accessories will be copied to the RAM drive at startup.

Choosing ProDOS Files for the RAM Drive

If you would like to copy Pinpoint Desktop Accessory DATA files, like the Communications Phone Directory, or PROGRAM files, such as Apple Writer, or REFERENCE files, such as Pinpoint's Spelling Checker dictionary files, to the RAM drive at startup, select the second option, "ProDOS file Autocopy Selection," on the RAM Enhancement Menu.

To choose ProDOS files to be copied to the RAM drive:

1. Select the "ProDOS file Autocopy Selection" option from the RAM Enhancement Menu (please see figure 3.1)

The ProDOS file Autocopy Selection Screen will appear.

Chapter 3

The RAM Enhancement Kit

Figure 3.3
ProDOS file Autocopy
Selection Screen

PATH: /PP.RAMKIT/ ProDOS file Autocopy Selection

Enter the ProDOS pathname(s) to be copied to the RAM drive at startup.

/POINT.TO.POINT/PTP.SYSTEM
/ACCESSORY/LOGONMAC.PP
/ACCESSORY/APPOINTMENTS.PP
-

Enter the path names of up to 16 files that should be copied to the RAM drive at startup. Press Escape to exit. Press G-? for Help.

Notice the flashing cursor in figure 3.3. This is where you start entering the pathnames of up to sixteen ProDOS files you want copied to the RAM drive at startup. If you would like a brief explanation of pathnames, please see the next section, "About ProDOS Pathnames."

To enter a pathname of a ProDOS file you want copied to the RAM drive at startup:

1. Type the **/Volume name/Directory name/File name** of the file (you only need a Directory name if the file is in a subdirectory of the disk)
2. And press RETURN to move you to the next entry position

If you make a mistake when entering your pathnames, you can:

1. Press the DELETE key to delete the character to the left of the cursor
2. Press the RETURN Key to move the cursor all the way down to the bottom of the screen and back to the top
3. Press the OPEN APPLE and the E key to turn overstrike off and on

Chapter 3

The RAM Enhancement Kit

4. Press the CONTROL and the X key to erase the entire line that the cursor is on
5. Press the CONTROL and the Y key to erase from the cursor to the end of the line that the cursor is on
6. Press the CONTROL and the Z key to recover what you erased

When you are done entering pathnames:

1. Press RETURN, then press ESCAPE to exit back to the RAM Enhancement Menu

Here are the pathnames of a few Pinpoint Desktop Accessory data files you might want copied to the RAM drive at startup:

Communications Phone Directory data file:

/accessory/logonmac.pp

Appointment Calendar data file:

/accessory/appointments.pp

Important: It is highly recommended that you load to the RAM drive only those data files that are not changed too often. If you make any changes in your data files while they're on the RAM drive, be sure to save the data files to a floppy or hard disk before turning off your computer. If you don't save them to a floppy or hard disk, you'll lose all your changes. See Appendix C to find out how to copy from the RAM drive to disk.

About ProDOS Pathnames

Beware of Bum Steers. Don't panic when you read this, but it's important that you enter the pathnames of your ProDOS files correctly. The pathname tells the computer where to find the file that you want copied to the RAM drive at startup.

Here are a few things to remember when entering pathnames in the ProDOS file Autocopy Selection screen:

1. A pathname tells the computer where to find the file that you want copied to the RAM drive at startup

2. A pathname is a series of names preceded and separated by slashes like this: /

3. There are three kinds of names:

A **Volume** name tells the computer what disk the file you want copied to the RAM drive is on

A **Directory** name tells the computer what directory the file you want copied to the RAM drive is in

A **File** name tells the computer the name of the file you want copied to the RAM drive

4. The syntax of a pathname is:

/Volume name/Directory name/File name

If the file is in the root directory, the syntax of the pathname is:

/Volume name/File name

Setting Your RAM/Startup Characteristics

Once you have given The RAM Enhancement Kit your instructions about the Pinpoint Accessories and ProDOS files you want autocopied to the RAM drive at startup, you will want to tell The RAM Enhancement Kit other characteristics about the RAM drive you want it to create. These characteristics include RAM card type, RAM drive size, startup file location, and exit file location.

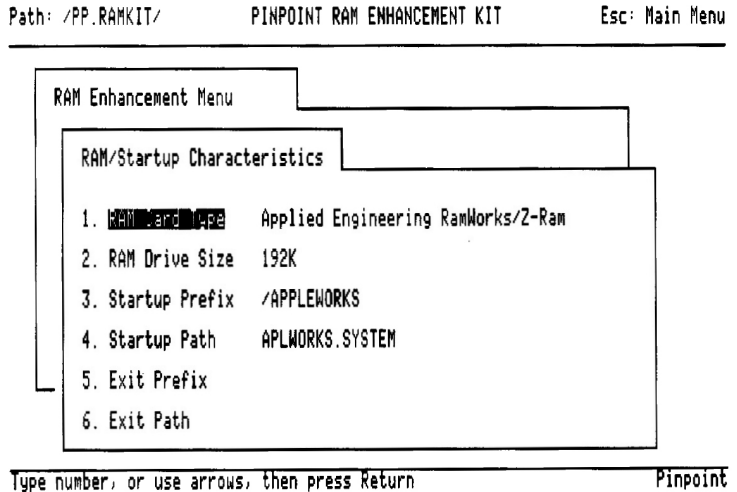
You can specify your RAM card type and other characteristics by choosing the "Set RAM/Startup Characteristics" option on the RAM Enhancement Menu.

To specify your RAM card and other characteristics of the RAM drive:

1. Select the "Set RAM/Startup Characteristics" option from the RAM Enhancement Menu (please see figure 3.1)

The RAM/Startup Characteristics Screen will appear.

Figure 3.4
RAM/Startup Characteristics
Screen



The RAM/Startup Characteristics screen lets you decide if you want to:

1. Tell The RAM Enhancement Kit what kind of RAM card you have so the PREBOOT.SYSTEM file can correctly handle the instructions you give it about the RAM drive

*Please see “**RAM Card Type**” for complete instructions.*

2. Tell The RAM Enhancement Kit how big you want your RAM drive to be

*Please see “**RAM Drive Size**” for complete instructions.*

3. Give the PREBOOT.SYSTEM file general directions to the application you want to run, such as AppleWorks, once the RAM drive has been set up
4. Give PREBOOT.SYSTEM file more specific directions to the application you want to run, such as AppleWorks, once the RAM drive has been set up

*You will not have to change the settings described in #3 and #4 unless you are installing the PREBOOT.SYSTEM file on a startup disk other than AppleWorks’, or if you are installing the PREBOOT.SYSTEM file on a hard disk or high capacity disk such as Apple’s Unidisk 3.5. Please see “**Startup Prefix/Path**” for complete instructions.*

Chapter 3

The RAM Enhancement Kit

5. Give The RAM Enhancement Kit general directions to the application or program switcher you want to use when you leave AppleWorks
6. Or, give The RAM Enhancement Kit more specific directions to the application or program switcher you want when you leave AppleWorks

You will only change the settings described in #5 and #6 if you are using The Ram Enhancement Kit with Quark Catalyst, International Solutions Mouse-desk, AST Research SprintDisk, or the Apple II Memory Expansion Card. Please see “Exit Prefix/Path” for complete instructions.

It's easy to choose one of the five options on the RAM/Startup Characteristics screen:

1. Type the number preceding the desired option, or use the ARROW keys to move the highlighting cursor to the desired option
2. And press RETURN

If you choose an option and want to get back to the RAM/Startup Characteristics screen:

1. Press ESCAPE

RAM Card Type

Pick a Card, any Card. Well, almost. The RAM Enhancement Kit gives you a choice of four RAM cards that you can use.

To specify a RAM card:

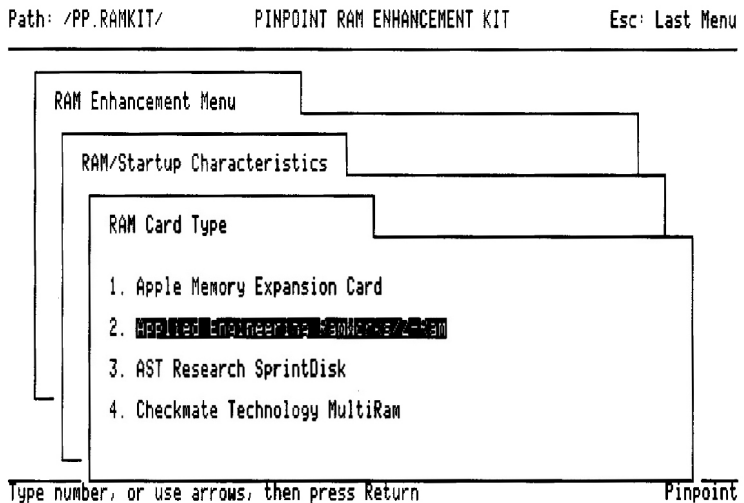
1. Choose the “RAM Card Type” option on the RAM/Startup Characteristics screen (please see figure 3.4)

The RAM Card Type screen will appear.

Chapter 3

The RAM Enhancement Kit

Figure 3.5
RAM Card Type Screen



Now:

1. Type the number preceding your RAM card, or use the **ARROW** keys to move the highlighting cursor to your RAM card
2. And press **RETURN**

When you are done specifying your RAM Card:

3. Press **ESCAPE** to exit back to the RAM Card Characteristics Screen

RAM Drive Size

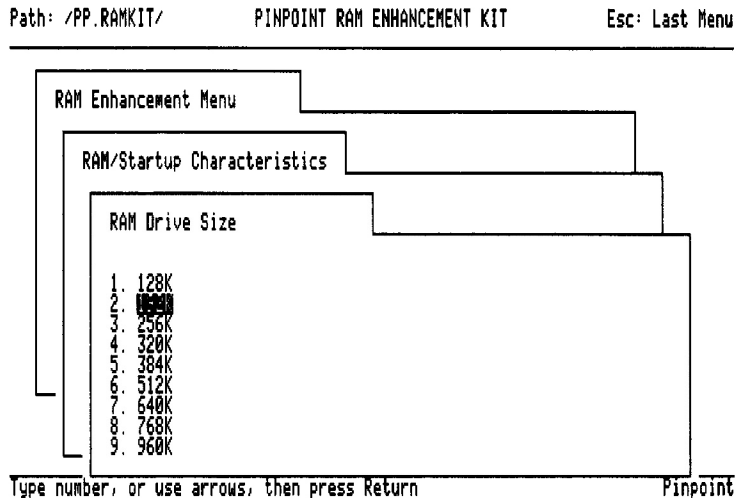
One Hand Giveth, The Other Hand Taketh Away. That's how it works. The bigger you make your RAM drive, the smaller the AppleWorks desktop becomes. Consider The RAM Enhancement Kit as the Robin Hood of RAMwood forest. It robs memory from the memory rich AppleWorks desktop and gives memory to the memory poor applications you want loaded on the RAM drive. **You do not specify a RAM drive size if you have an Apple II Memory Expansion Card or an AST Research SprintDisk.**

To choose your RAM drive size:

1. Select the "RAM Drive Size" option on the RAM/Startup Characteristics screen (please see figure 3.4)

The RAM Drive Size Screen will appear.

Figure 3.6
RAM Drive Size Screen



To choose a size:

1. Type the number preceding the desired size, or use an **ARROW** key to move the highlighting cursor to the desired size
2. And press **RETURN**

When you have selected the RAM drive size:

3. Press **ESCAPE** to exit back to the RAM/Startup Characteristics Screen

It may be tempting, but you should be careful about how big you make your RAM drive. First of all, the bigger you make your RAM drive, the smaller your AppleWorks' Desktop becomes. See appendix A for a table depicting the relationship between RAM drive size and AppleWorks desktop size when using an Applied Engineering RAM card. You might use the ProDOS Filer to find out the sizes of the files you want to copy to the RAM drive. Adding up all the sizes will give you an idea of how big to make your RAM drive. The original set of Pinpoint Desktop Accessories and a work file will fit nicely within 192K. As you add new Pinpoint Desktop Accessories, such as the Pinpoint Spell Checker, this size

may have to be increased.

In any case, trying to create a RAM drive larger or equal to the available memory will crash your computer or result in an error message: Invalid RAM Size!

Startup Prefix/Path

Choosing a Pathname Less Travelled By. This manual takes you and your RAM Enhancement Kit on a safe journey to a Pinpoint-ready AppleWorks Startup disk that creates a RAM drive to your exact specifications. Now if you're one of those people who gets a piece of software and immediately tries to do something outrageous with it, more power to ya, you're our kind of people! That's one reason we've made it possible for you to change all the default settings in The RAM Enhancement Kit. Another, more mundane reason is that not everyone has the same hardware configurations.

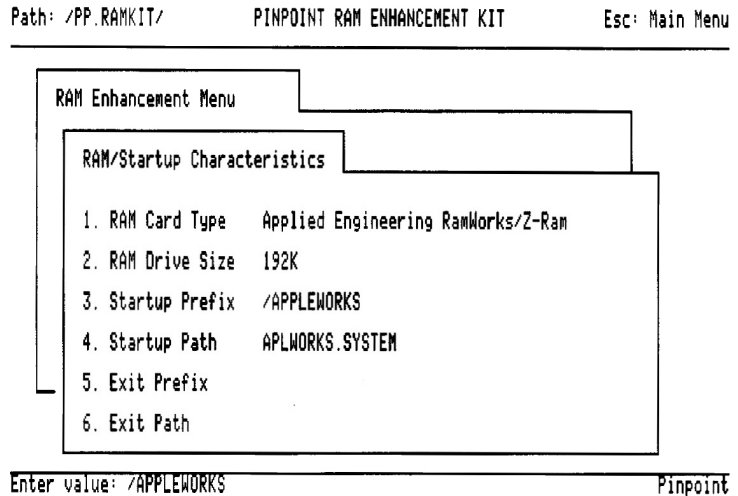
If you've installed AppleWorks on a hard or high capacity disk, and you want to put the PREBOOT.SYSTEM file containing your specifications for the RAM drive on AppleWorks, you would leave the Startup Path as it is, and change the Startup Prefix to the volume and directory of the hard or high capacity disk that contains AppleWorks. If you put the PREBOOT.SYSTEM file in AppleWorks on a hard or high capacity disk, it will not act as a startup file because you may not want to use AppleWorks every time you boot your hard or high capacity disk. You would issue a command from ProDOS to run the PREBOOT.SYSTEM file. For you experimenters out there, changing the Startup Path will put the PREBOOT.SYSTEM file into a different volume or subdirectory. For an explanation of "volume," "directory," and "file," please see "About ProDOS Pathnames."

To specify a different volume and directory location for the PREBOOT.SYSTEM file, start by:

1. Selecting the "Startup Prefix" option on the Set RAM/Startup Characteristics screen (please see figure 3.4)

An "Enter Value" prompt will appear at the bottom of the screen.

Figure 3.7
“Enter Value” Prompt



To change the startup Prefix:

1. Enter the new prefix next to the “Enter Value” prompt at the bottom of the screen. Start the prefix with a slash like this, /
2. And press RETURN

To change the Startup Path:

1. Select the “Startup Path” option on the Set RAM/Startup Characteristics screen (please see figure 3.4)

An “Enter Value” prompt will appear at the bottom of the screen (please see figure 3.7).

2. Enter the new path next to the “Enter Value” prompt at the bottom of the screen. Do not start the path with a slash like this, /
3. And press RETURN

Exit Prefix/Path

Installing a Program Switcher A program switcher, such as the RAM Switcher included with the RAM Enhancement Kit, serves as a front end to steer you to

Chapter 3

The RAM Enhancement Kit

the different programs you load on the RAM drive. You will use the "Exit Prefix" and the "Exit Path" options on the RAM/Startup Characteristics Screen to install your program switcher.

It's easy to change the "Exit Prefix" and the "Exit Path":

1. Select the "Exit Prefix" or the "Exit Path" option on the Set RAM/Startup Characteristics screen (please see figure 3.4)

An "Enter Value" prompt will appear at the bottom of the screen (please see figure 3.7).

2. Enter the new prefix or path next to the "Enter Value" prompt at the bottom of the screen. Start the prefix with a slash like this, /. Do not start the path with a slash like this, /
3. And press RETURN

This section will show you how to use three different program switchers with different RAM cards:

- A. The RAM Switcher included with The RAM Enhancement Kit, with an Applied Engineering RAM Card
- B. The RAM Switcher included with The RAM Enhancement Kit, with the AST Research SprintDisk, or the Apple II Memory Expansion Card
- C. The Quark Catalyst 3.0
- D. And the International Solutions Mousedesk.

The RAM Switcher with an Applied Engineering Card

A. If you plan to use The RAM Switcher included with The RAM Enhancement Kit and you have an Applied Engineering RAM Card:

1. Enter /RAM for the "Exit Prefix" and RAM.SWITCHER for the "Exit Path" on the RAM/Startup Characteristics Screen (please see figure 3.4)
2. Use the ProDOS Filer or the System Utilities Disk to copy The RAM Switcher file found on The RAM Enhancement Kit Disk, /PP.RAMKIT/RAM.SWITCHER, to the following pathname on the AppleWorks Startup disk, /APPLEWORKS/RAM.SWITCHER

The RAM Switcher with an AST SprintDisk or Apple II Memory Expansion Card

3. Include the pathname, /APPLEWORKS/RAM.SWITCHER, with the other pathnames on the ProDOS File Autocopy Selection Screen (please see figure 3.3)

B. If you plan to use The RAM Switcher included with The RAM Enhancement Kit and you have the AST Research SprintDisk or the Apple II Memory Expansion Card:

1. Change the Exit Prefix to /RAMx, with x being equal to the slot in which your RAM Card resides
2. Use the ProDOS Filer or the System Utilities Disk to copy The RAM Switcher file found on The RAM Enhancement Kit disk, /PP.RAMKIT/RAM.SWITCHER, to the following pathname on the AppleWorks Startup disk, /APPLEWORKS/RAM.SWITCHER
3. Include the pathname ./APPLEWORKS/RAM.SWITCHER, with the other pathnames on the ProDOS File Autocopy Selection Screen (please see figure 3.3)

The Quark Catalyst

C. If you're using The Quark Catalyst 3.0:

1. Leave the Exit Prefix and Exit Path blank

If you want to use The Quark Catalyst to boot the modified AppleWorks startup disk created by The RAM Enhancement Kit, the preboot file on the modified AppleWorks startup disk that creates the RAM drive, PREBOOT.SYSTEM, will not be run if you select "AppleWorks" as the program to run. The reason for this is Catalyst thinks the AppleWorks Startup file is "/VOLUME NAME/APPLEWORKS/APPLEWORKS." because catalyst renames the original AppleWorks startup file from "APLWORKS. SYSTEM" to "APPLEWORKS.". You will have to "Add a Program" to the Catalyst list, and have the system file be PREBOOT.SYSTEM under whatever sub-directory you have AppleWorks installed.

The International Solutions Mousedesk

D. If You're Using The International Solutions Mousedesk:

1. Leave the Exit Prefix and Exit Path blank

If you want to use Mousedesk to boot the modified AppleWorks startup disk created by The RAM Enhancement Kit, the program to be run should be PREBOOT.SYSTEM rather than "APPLEWORKS.SYSTEM."

Chapter 3

The RAM Enhancement Kit

Creating a Startup Disk

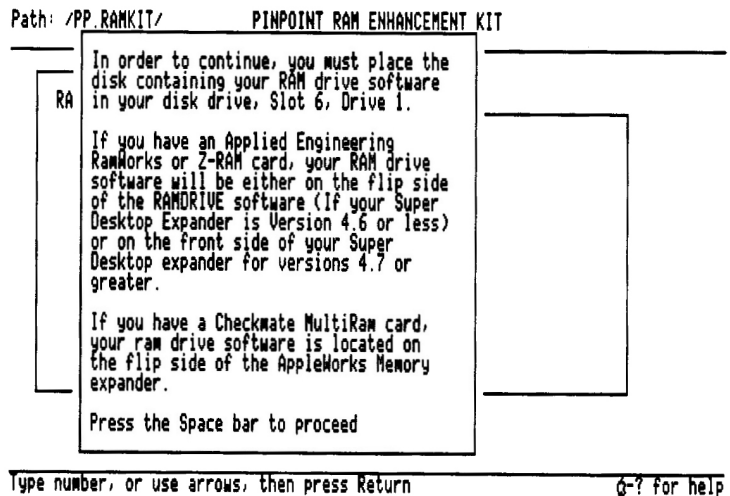
When you are satisfied with the Desktop Accessory Autocopy Selection, ProDOS Autocopy Selection, and the RAM Startup Characteristics settings, you can create a startup disk by selecting the “Create a Startup Disk” option on the RAM Enhancement Menu.

To create a startup disk:

1. Select the “Create a Startup Disk” option on the RAM Enhancement Menu (please see figure 3.1)

The Insert RAM Drive Software prompt will appear. (If you have an Apple II Memory Expansion Card, or an AST Research SprintDisk, the Insert Disk To Be Modified Prompt will appear instead of the Insert RAM Drive Software Prompt. In this case, please skip ahead to figure 3.9 and follow the directions that follow figure 3.9).

Figure 3.8
Insert RAM drive Software
Prompt



Now:

1. Insert the disk containing the RAM drive software in Slot 6, Drive 1 of your computer

Applied Engineering software: If you have version 3.3 or 3.4 of

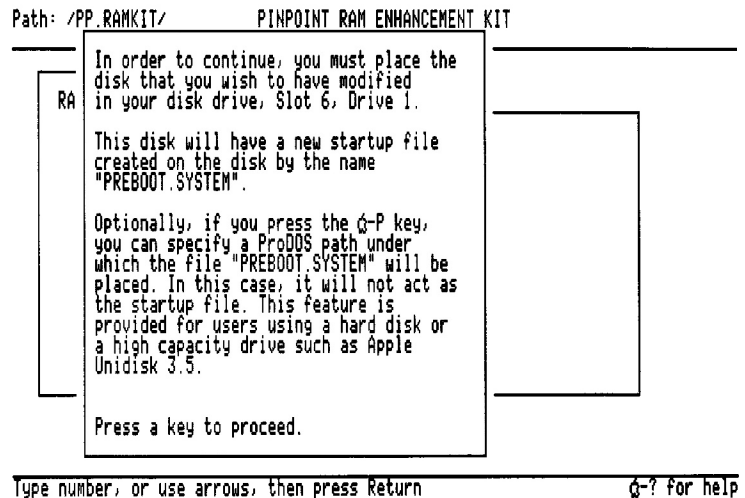
RAMDRIVE, the file you need to insert at this time, /Prodrive.io/Prodrive, is on the flip side of the disk. If you have version 4.7 of The Super Desktop Expander, it contains the /Prodrive file that you need.

Checkmate Technologies software: If you have a Checkmate MultiRam RAM card, you'll need a 4.3 version of their AppleWorks expander. The flip side has the RAM drive software you need to insert at this time.

2. And press any key to continue

The Insert Disk You Wish to Have Modified Prompt will appear.

Figure 3.9
Insert Disk You Wish To
Have Modified Prompt



Now:

1. Insert the disk you wish to have modified, typically your Pinpoint-ready, expanded AppleWorks disk, in Slot 6, Drive 1 of your computer
2. And press any key to continue

Or, for those of you using hard or high capacity disks:

1. Press the OPEN-APPLE P keys

Chapter 3

The RAM Enhancement Kit

2. And enter at the "Enter Value" prompt (please see figure 3.7) the ProDOS path under which the PREBOOT.SYSTEM file should be placed

Then

3. Press any key to continue

The Disk Drive Light will Flicker

The disk drive light will flicker for a while. When it is no longer flashing, your Startup Disk will be ready.

Using Your Startup Disk

The Hay is in The Barn. You and the RAM Enhancement Kit have done all the work you have to. Now it's time to reap the benefits. It's easy to use your startup disk.

To use your startup disk:

1. Place your startup disk in a drive
2. And turn on your computer

If everything goes without a hitch, your computer will:

1. Display two screens very briefly that tell you the additional memory has been recognized
2. Start copying your ProDOS files to the RAM drive
3. Display another screen telling you that the additional memory has been recognized and that the Pinpoint accessories will now be copied to the RAM drive
4. And move you to the AppleWorks opening screen

If there is a problem, the computer will:

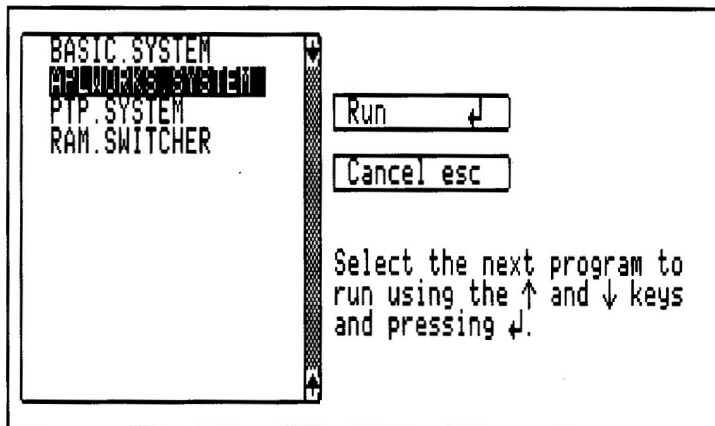
1. Display one of the error messages listed in Appendix B. Consult Appendix B. for definitions of the error messages you may encounter

Using The RAM Switcher

If you are using the RAM Switcher included on The RAM Enhancement Kit disk, then the RAM Switcher will take control when you exit AppleWorks. It will search the RAM disk for any program files. If it doesn't find any program files,

you will exit to ProDOS. If The RAM Switcher does find program files, the RAM Switcher will appear.

Figure 3.10
The RAM Switcher



It's easy to use the RAM Switcher:

1. Use an **ARROW** key to move the highlighting cursor to the desired program
2. Press **RETURN**

Or:

1. Press the **ESCAPE** key to exit to ProDOS

It's been fun!

Well, that's all the instruction you get for this sample version of the RAM Switcher. When the real RAM switcher is finished, they may be crazy enough to let me write the manual for it. But for now, your final instructions:

1. Turn off your Apple and put your disks away
2. Wash your coffee cup
3. Call your sweetheart

Chapter 3

The RAM Enhancement Kit

4. And head for home

For those of you who are already at home:

1. Don't bother with your coffee cup, just go find your sweetheart

Appendix A

RAM Size vs. AppleWorks Desktop Size*

RAM Card Size(K)	RAM Disk Size(K)	Desktop size(K)
256	128	93
	192	45
512	128	283
	192	235
	256	188
	320	140
	384	93
768	128	473
	192	425
	256	378
	320	330
	384	283
	512	188
1024	640	93
	128	663
	192	615
	256	568
	320	520
	384	473
	512	378
	640	283
	768	188
	960	45

You do the math now; add more RAM up to four megabytes! Subtract 31K if you're using version 5.0 or later of Applied Engineering's Super Desktop Expander.

*With an Applied Engineering RAM Card in an Enhanced Apple IIe

Appendix B

Error Messages

The following messages can appear when running the startup disk created by The RAM Enhancement Kit:

Preboot Requires at least 256K auxiliary memory.

In order for the preboot logic to work correctly, your memory card must contain at least 256k.

Attempting to set the Startup Prefix to “/PATHNAME”. Please insert the corresponding volume in a drive.

Once the preboot logic has been completed, a default path setting is made. If the corresponding volume is not inserted in a disk drive, then this message appears. The user should place in a disk drive the disk containing the Startup Prefix. Should an invalid prefix be entered, the user can press ESCAPE to terminate.

Attempting to run Startup Program, “Program Name”. Please insert the corresponding volume in a drive.

The default prefix has been successfully set. Now the computer is trying to run the program defined as the startup program.

Pinpoint has not been installed on AppleWorks

Pinpoint must be installed on AppleWorks in order to gain control from the pre-boot logic. If it is not, the user should press a key to abort the preboot logic.

Invalid Desktop Expander

In order for Pinpoint and AppleWorks to run correctly using the Applied Engineering or Z-Ram card, or the CheckMate Multi-Ram, the correct version of the Desktop Expander must be used. If using an Applied Engineering card, version 4.3 or greater of the Super Desktop Expander is required. If using a Checkmate card, then version 4.1 or greater of the AppleWorks Memory Expander is needed.

Attempting to copy file "PATHNAME". Please insert the corresponding volume in a drive.

A ProDOS file that is to be copied to the RAM drive at startup cannot be located. Typically, the user should place the appropriate disk in the drive. By pressing ESCAPE, the copy logic will bypass that file.

File "PATHNAME" too large for RAM drive.

The ProDOS file to be copied at startup is bigger than the RAM drive. Therefore, it cannot be copied to the RAM drive. Pressing any key will bypass this copy attempt. If you are using an Applied Engineering or CheckMate RAM card, you can alter your RAM drive allocation for greater memory size. This will take away from your AppleWorks Desktop space, however.

Disk I/O Error!

A disk input/output error has occurred. The preboot logic is aborted. Check your disk drives, disks, etc.

Extended Memory Card Not Detected.

User specified an Apple Memory Card, or AST SprintDisk. The device cannot be located.

Invalid RAM Size!

User attempted to allocate a RAM drive larger than the available RAM. The RAM drive size should be less than the available RAM.

Preboot Exited Prematurely. Press a key.

Something happened to mess things up. Press a key.

Manual Not Read

User should Read the User Manual before resorting to Technical Support.

Check Not In The Mail

For the user's convenience, this disk is not copy protected. Please do not copy this program to give to other users; it's really not that expensive. To register for new Pinpoint products, please send in the User Registration Card you received when you bought the Pinpoint Desktop Accessories if you have not already done so.

Appendix C

Copying Data Files from the RAM Drive to Disk.

When you have finished making changes in the data files that you loaded onto the RAM drive you will want to copy these data files to a floppy, hard, or high capacity disk before turning off your computer so you don't lose all your changes when you turn off the computer. It is highly recommended that you load to the RAM drive only those data files that are not changed too often. Here's one way to copy data files from the RAM drive to a disk.

To copy data files from the RAM drive to disk:

1. Install The RAM Switcher and specify it as the exit program on The RAM Enhancement Kit Disk. (please see "Exit Prefix/Path: Installing a Program Switcher")
2. Include the ProDOS filer program, "/Volume name/Filer/," as one of the files on the ProDOS Autocopy Selection Screen (please see "Choosing ProDOS files for the RAM drive")
3. Select "filer" with The RAM Switcher when you exit AppleWorks (please see "Using The RAM Switcher")

When The RAM Switcher has switched you to the ProDOS filer:

4. Type F for "File Commands" and press RETURN
5. Type C for "Copy Files" and press RETURN

6. Specify the source pathname as “/RAM/x,” with x being equal to the name of the data file you want to copy to disk. Press RETURN
7. Specify the target pathname as “/Volume Name/x,” with x equal to the name of the data file you want to copy to disk. Press RETURN

If everything worked, you will see a “Copy Complete” message near the bottom of the screen.

Appendix D

Using a Z RAM Board with an Applied Engineering System Clock

These instructions apply if you have an Apple IIc.

To use the Applied Engineering or Creative Peripherals Unlimited Inc., system clock:

1. Run the Applied Engineering and Creative Peripherals Unlimited Inc., AppleWorks patches which include Super Desktop Expander, and Clockworks
2. Install Pinpoint onto the AppleWorks you modified in step 1
3. Run the RAM Enhancement Kit on the AppleWorks you modified in steps 1 and 2
4. Boot the Applied Engineering or Creative Peripherals Unlimited Inc., system clock software and install "clock.system" on the modified AppleWorks you creative in steps 1, 2, and 3

If you are having problems, please contact Applied Engineering at (214) 241-6060. Or contact Creative Peripherals Unlimited at (800) 228-1165.

Appendix E

Other Pinpoint Products

Other Pinpoint Products

Pinpoint Apple IIe Upgrade Kit \$29.00

- ▲ Permits Pinpoint and many 'new' Apple IIe software programs to run on plain Apple IIe with 128K
- ▲ Solves many of the compatibility problems older software programs have with the Enhanced Apple IIe
- ▲ Includes Mouse Text Video ROM, exact copy of Apple's Character Generator ROM #342-0265 approved by Apple
- ▲ Includes GTE or Rockwell 65C02 microprocessor
- ▲ Does NOT include Apple's proprietary 'CD' and 'EF' ROMs required for most mouse-based software. This Kit does not "Enhance" the Apple IIe. This Kit is only to be used on Apple IIe's
- ▲ This upgrade is performed at users' own risk
- ▲ Handy chip puller included

Pinpoint RAM Enhancement Kit \$29.00

- ▲ Configures partitioned RAM disks

Other Pinpoint Products

- ▲ Automatically uploads non copy protected ProDOS applications and files to partitioned RAM disks
- ▲ Menu driven setup. Catalog with toggles displays programs/files to be uploaded.
- ▲ Includes a ProDOS RAM switcher for AppleWorks with Pinpoint and other ProDOS applications uploaded into RAM, such as Business Works accounting software, Point-to-Point communications software, or InfoMerge mail merge and print formatting program
- ▲ Requires Pinpoint Desktop Software

Pinpoint Modem Enhancement Kit \$29.00

- ▲ Advanced modem software enhancement for Pinpoint's Communications Window
- ▲ Logon macros with default communications setups
- ▲ Keyboard and video character remapping, simple file encryption program
- ▲ Selective character filtering
- ▲ Required for Novation, Microcom and other non-standard external/internal modems or interface cards
- ▲ Contact Pinpoint for details
- ▲ Requires Pinpoint Desktop Software

Pinpoint Printer Enhancement Kit \$8.00

- ▲ Advanced installation utilities for non-Apple standard printers and interface cards
- ▲ Simultaneous text and graphics printing
- ▲ Epson FX, RX, LX, and MX-80 with GraphTrax; Okidata 84, 92, 93, 192; H-P Thinkjet; Panasonic KX P1091, Smith-Corono D-200, Star Micronics SD-10

and SG-10 printers with standard interface cards, require the Pinpoint Printer Enhancement Kit to print graphics and text

- ▲ Printer interfaces supported include: Generic BASIC Standard, Generic Pascal 1.1 Standard, Orange Micro Grappler Serial and Grappler Parallel Cards, Star Micronics Grafstar and Grafstar II, Microtek Dumpling 64, Dumpling-GX, and RV-611C, Interactive Structures PKASO/U, and RC Systems Slot Buster
- ▲ Contact Pinpoint for details
- ▲ Requires Pinpoint Desktop Software

Micro Cookbook \$49.95

- ▲ Big 8th Edition. Over 100,000 copies sold
- ▲ Ask the computer what's for dinner. Enter ingredient, nationality, course or whatever, and Micro Cookbook offers up a menu with delicious possibilities
- ▲ Choose from Micro Cookbook's 150 tested recipes (supplied on the program disk) or add your own
- ▲ Selects recipes from any individual recipe disk or path, or automatically searches up to 8 others - over 4,000 recipes online for instant recall
- ▲ Automatically adjusts recipes for different serving sizes
- ▲ Automatic shopping list preparation
- ▲ Valuable on-line reference: nutrition facts, food selection and storage, and ingredient substitution suggestions
- ▲ Lightning fast operation with unparalleled ease of use
- ▲ Fourth-generation, bit-mapped database design finds plurals, truncations, multi-variant relations (7 simultaneous index keys), overlooks request errors, and generally works hard so you don't have to
- ▲ Versions available for Apple II (64K DOS 3.3), Apple IIc/IIe (128K DOS 3.3), Apple IIc/Enhanced Apple IIe with 128K (ProDOS), Commodore 63/128, and IBM PC, XT and jr.

Optional Recipe Disks \$19.95 to \$29.95

- ▲ How smart cooks eat better and waste less
- ▲ Optional recipe disks, over 3,000 exciting recipes, add variety to your menu
- ▲ Crowd-pleasing favorites include:

- Appetizers
- Holiday Meals
- Desserts
- Soups & Salads
- Food Processor Cooking
- Meatless Meals
- Wok Cooking
- Kids Cookery
- California Beef
- Breads & Spreads
- Microwave Cooking
- Daily Bread & Beyond
- Daily Bread & Beyond, Food Processor
- Special Diets (includes food allergies)
- ...and more on the way!

New for Spring 1986

InfoMerge \$79.00

On-screen, direct-print, mail-merge and print formatting program that works with AppleWorks. Automatically select names from AppleWorks database, or manually scan files forward/backward, add multiple keyboard inputs (great for invoices/forms), preview on screen before printing, or just print everything. One copy each or one-hundred or mix-and-match. Presto!

Optionally, print to disk files for use by other programs, such as telecommunications software like Point-to-Point or Pinpoint Communications Window. Pop up any Pinpoint Desktop Accessory for added functionality.

Point-to-Point \$125.00

Powerful telecommunications program features the AppleWorks file card interface. Amazing "wait for text" and timed event conditional macros automate communications tasks. In fact, Point-to-Point has an applications programming language built right in. XMODEM binary and AppleWorks/Text file transfers supported, including 300-2400 Baud modem support! Direct connect local file transfers to 9600 Baud. Contact Pinpoint for details.

Pop-up any Pinpoint Desktop Accessory for added functionality. Including simultaneous communications sessions under Point-to-Point and Pinpoint's Communications Window!

Pinpoint Toolkit \$49.00

Programmers resource and toolbox for writing Desktop Accessories all your own. Includes several handy desktop accessories for just about anyone, not just for programmers:

- ▲ Accessory mover for adding new accessories anytime
- ▲ Pop-up version of ProDOS Filer
- ▲ Screen printing facilities, text or graphics depending on printer type
- ▲ Enhanced printing for Desktop Appointment Calendars
- ▲ Decimal, Hexadecimal, or Binary Calculator with print tape

Outstanding tools for any serious ProDOS programmer include:

- ▲ Comprehensive Pinpoint Internal Architecture Documentation
- ▲ Video Resource Editor for accessory development and prototyping
- ▲ Pinpoint's newest interactive desktop environment, RUN-RUN, for expanded limited multi-tasking capabilities
- ▲ Commented source code to several Pinpoint Desktop Accessories provided as programming examples
- ▲ Programmer utilities require 256K or greater Enhanced Apple IIe or Apple IIc, ProDOS Assembly Language experience, or use of MICOL BASIC, or

Appendix E

Other Pinpoint Products

KYAN PASCAL

▲ Contact Pinpoint for more information.

Contact Pinpoint for complete product information and scheduled release dates.

Index

Index

	/ACCESSORY/APPOINTMENTS.PP	3.7
	/ACCESSORY/LOGONMAC.PP	3.7
A	Accessory Autocopy Selection Table	3.4
	AppleWorks	1.1
	AppleWorks Desktop Size	3.4
	Applied Entgineering's Super Desktop Expander	1.3, 2.1, 2.2, 3.17
	Appointment Calendar Data File	3.7
	AST Research SprintDisk	1.3, 1.4
B	Booting the RAM Enhancement Kit	3.2
C	Catalyst	3.16
	Checkmate Technologies RAM Cards	1.3, 1.4
	Choosing ProDOS Files for the RAM Drive	3.5
	Choosing Your Pinpoint Accessories	3.3
	Communications Phone Directory Data File	3.7
	Copying Data Files from the RAM Drive to Disk	C.1
	Creating a Startup Disk	3.17
D	Data Files	3.5
	Deleting Text	3.6
	Descriptive Name Column	3.4
	Desktop	1.1, 3.4
	Directory Name	3.8
E	Exit Prefix/Path	3.14
	Expanding AppleWorks	2.1
F	Figures	iii
	File Name	3.8
	Filer	2.2, C.1

Index

H	Hard or High Capacity Drives	3.18
	Hardware	1.3, 1.4
	Help	3.3
I	I/O Error	B.1
	Input/Output Error	B.1
	Installing Pinpoint on the Expanded AppleWorks Startup Disk	2.2
	International Solutions Mousedesk	3.16
	Invalid RAM Size	3.11, 3.12, B.1
M	Mailing Addresses	iv
	Manufacturers of RAM Cards	1.3
	Mousedesk	3.16
	MultiRam	1.3
N	Non Copy-Protected Disks	iv
	Non Write-Protected Disks	3.1
O	OPEN-APPLE P	3.18
	Overstrike Mode	3.6
P	Partitions	1.1
	Pathnames	3.8
	Pinpoint Desktop Accessories	3.3
	PREBOOT.SYSTEM	3.1
	Prefix/Path	3.9
	ProDOS Filer	2.2, C.1
	ProDOS Files	3.5
Q	Quark Catalyst	3.16
R	RAM	1.1
	RAM Card Type	3.10
	RAM Drive Size	3.11
	RAM Drive Software	1.3
	RAM Enhancement Menu	3.2
	RAM Size vs. AppleWorks Desktop Size	3.12, A.1
	RAM Switcher	3.14, 3.15, 3.16
	RAM Resident	1.1
	RAM/Startup Characteristics	3.8
	RAMdrive	1.4

Index

	RamWorks	1.4
	Random Access Memory	1.1
	Reference Files	3.5
	Root Directory	3.8
S	SprintDisk	1.3, 1.4
	Startup Path	3.13
	Startup Prefix	3.13
	Subdirectory	3.8
	Setting Your RAM/Startup Characteristics	3.8
	Switchers for RAM Resident Applications	3.14, 3.15, 3.16
T	Technical Support	iv
	Text Entry-Edit Keys	3.6
U	UniDisk	3.18
	Using a Z-RAM Board with an Applied Engineering Clock	D.1
	Using the RAM Switcher	3.19
	Using Your Startup Disk	3.19
V	Volume Name	3.8
W	Write-Protected Disks	3.1
Z	Z-RAM	1.3, 1.4

*Pinpoint Publishing
5901 Christie Ave.
Emeryville, CA 94608
(415) 654-3050
Telex 245-8579 MCI
CompuServe 76244,123*

*P.O. Box 13323
Oakland, CA
94661-0323*

