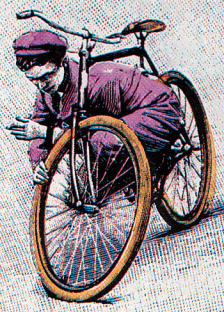
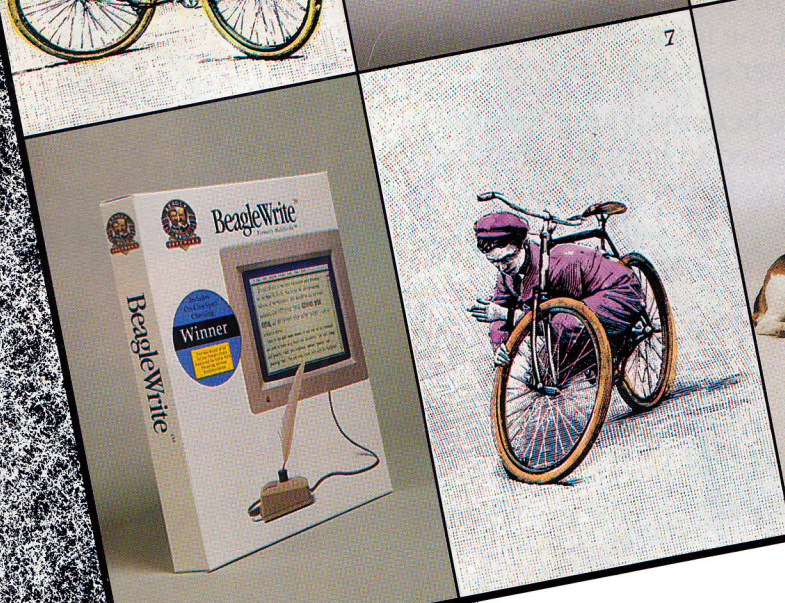
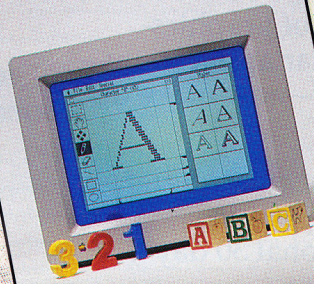
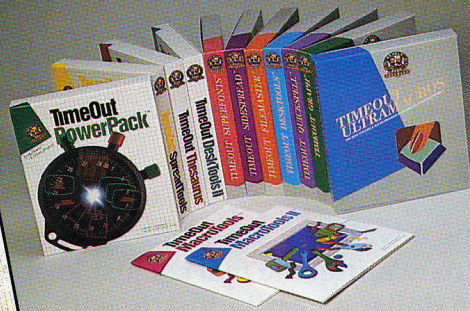
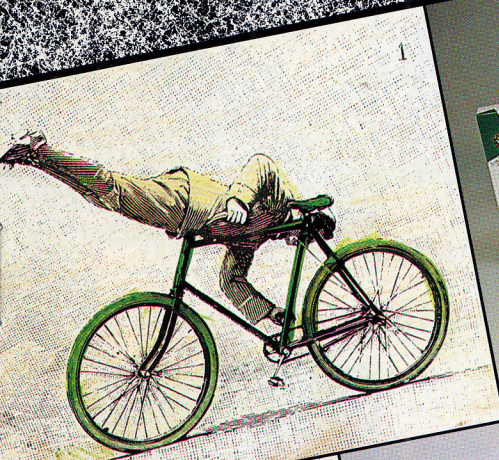


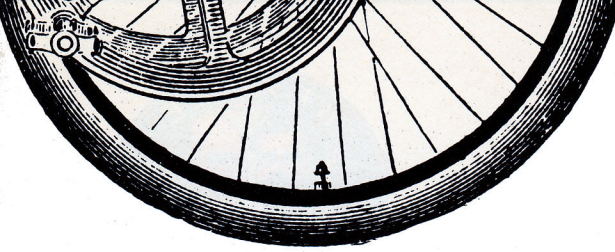
Fall/Winter 1989



Unleash the PowerSM



Beagle Bros
Apple II Software Catalog



We Believe in the Apple II

Many software companies are taking a wait and see attitude toward the Apple II. And while they're waiting, the market just keeps growing. The Apple II is now a billion dollar a year industry, with over 5 million Apple II's manufactured.

While the others were waiting, Beagle Bros became the leader in Apple II productivity software with the TimeOut series: the most powerful, most complete set of productivity tools anywhere. We pushed back the limits of what the Apple II can do, setting new industry standards in the process.

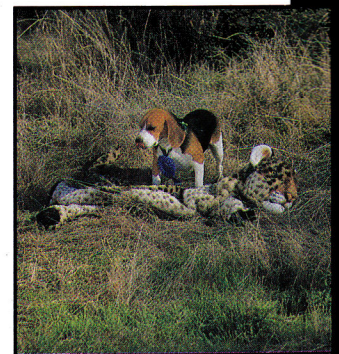
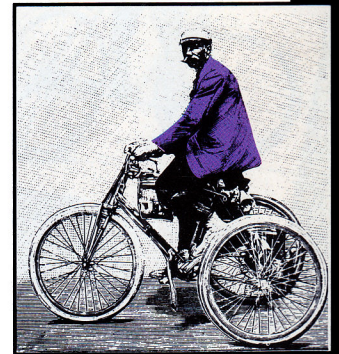
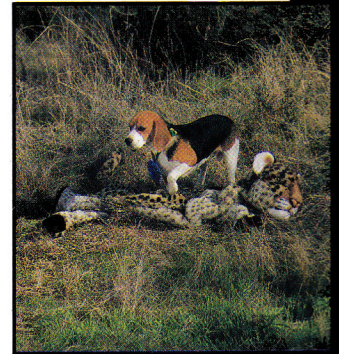
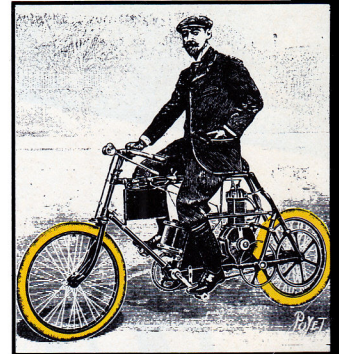
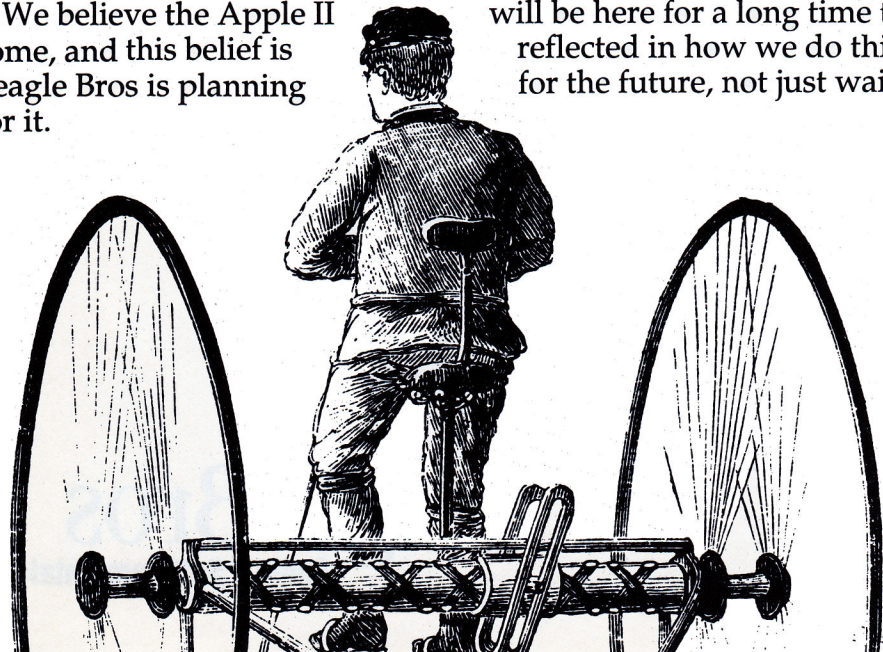
Beagle Bros is the new home of the StyleWare line of graphics-based productivity programs. These extremely popular applications—including MultiScribe, MultiScribe GS and TopDraw—now make up the Beagle Series.

All of the programs in the Beagle Series have been updated and revised. We are selling them just the way we offer all of our products—with no copy protection and an unconditional 30 day guarantee.

But great software alone is not enough to develop satisfied customers. So we've worked hard to build the finest reputation around for friendly, knowledgeable customer service.

We believe the Apple II come, and this belief is Beagle Bros is planning for it.

will be here for a long time to reflected in how we do things. for the future, not just waiting



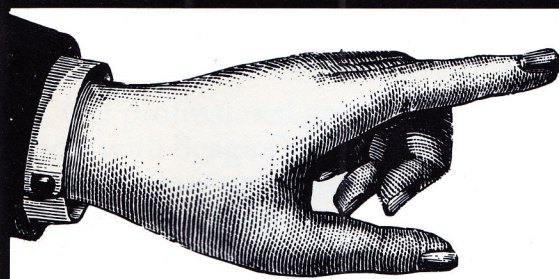


Table of Contents

Beagle Bros Apple II Software Catalog

The Beagle Series for the Apple IIGS

BeagleWrite GS	4
BeagleDraw	5
GS Desk Accessories	5
Clip Art Vol. 1	6
Font Library Vol. 1	6

The Beagle Series for the IIe, IIc, IIc+

BeagleWrite	7
BeagleWrite Desk Accessories	8
BeagleWrite Picture Manager	8
FontPak Vol. 1	9
FontPak Vol. 2	9

The TimeOut Series of AppleWorks Enhancements

TimeOut SuperFonts	10
TimeOut Thesaurus	11
TimeOut QuickSpell	11
TimeOut PowerPack	12
TimeOut DeskTools	12
TimeOut DeskTools II	13
TimeOut ReportWriter	13
TimeOut TeleComm	14
TimeOut FileMaster	14
TimeOut UltraMacros	15
TimeOut MacroTools	15
TimeOut MacroTools II	15
TimeOut Graph	16
TimeOut Paint	16
TimeOut SpreadTools	17
TimeOut SideSpread	17

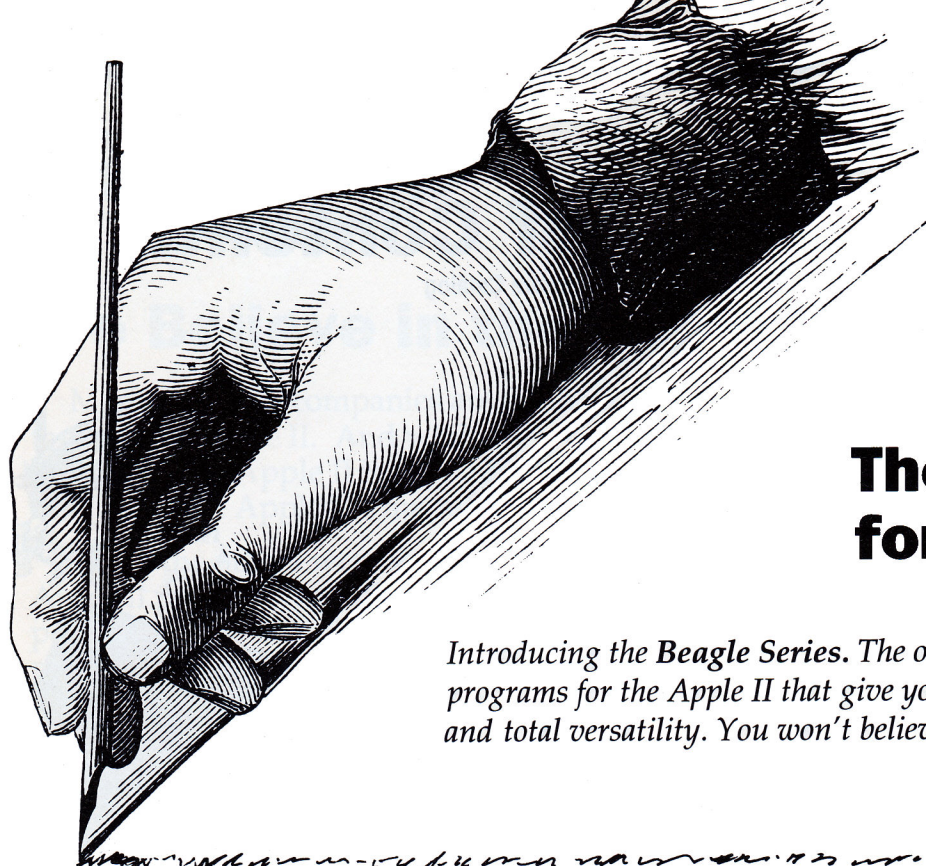
General

Minipix 1, 2, 3	16
GS Font Editor	18
Point-to-Point	19
Program Writer	20
Beagle Compiler	20
TripleDump	21

Ordering Information 22

Order Form 23





The Beagle Series for the Apple IIGs.

Introducing the Beagle Series. The original Macintosh-like productivity programs for the Apple II that give you incredible graphics, beautiful fonts and total versatility. You won't believe you've got the same computer.

BeagleWrite GS

BeagleWrite GS, the latest in word processor technology from Beagle Bros, is the closest thing to Mac software you can run on an Apple IIGS—a world class word processor in the Macintosh tradition.

Pull-down menus and intuitive mouse control make BeagleWrite GS the most elegant, effortless way there is to get your words into print. And do it beautifully—with Macintosh fonts in a rainbow of sizes and colors.

You'll love the speed and efficiency of "What You See Is What You Get" word processing. Your print outs are just as eye-catching as

the screen. BeagleWrite GS has the highest standard of printing possible—in 16 colors on the ImageWriter and near type-set quality on the LaserWriter.

BeagleWrite GS lets you draw lines, ovals and rectangles, too. Graphics can be placed anywhere in a document. You can reshape, and trim your pictures to fit perfectly with your text. And it's compatible with all major IIGS graphics programs.

BeagleWrite GS comes with the Merriam-Webster spelling dictionary and thesaurus. The spelling checker

contains 80,000 words, and offers suggestions based on spelling *and* pronunciation. The on-line thesaurus has over 450,000 synonyms—making it the artistic tool for serious writers!

BeagleWrite GS is the word processor of choice for Apple IIGS owners—unrivaled for home, school and small business use.
\$99.95



BeagleDraw

Get professional graphics tools with BeagleDraw—the leading draw program for the IIGS. BeagleDraw gives you all the power of the Macintosh interface for sophisticated graphics development.

BeagleDraw's object-oriented design sets it apart from paint programs. The advantage of BeagleDraw is precision. First, you create an object: make it any size, color and shape you like. Then use the mouse to move the object where you want it on the screen.

This is similar to Cut and Paste in a paint program, except that BeagleDraw objects are moved independently. Objects can be moved on top of other objects without destroying the background. BeagleDraw makes designing graphics as easy as arranging furniture in a room. You can change the composition with just a click of the mouse.

Objects can be resized and reshaped at any time. You can even duplicate, flip and rotate objects.

Object-oriented graphics print out far better on a LaserWriter than graphics printed with paint programs. ImageWriter II printing is super sharp, even in color.

Your print outs can even be scaled to extremely large sizes—up to 64 pages on an ImageWriter and 1,024 pages on a LaserWriter. That's almost billboard size!

BeagleDraw will complement any IIGS paint program you already own, like Deluxe Paint II or PaintWorks Plus. You can use BeagleDraw to edit and print all of your existing graphics. The accuracy and versatility of BeagleDraw will make it the most important program in your graphics library. **\$89.95**



GS Desk Accessories



GS Desk Accessories is the first set of Macintosh-like desk accessories for the Apple IIGS. Put these tools on your desktop with just a point and click!

GS Desk Accessories enhances all IIGS software—including BeagleWrite GS and AppleWorks GS—with all these new features:

Scrapbook - Combine text and graphics created in different programs.

Macros - Play back frequently repeated phrases with one key press. Speed up *all* your programs.

Phone Filer - Find phone numbers faster than you can pick up a telephone book!

Screen Saver - Prevents burn in by dimming the screen when not in use.

Scientific Calculator - You get all arithmetic and trigonometric functions!

Calendar - Who else will remind you of your dates?

Menu Clock - Puts the time right on the menu bar.

NotePad - Keep up to 8 pages of on-line notes.

Alarm Clock - This alarm even has a snooze button!

Only **\$59.95**.

Clip Art

Beagle Bros Clip Art Library features a collection of exciting graphics that help you get your message across more effectively.

The Clip Art pictures come in four different graphics formats, so you can use them with all your favorite Apple IIGS programs—including AppleWorks GS, BeagleWrite GS, BeagleDraw, PaintWorks Gold, Deluxe Paint II, 8/16 Paint, and Writer's Choice elite.

Just a few of the picture categories contained on the disk are Holidays, Sports, Animals, Faces and Transportation. All together, there are over 120 different Clip Art graphics, including a poster-size multi-color map of the United States!



Antripa

Benningham

Cranston

Apple

BORDERS



Caldon

Dylan Thomas

DOVERfield

Envira

These professional quality graphics let you add just the right touch to your documents—without having to spend hours designing and editing. Beagle Bros Clip Art will make all your home and business correspondence, school reports and newsletters look picture perfect. \$49.95

Font Library

Add new life to all of your Apple IIGS programs with Font Library.

Font Library comes with 90 standard GS fonts in 40 different font families.

There is a wide range of decorative and fancy fonts—even border fonts. These high quality type styles add a professional look to all home and business correspondence.

With the extensive choice of font sizes and styles, you can give your greeting cards, flyers and handouts dramatic visual impact.

The fonts are compatible with all IIGS-specific application programs, including AppleWorks GS, BeagleWrite GS and BeagleDraw. (Even some non-IIGS programs like TimeOut SuperFonts and Publish it! can use Font Library fonts.) Font Library is the nicest thing you can do for your whole collection of IIGS programs. \$49.95

Nashville

Newark

Phantom

Quently

Reston

RUSSELL

Shakespeare

SPACE

Temley

Waugh

Wylie



The Beagle Series for the Apple IIe, IIc & IIc+.

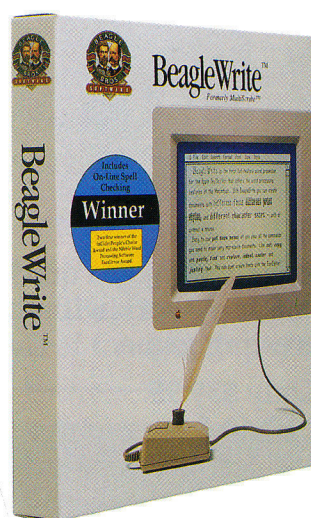
BeagleWrite

BeagleWrite is the finest graphics-based word processor you can buy for the IIe, IIc, and IIc+. It was the inspiration for BeagleWrite GS—and countless other word processors.

The Macintosh-like features of BeagleWrite include a menu bar, dialog boxes and optional mouse control. BeagleWrite's easy operation dramatically cuts down learning time and increases productivity.

You'll be a power user in minutes. All commands are clearly displayed, inviting you to explore the many features of BeagleWrite.

BeagleWrite is a writer's tool. It frees you to



concentrate on your writing—not on how to use the computer. And there's a 50,000 word spelling dictionary that comes with BeagleWrite. Proofreading was never like this before!

You can choose from a wide range of fonts, character styles and text formatting options.

BeagleWrite even comes with a built-in font editor, so you can customize existing fonts or create your own brand new ones.

Best of all, what you see on the BeagleWrite screen is what you get on paper. Font styles are displayed just like they print out. BeagleWrite supports all popular printers. And its six print quality options help you get just the look you need—with no guesswork.

Fast, easy and fun. To get everything you could ask for in a word processor, ask for BeagleWrite.
\$79.95



BeagleWrite Desk Accessories

Now you can have all the convenience of Macintosh desk accessories with your IIe, IIc or IIc+. Designed for use with BeagleWrite, Desk Accessories puts five frequently needed on-line accessories in BeagleWrite's pull-down menus!

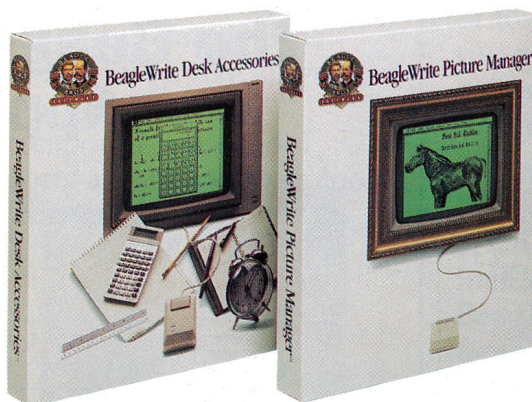
Scientific Calculator - You get easy operation with no loss of features. This true scientific calculator has all arithmetic functions, trigonometric functions, memory, inverse and more.

Clock - Time-stamp your important BeagleWrite documents and display the current date and time right on the screen.

Calendar - This is a desktop tool you'll depend on. Calendar has a day-by-day appointment book and diary for planning your schedule. It even contains an electronic Note Pad.

Control Panel - This accessory lets you control the sound and cursor speed in BeagleWrite.

Best of all, the Control Panel gives you macros—and macros give you speed! Macros reduce multiple keystrokes to a single keystroke. You can enter frequently used phrases into BeagleWrite documents by pressing just a single key. End repetitive typing, save your fingers, and save time!



Puzzle - Enjoy a quick break from work with this interesting game.

Only \$39.95.

BeagleWrite Picture Manager

Picture Manager is a BeagleWrite accessory that lets you add graphics to your documents. Now you can showcase your artistic creations right inside BeagleWrite!

Picture Manager converts your graphics into BeagleWrite fonts. This gives you total flexibility in positioning your pictures in a document, and allows you to mix graphics and text in any combination. You can have up to 15 pictures in a single word processor file, so the graphic potential is almost unlimited!

Picture Manager uses standard Apple II graphics. You are assured of compatibility with all major



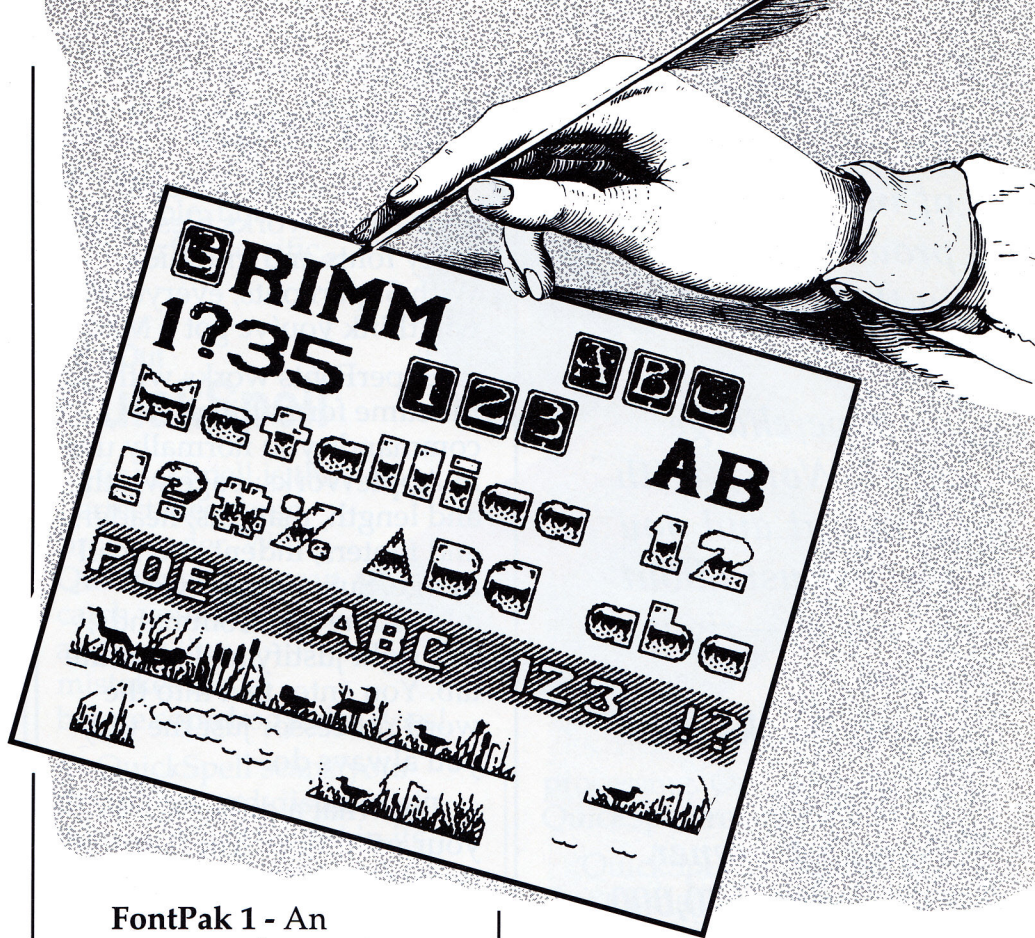
graphics programs for the Ile and Ilc—TimeOut Paint, Mouse Paint, Dazzle Draw, NewsRoom and Print Shop. You can use the BeagleWrite FontEditor—included with BeagleWrite—to further fine-tune your pictures.

If total control of your word processing output is what you want, get Picture Manager. It's fast and easy to use—with or without a mouse. \$39.95

BeagleWrite FontPaks Vol. 1 & 2

Make your print outs more exciting with FontPaks—fonts designed especially for BeagleWrite.

Each FontPak volume contains over 40 striking fonts. These professionally crafted fonts can be added to your documents, and edited with BeagleWrite's built-in font editor.



FontPak 1 - An assortment of attractive fonts—from practical to sensational—for use in the home, school and office.

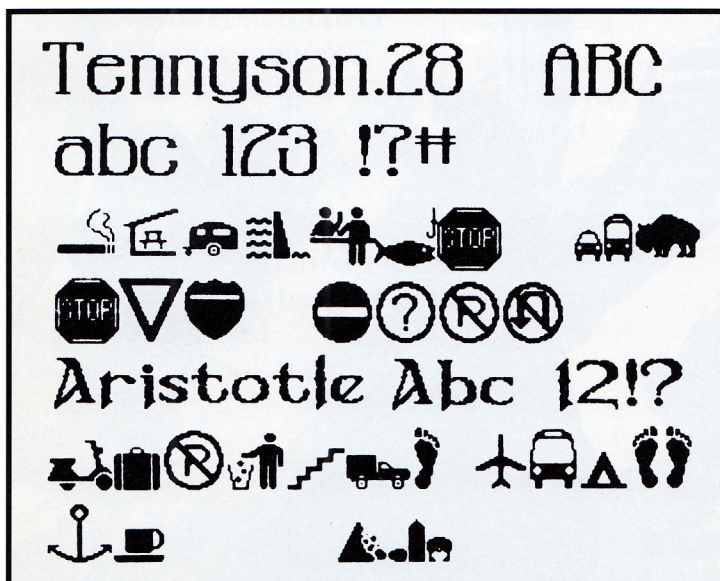
FontPak 2 - A whole series of fonts with pictures,

signs and international symbols. There are also special symbols for use in science and math.

Also in FontPak 2, you get 10 European language fonts, including Italian, French, Swedish, Danish, German, Spanish, Russian, Polish and Czech. Also included are Greek, Arabic and Hebrew characters.

FontPak 2 even contains 10 border fonts. These fonts provide all types of design elements for greeting cards, signs and newsletters that command attention.

Give your words more personality with FontPaks. \$39.95 each.



*TimeOut is the largest collection of integrated productivity tools in the Apple II world**

Supercharge AppleWorks with TimeOut and you can do just about anything—right inside AppleWorks.

Ask any TimeOut owner. With over 250,000 out there, it's easy to find one.

**Maybe even the Universe.*

TimeOut

SuperFonts

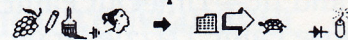
Now you can print out your AppleWorks files with fancy fonts and graphics. With SuperFonts, everyone will think you've got a Mac!

SuperFonts works with the same formatting commands you normally use in AppleWorks: page width and length, margins, headers and footers, indent and mail merge. SuperFonts even adds some new commands, like right justify and absolute tab. You enter text into the word processor just the way you always do.

But what a difference in your print outs! Your documents are printed in eye-catching, proportionally spaced characters in a variety of styles, including underline, boldface, italics, outline, shadow and inverse.

You can even mix graphics and text.

Athens - The quick brown fox



Chicago - The quick brown fox jumped
Courier - The quick

Geneva - The quick

Helvetica - The quick

London - The quick brown

Los Angeles - The



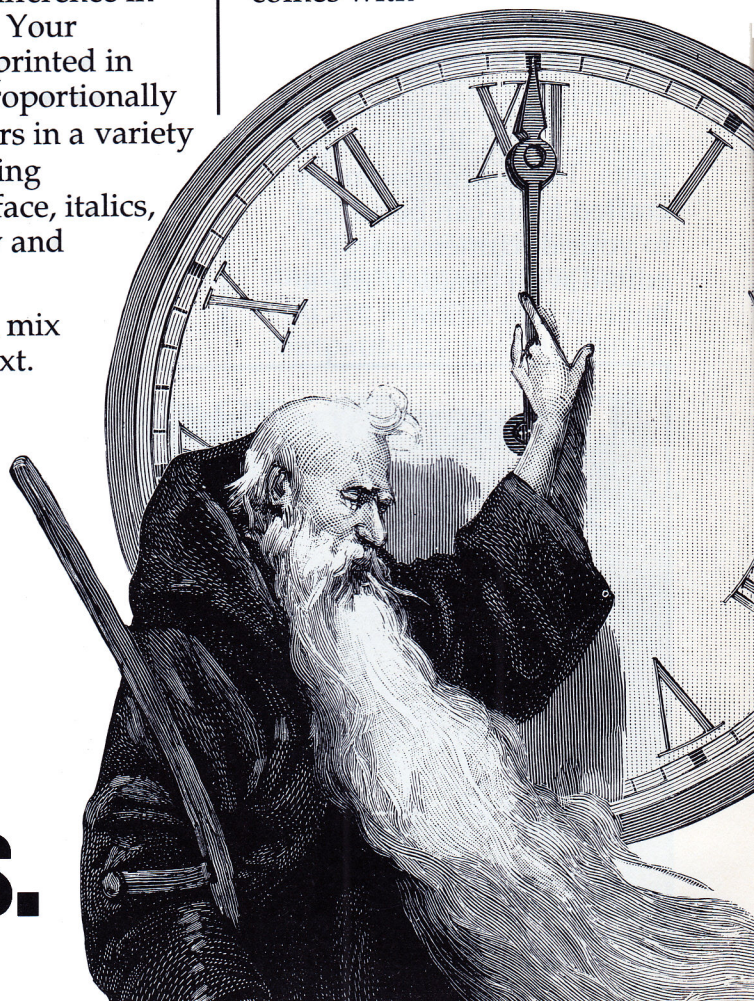
Monaco - The quick brown fox

New York - The

Pictures can be trimmed and positioned right in your documents. You can print to the screen to see how your creations will look on paper.

SuperFonts supports all popular dot matrix printers, comes with

The TimeOut Series of AppleWorks Enhancements.



TimeOut Paint *free* (see page 16 for a description) and includes 47 fonts. **\$69.95**

TimeOut Thesaurus

Never be at a loss for the right word! Place the cursor on any word in the word processor and select Thesaurus from the TimeOut menu. You'll see a list of words with similar meanings—synonyms—displayed on the screen. Choose the new word you want and Thesaurus will automatically replace the original word.

Thesaurus is the perfect tool for brain-storming and idea generating. Synonyms are listed according to parts of speech, such as noun, verb and adjective. This makes it a great educational tool and encourages children and adults alike to expand their vocabularies.

Thesaurus is powerful: more than 5,000 root words contain over 45,000 synonyms! And Thesaurus is fast—a growing list of synonyms appears on the screen instantly. After using TimeOut Thesaurus, you'll never go back to an old-fashioned thesaurus in book form.

The word everyone says about Thesaurus is "Wow"! But you could also say amazing, incredible, fantastic, wonderful, terrific... **\$49.95**

TimeOut QuickSpell

QuickSpell is the perfect electronic proofreader. With QuickSpell, you can catch your typos and spelling mistakes fast—before somebody else does!

QuickSpell scans your document and displays all the words not found in its huge 80,000 word Random House dictionary. Just select a new word from a list of suggested words, and it will be added to your document.

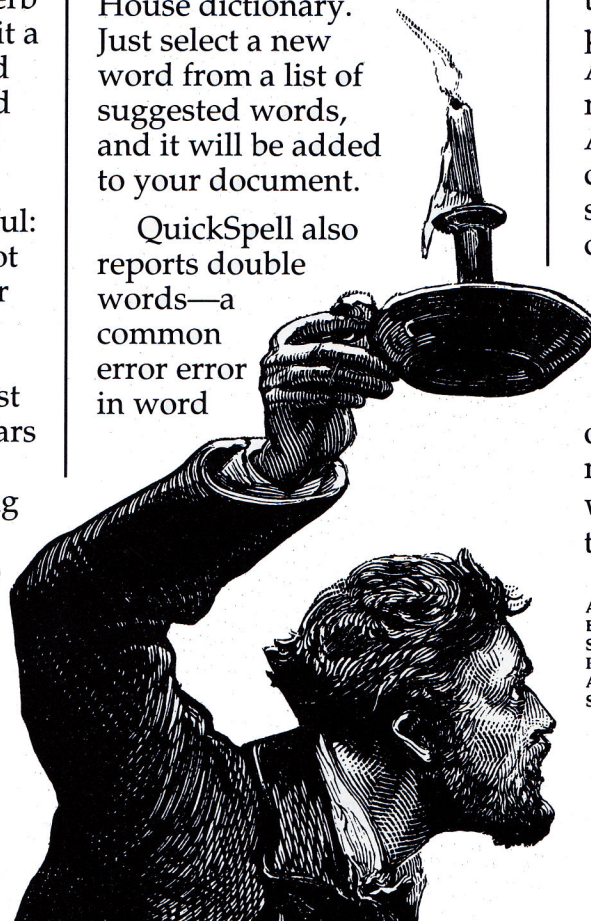
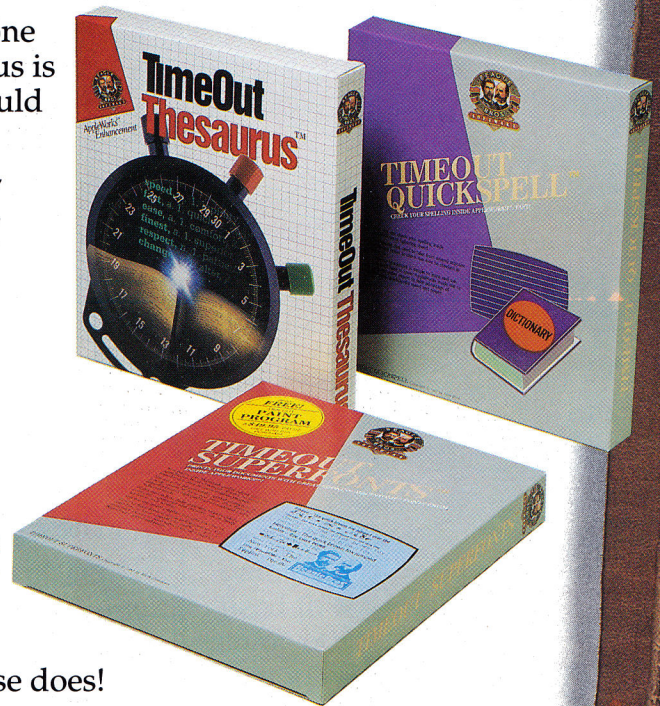
QuickSpell also reports double words—a common error error in word

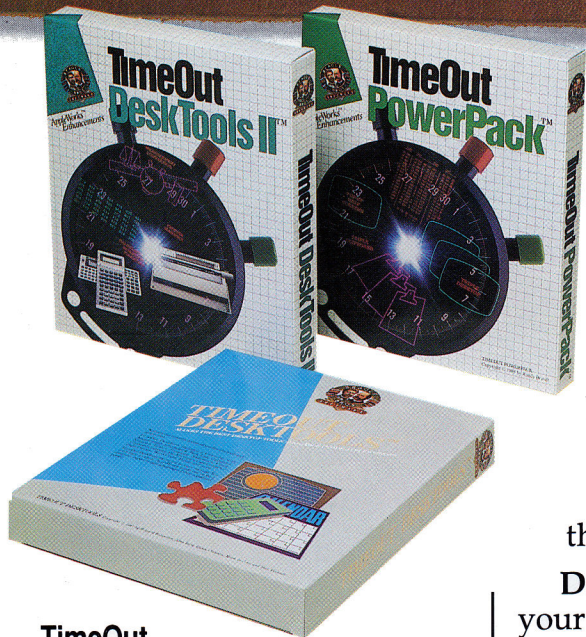
processing. On command, QuickSpell removes them.

QuickSpell is so good that Claris (those nice people who publish AppleWorks) asked us to make it a new feature of AppleWorks v3.0. So we did. Now, Claris is a satisfied TimeOut customer, too.

If you don't have AppleWorks v3.0, get QuickSpell. Or, upgrade your version of AppleWorks. Those misspelled words won't go away by themselves. **\$69.95**

ALAN BIRD HASN'T BEEN ABLE TO SLEEP SINCE CLARIS LET HIM PUT HIS NAME ON THE APPLEWORKS 3.0 STARTUP SCREEN.





AppleWorks help screens—this one is perfect for teachers.

File Librarian - Get organized with a data base of all the files on every one of your ProDOS disks. Put an end to hunting through stacks of disks to find the right file!

Desktop Sorter - Arrange your files in any order in the AppleWorks Desktop Index.

Category Search - Now you can search individual data base categories, rather than the whole data base.

AWP to TXT - Create text files without all of the extra carriage returns that AppleWorks adds to every line.

Line Sorter - Now you can sort columns of word processor information into alphabetical and numerical order—just like in the data base!

All this for only \$49.95!

TimeOut DeskTools

DeskTools adds all kinds of time-saving applications to AppleWorks. Get DeskTools and you'll stay organized and efficient.

Calendar - See your daily and weekly appointments at a glance.

Calculator - A handy calculator with an electronic tape you can edit and print.

Case Converter - Change the case of a whole document in one key press!

Dialer - Place the cursor on a phone number and AppleWorks dials it!

Envelope Addresser - Makes this time-consuming job quick and simple.

Note Pad - This electronic note pad won't let you forget a thing.

Page Preview - Looking before you print will save lots of time and paper!

TimeOut PowerPack

This package of AppleWorks enhancements earned the Editor's Choice Award in the August 1988 issue of InCider Magazine.

Just look at all the Power in PowerPack:

Triple Desktop - This amazing TimeOut application actually increases the number of desktop files you can have at one time to 36!

Triple Clipboard - And to go along with your larger desktop, you can have three clipboards, too!

Program Selector - Lets you leave AppleWorks, go to another program and exit back to AppleWorks *fast*.

ASCII Values - Convert between ASCII, decimal, hex and binary values—great for translating printer codes.

Help Screens - Create your own customized



DAN VERKADE MEASURING HIS EYELASHES WITH MEASUREMENT CONVERTER FROM DESKTOOLS II.

Word Count - Find the exact number of characters, words and lines in your file.

File Encrypter - Protect your important files from prying eyes!

Data Converter - Move data between the spreadsheet, data base and word processor.

Clock - Get the time at a glance.

Puzzle - A game of skill. Only \$49.95!

TimeOut DeskTools II

We thought we had put everything into DeskTools that TimeOut users could ever want. But our customers just couldn't get enough.

Area Codes - Find area codes for over 400 cities.

Calculator+ - A powerful full-function scientific and financial calculator.

Clipboard Viewer - Peek directly at the clipboard.

Directree - Find and load any file without typing!

Disk Tester - Test to be sure your important disks are in good condition.

File Search - Find data anywhere—in any file on the disk!

Measurements - convert units of length and weight.

Print Manager - Send codes right to your printer!

Screen Out - Turns off the screen when you leave the computer.

Stop Watches - Track the elapsed time of five events simultaneously!

A fantastic deal at \$49.95!



TimeOut ReportWriter

ReportWriter is a relational report generator that turns AppleWorks into a powerful business tool! Generate invoices, billing statements, order forms, packing slips and more, inside AppleWorks.

Information from up to 11 different data base, spreadsheet, and word processor files can be included in a report—this blows the top off the AppleWorks data base! There are virtually no limitations now that you can use over 250 data base categories in a single report!

Best of all, ReportWriter uses standard AppleWorks data base files, so you don't need to convert them to some other format. ReportWriter can use all your existing files just the way they are.

ReportWriter can place information into new or existing data base files. This means you can create a sales report that automatically updates the information in an inventory data base.

With ReportWriter you can calculate the total number of days between any two dates. Form letters for aging accounts become super easy to do.

Your reports will print out exactly how they look on the screen. With ReportWriter's built-in editor, you can place information anywhere you want, up to 240 columns across. There's no guesswork involved in creating labels, report cards or attendance records that fit perfectly into existing forms. \$79.95



TimeOut TeleComm

Link AppleWorks to your modem with TimeOut TeleComm. Never leave AppleWorks to log on to your favorite information service.

TimeOut TeleComm is extremely simple to use with no sacrifice in power. It's the telecommunications program you'll never out grow. Since you stay in AppleWorks, learning time is very short!

TimeOut TeleComm's wide selection of file transfer protocols insures you are supported by all information services.

TeleComm's 4,000 line, built-in review buffer can capture

exceptionally long sessions. TeleComm's flexible text sending features allow you to send any word processor file on the desktop, the review buffer or a text file on disk.

Keep your commonly used phone numbers in an AppleWorks data base and TeleComm will dial the number for you, and then send your login sequence after the connection is made.

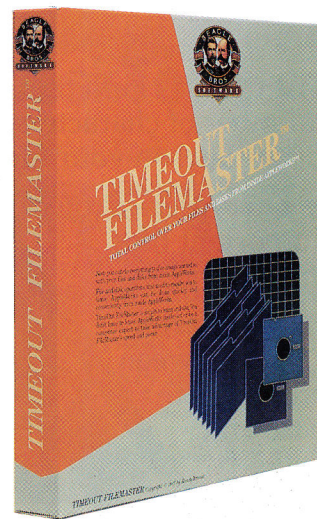
Operation can be set at speeds ranging from 300 to 19,200 Baud. And you can connect your Apple to the office mainframe with TeleComm's terminal emulation capability.

TimeOut TeleComm supports all Hayes compatible AT command set modems—this includes virtually all popular modems in use today. **\$69.95**

TimeOut FileMaster

FileMaster gives you the tools you need to do the smart thing: regularly backing up your files to avoid the horrors of a crashed disk.

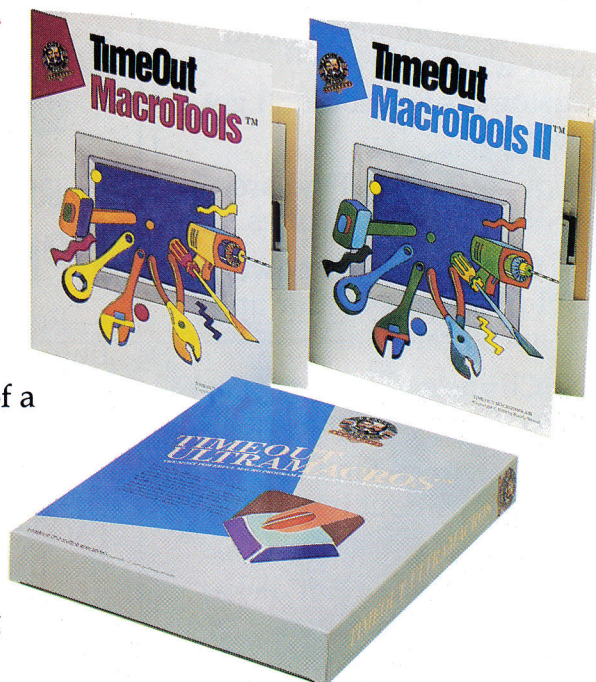
With these file management tools right inside AppleWorks, doing the smart thing



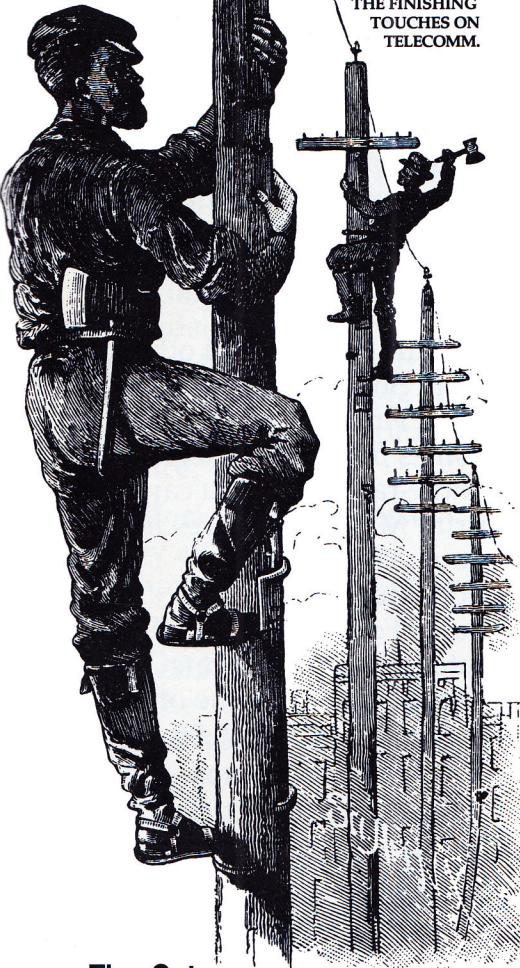
is a lot easier. Not to mention faster.

Copy both files and disks—FileMaster shows you which files have changed since the last time they were backed up.

Other features include Format, Compare, Rename, Lock/Unlock and more. **\$49.95**



MARK DE JONG AND
MARK MUNZ PUTTING
THE FINISHING
TOUCHES ON
TELECOMM.



TimeOut UltraMacros

UltraMacros is the greatest time-saving device since the wheel! No other program has the flexibility of UltraMacros.

A Macro is a pre-recorded series of keystrokes. Usually, pressing a key gives you one character of input. But UltraMacros can record your keystrokes to totally automate AppleWorks.

Pressing one key to activate a macro can send a whole series of keystrokes to

AppleWorks—blindingly fast.

You can have up to 180 macros at one time, with over 4,000 total keystrokes. And believe it or not, UltraMacros even adds mouse control to AppleWorks!

UltraMacros is not limited to the word processor. Macros can be used anywhere in AppleWorks. For example, it takes at least six keystrokes to add a new file to the desktop. Record a macro and do it in one!

For programmers, UltraMacros includes its own language that allows you to actually program AppleWorks. You get full IF-THEN-ELSE logic, string and numeric variables, and lots more.

No matter what your level of sophistication with AppleWorks—from new user to power user—UltraMacros will save you countless hours of typing. **\$59.95**

TimeOut

MacroTools

MacroTools is a collection of macros that teaches AppleWorks new tricks. You'll learn a lot from these macros, too.

- Choose activities from customized menus.
- Change the pitch and duration of the bell.
- Auto-eject disks.
- Automatically save files at pre-set intervals.
- Add a clock, calculator and file encrypter.

Works with AppleWorks v2.0 and 2.1 only. **\$25.00**

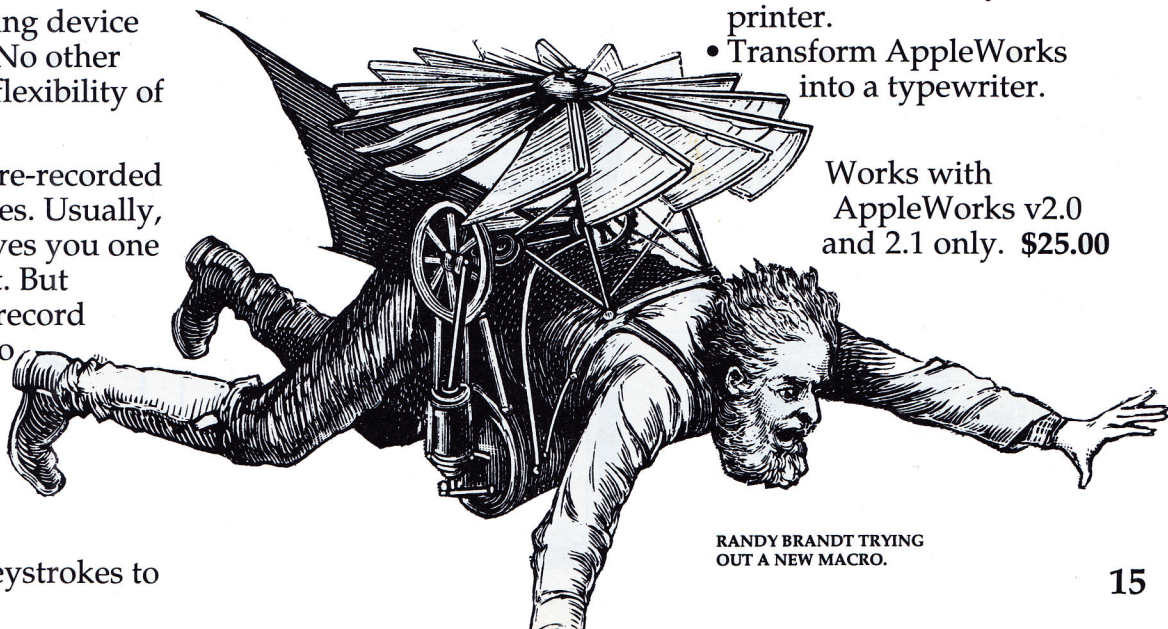
TimeOut

MacroTools II

MacroTools II lets you do even more:

- Print word processor files in 2 or 3 columns.
- Simulate 60 to 90 data base categories.
- Reset the date.
- Send codes directly to the printer.
- Transform AppleWorks into a typewriter.

Works with AppleWorks v2.0 and 2.1 only. **\$25.00**



RANDY BRANDT TRYING
OUT A NEW MACRO.

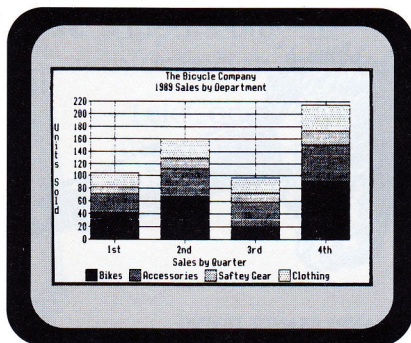
TimeOut Graph

Don't waste time trying to make sense out of columns of numbers! Organize your spreadsheet and data base figures into clear, informative graphs. Get the whole picture with TimeOut Graph.

Your graphs will look like they took hours, but you'll be surprised how fast and easy they are to make. Just choose the type of graph you want and it appears instantly—all ready to print—with titles, subtitles, legends, borders, and more.

You don't have to be a spreadsheet whiz to take advantage of Graph's nine graph types, including Bar, Line, Pie, XY, Area, and Hi-Lo. And TimeOut Paint, the free paint program that comes with Graph, allows you to completely customize your graphs.

Graph prints your finished graphs in three different sizes, and works with all popular dot-matrix printers. **\$89.95**



TimeOut Paint

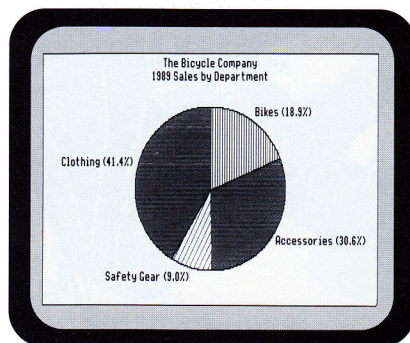
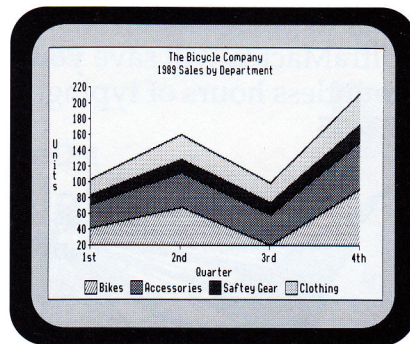
Ever have trouble getting your point across with words? Paint a picture!

TimeOut Paint is a full-featured graphics program with menus, dialog boxes and optional mouse control—inside AppleWorks!

Paint makes you a digital Picasso with commands like Cut, Paste, Invert, Flip, and many more. It's a lot more fun than a pencil and paper!

Paint uses standard Apple II graphics formats, and also pictures from Print Shop and Print Shop GS.

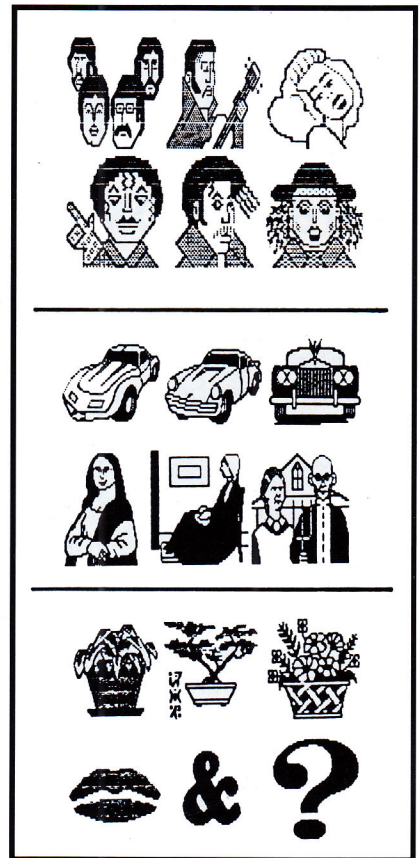
Paint, a \$49.95 value, comes free with Graph and SuperFonts. Personalize your graphs or create original pictures to print with SuperFonts. **FREE!**



MiniPix 1, 2 & 3

The MiniPix series is a huge collection of Print Shop compatible graphics. Each volume contains 200 different pictures you can use to make cards, banners and signs.

MiniPix—and all other Print Shop pictures—work with TimeOut Paint (Paint comes free with SuperFonts and Graph). So, you can print MiniPix pictures in your AppleWorks documents with SuperFonts, or paste them into graphs with TimeOut Graph. Each volume of 200 pictures is only **\$29.95**.



TimeOut SpreadTools

If you spend a lot of time with spreadsheets, you need SpreadTools. These exciting new applications will get you out of the office fast!

Analyzer - Check your spreadsheets for common errors. Analyzer also tracks cell references and lets you see 80 spreadsheet columns at once.

Block Copy - At last! Copy and move cells without creating new rows or columns!

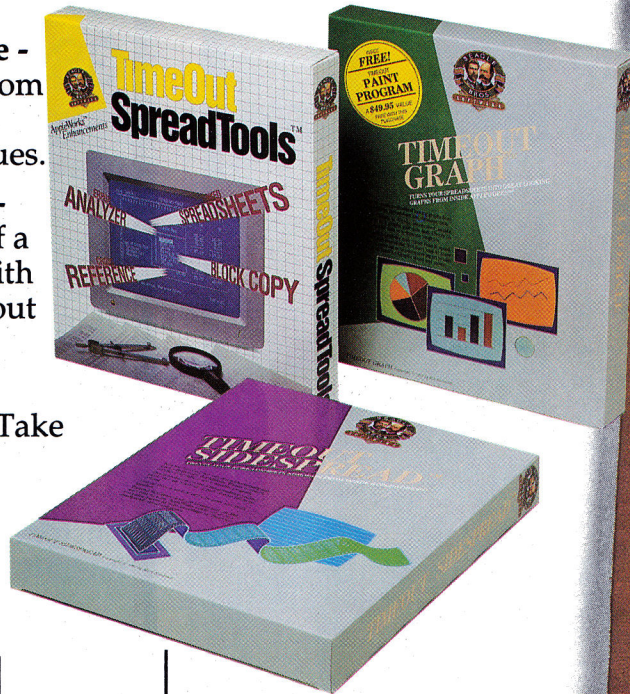
CellLink - Link cells together from up to eleven different spreadsheets at once—you can create gigantic spreadsheets now!

Data Converter - Transfer data between the word processor, data base and spreadsheet.

Formula to Value - Remove formulas from a block of cells and convert them to values.

Quick Columns - Change the width of a range of columns with one key press, without holding down the arrow keys.

Rows <-> Cols - Take a range of rows or columns and rotate them. **\$59.95**



TimeOut SideSpread

Murphy's Law of Spreadsheets: The quality of a spreadsheet is directly proportional to the difficulty in printing it out.

The solution to this age-old problem is SideSpread.

With SideSpread, you print your spreadsheet files sideways—and gain an unbroken vista of your spreadsheet data. No more cutting and pasting sections together, and no more hassling with margins and column widths.

SideSpread prints in two different fonts—Courier

and Monaco—in a wide range of sizes. You can adjust the font size to make your spreadsheet fit the paper, no matter how wide your spreadsheet is.

Best of all, you don't need to leave AppleWorks. Just print the way you always do. SideSpread can even print your word processor and data base files sideways, too!

SideSpread supports three different print qualities and works with all popular dot matrix printers. **\$49.95**



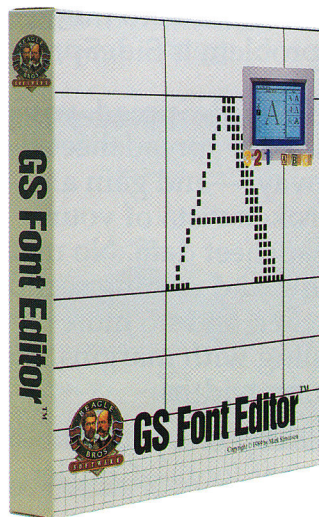
Cell Location: Sec. Name	Cell Location: Sec. Name	Schedule C (Table of Contents + B3)	Schedule E (Table of Contents + B3)	Schedule F (Table of Contents + B3)	Schedule M (Table of Contents + B3)
JA Filing Status	KA Filing Status	Partnership income (if proprietor allowed)	Partnership income (if proprietor allowed)	Partnership income (if proprietor allowed)	Partnership income (if proprietor allowed)
KB Schedule C	KB Schedule C	Rental and royalty income (if proprietor allowed)	Rental and royalty income (if proprietor allowed)	Rental and royalty income (if proprietor allowed)	Rental and royalty income (if proprietor allowed)
KC Schedule D	KC Schedule D	Net capital gain	Net capital gain	Net capital gain	Net capital gain
LD Schedule E	LD Schedule E	Dividend income	Dividend income	Dividend income	Dividend income
ME Schedule F	ME Schedule F	Interest income	Interest income	Interest income	Interest income
MF Schedule G	MF Schedule G	Capital gain	Capital gain	Capital gain	Capital gain
MG Schedule H	MG Schedule H	Other income	Other income	Other income	Other income
MH Schedule I	MH Schedule I	Other income	Other income	Other income	Other income
MI Schedule J	MI Schedule J	Other income	Other income	Other income	Other income
MJ Filing Status	MJ Filing Status	Other income	Other income	Other income	Other income
Summary	Summary	Summary	Summary	Summary	Summary
Total income	Total income	Total income	Total income	Total income	Total income
Total deductions	Total deductions	Total deductions	Total deductions	Total deductions	Total deductions
Total taxable income	Total taxable income	Total taxable income	Total taxable income	Total taxable income	Total taxable income
Total tax	Total tax	Total tax	Total tax	Total tax	Total tax
Total refund	Total refund	Total refund	Total refund	Total refund	Total refund
Total net income	Total net income	Total net income	Total net income	Total net income	Total net income

GS Font Editor

At last! Design your own IIGS system fonts with GS Font Editor.

GS Font Editor is the most powerful and complete program of its kind. GS Font Editor lets you edit standard IIGS system fonts—the same fonts used by virtually all IIGS-specific programs. Customize all of your favorite IIGS software!

But don't be fooled by the name: GS Font Editor runs on the 128K IIE, IIC, and IIC+, as well as the IIGS. Besides the fonts used by IIGS programs, you can also edit fonts used by Beagle Bros' TimeOut SuperFonts and Timeworks' Publish It!



The pull down menus in GS Font Editor contain a wide range of editing options. You can use the mouse to draw lines, boxes or circles. Erase, cut or paste with just a click.

As you create the characters, GS Font Editor shows you how they look in different styles. Underline, italic, outline, boldface and shadow styles are all displayed while you edit.

You can scale existing fonts to get exactly the size you want. GS Font Editor can scale and edit fonts up to 127 points in size—that's large enough for signs!

Fonts do not need to be characters. They can be anything! Have fun using GS Font Editor to create picture fonts. You can even design your own foreign language character sets.

You don't need to go to art school to design professional quality fonts. GS Font Editor makes it as simple as A-B-C. The comprehensive manual clearly explains everything you need to know.

GS Font Editor is great fun for everyone, opening up a whole new world to explore. And it comes complete with a large selection of popular fonts in an assortment of sizes.

Mouse required. \$49.95

"... AND ONE BEAGLEWRITE, AND ONE BEAGLEDRAW, AND, LETS SEE... BETTER THROW IN A COUPLE OF FLEA COLLARS..."





Point-to-Point

Point-to-Point is the award-winning communications program for the whole Apple II line: 128K IIe, IIc, IIc+ and IIGS.

Point-to-Point has received many prestigious honors. InCider magazine voted Point-to-Point the "All Time Best Telecommunications Program" in 1988. In 1987 Point-to-Point earned the "People's Choice Award" from InCider magazine and the "Software Excellence Award" from Nibble magazine.

Point-to-Point works with virtually all communications hardware: Hayes Smartmodem-compatible modems, the Hayes Micromodem and the Novation Apple-Cat II.

Point-to-Point supports the Xmodem and Ymodem standards for transferring files. Also supported is

Binary II, which was invented by Point-to-Point's author, Gary Little.

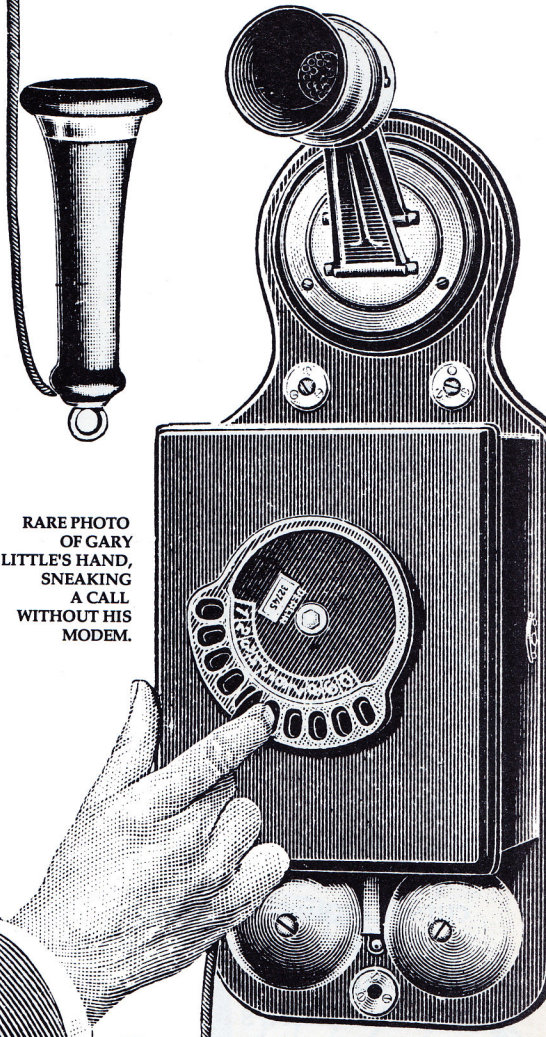
Sending a file is easy with Point-to-Point. Just select the file name from a menu and off it goes! You can even send multiple files at once.

Data entry speed is fast with Point-to-Point's built-in scripting capability. Create custom command sequences that are tailored to your own specific needs.

You can even automate your communications. Pre-set Point-to-Point to call any number at any time you like. Point-to-Point will dial, send or capture text, and then log off by itself. Save time and money by letting Point-to-Point do the work!

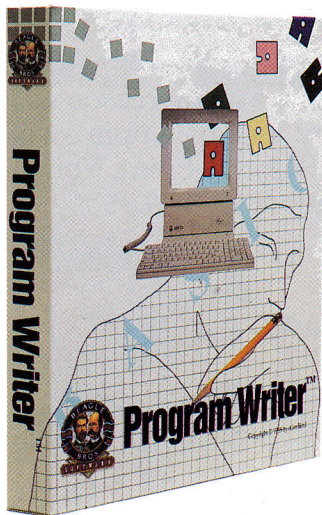
An important feature of Point-to-Point is its ability to connect your Apple to the office Mainframe computer. Point-to-Point supports all the popular terminal emulation protocols: VT52 and VT100.

All these powerful features in one easy to use program is the reason so many serious Apple owners use Point-to-Point. You should, too. \$99.95



RARE PHOTO OF GARY LITTLE'S HAND, SNEAKING A CALL WITHOUT HIS MODEM.





Program Writer

The slowest and most tedious part of Basic programming is entering and editing program lines. But not any more! Program Writer makes writing Basic programs as easy as using a word processor.

Program Writer replaces GPLE's Basic line editor with a full screen text editor that functions like AppleWorks. Move the cursor around the screen and make changes in your program anywhere you want to. There's no need to continually re-list the file and trace over lines. Just use the arrow keys to scroll up or down to where you want to edit. Or use the mouse!

Program Writer adds all these powerful functions: insert, delete, find, search and replace. Use the editor to convert upper and lower case, or list all program variables. And with

Program Writer's auto-number and re-number commands, you'll never need to enter another line number again!

With Program Writer, you can cut text from one program line and paste it into another, or even cut and paste between programs.

One of the most powerful features of Program Writer is its macro capability. Enter commonly used strings like "PRINT" or "GOTO" with one

key press. Design your own strings to input any series of keystrokes. It's like adding function keys!

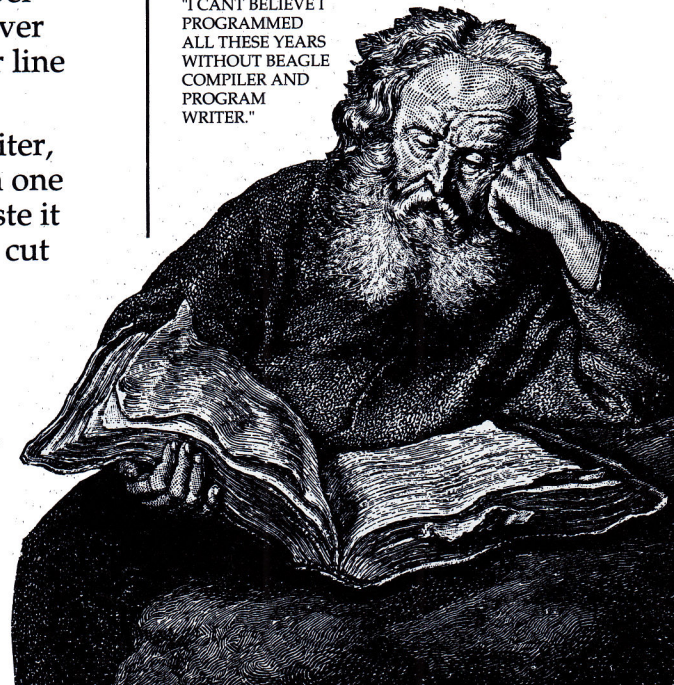
Program Writer runs on the 128K Apple IIe, IIc, IIc+ and IIGS, and comes in both DOS 3.3 and ProDOS. Both versions are guaranteed to increase your output and make Basic programming fun again! \$49.95

Beagle Compiler

The one bad thing about AppleSoft Basic is speed—or should we say, lack of speed. But what can you do? Learn machine language? Forget that!

The secret to blazing Basic is Beagle Compiler. You don't need accelerator cards or chips. With Beagle

"I CAN'T BELIEVE I PROGRAMMED ALL THESE YEARS WITHOUT BEAGLE COMPILER AND PROGRAM WRITER."



Compiler, there are no more sluggish text screens or crawling graphics. You get the same blistering program speeds as the experts!

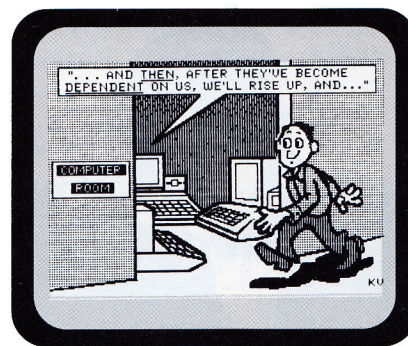
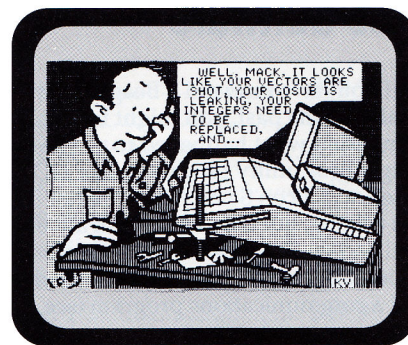
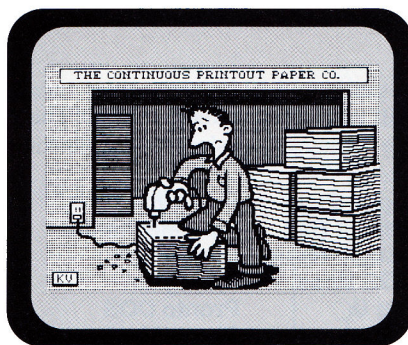
Programming with Beagle Compiler is exactly the same, only faster. Just type RUN and your Basic program blasts off! All AppleSoft and ProDOS commands are supported, so you don't have to modify your existing programs.

With so much attention paid to faster hardware, it's easy to forget the fact that AppleSoft is just plain slow. Beagle Compiler will speed up your Basic programs more than accelerator hardware! Speed increases range from 2 to 15 times the non-compiled speed!

Another important advantage of Beagle Compiler is that it lets your Basic programs use auxiliary memory for program variables. RamWorks-type memory cards, standard Apple memory and even IIGS memory is supported. With Beagle Compiler, your program can fill all of main memory without concern for variable space.

Many commercial programs use Beagle Compiler. It's that good. You won't find a simpler, better way to get Basic up to speed.

Beagle Compiler works only with AppleSoft Basic in ProDOS. **\$74.95**



Triple-Dump

Your printer is about the most expensive peripheral you have. And yet, it's the most difficult to use. Get control with Triple-Dump!

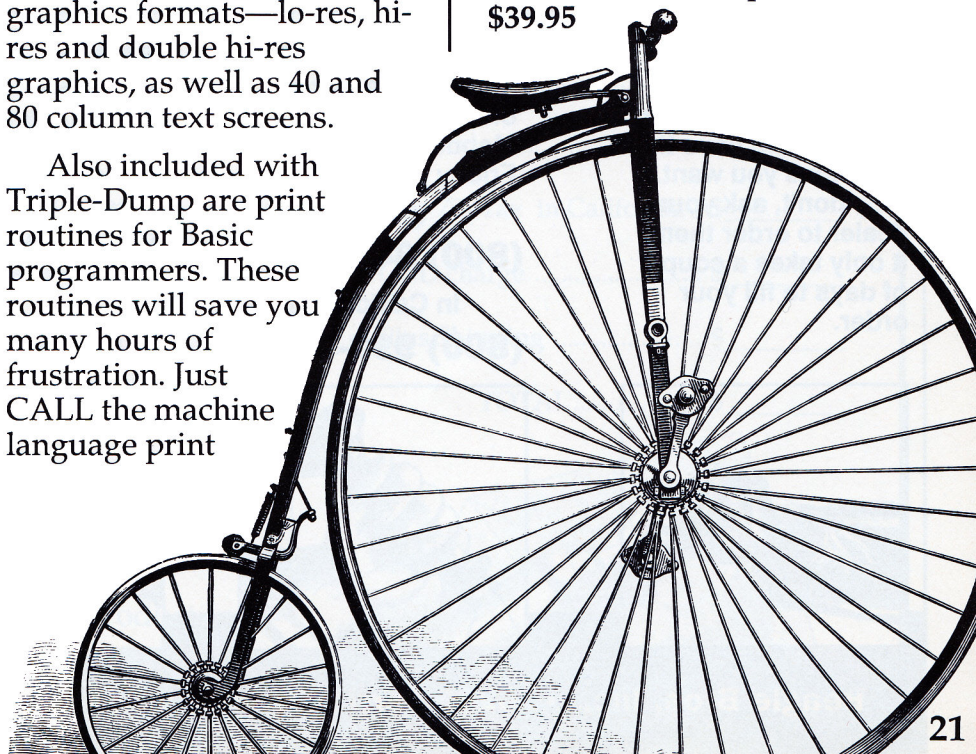
Load your picture into Triple-Dump. Trim, rotate, reverse, magnify or enlarge it. Then print—in any one of the many print qualities Triple-Dump offers.

With Triple-Dump, you can create hard copies of all the standard Apple II graphics formats—lo-res, hi-res and double hi-res graphics, as well as 40 and 80 column text screens.

Also included with Triple-Dump are print routines for Basic programmers. These routines will save you many hours of frustration. Just CALL the machine language print

module and Triple-Dump does the rest.

Triple-Dump supports all dot matrix printers and every Apple II, comes in DOS 3.3 and ProDOS, and includes a banner printer! **\$39.95**



Free Software

If you have received a Beagle Bros catalog in the past, you might be wondering what happened to all the old Beagle Bros utility programs, like DOS Boss and Silicon Salad. They are not in this catalog, but they are all still alive and well on Pro-Beagle—the Beagle Bros bulletin board. All you need is a modem and a communications program (see

Pro Beagle: (619) 558-6151

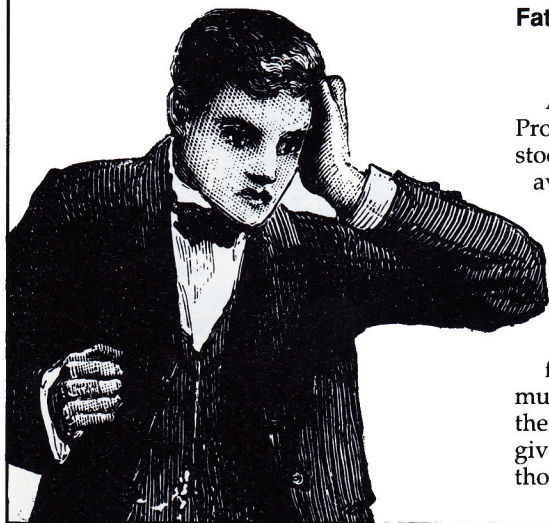
pages 14 and 19 for some great ones) and you can have them for free! There are some real classics in this collection:

**Alpha Plot
Beagle Bag
Beagle Basic
DOS Boss
Big U
D Code
Double Take
Extra K
Fat Cat**

**Flex Type
Font Mechanic
Frame-Up
Pro-Byter
Pronto DOS
Shape Mechanic
Silicon Salad
Tip Disk #1
Utility City**

A few of these programs are not on Pro-Beagle yet. As the last copies in stock are sold, we are making them available for the asking. If you must have one of these titles right now, and it's not on Pro-Beagle, you could always buy it! They are selling at 50% off.

Like we said, these programs are free. You are welcome to use them as much as you want—even share them with your friends. But please don't give away any programs other than those listed here.



HERE'S HOW TO ORDER

Go to your favorite software store.

They should have the programs you want. If they don't, ask your dealer to order them. It only takes a couple of days to fill your order.

Call us toll free.

You can order from 8:00am to 5:00pm Monday through Friday (Pacific time).

Orders
(800) 345-1750

In California
(800) 992-4022

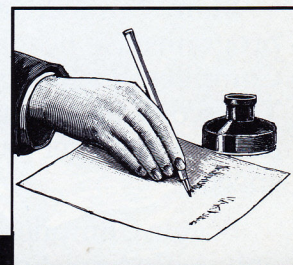
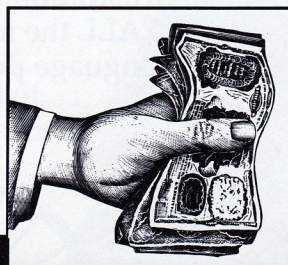
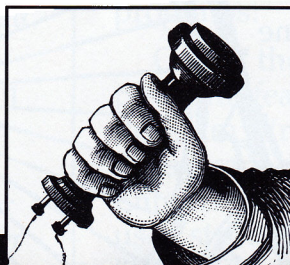
FAX your orders.

Just FAX a copy of the completed order form. Your transmission will receive the same prompt attention as a telephone order.

(619) 452-6374

Order by mail.

Send a check, money order, Visa or MasterCard number along with the completed order form.



Updates

To update your Beagle Bros software, all you need to do is send us your original disk (one size only, please) and \$10 for each program. This charge includes handling and return postage. If you have 8 or more programs to update, the cost is \$75 for all of them.

If you have any questions concerning updates, please call our offices at (619) 452-5500. For product information and technical questions, call (619) 452-5502.

Beagle Buddies

Beagle Bros is leading the rest of the Apple II world with innovative customer support—Beagle Buddies. Beagle Buddies are members of local Apple user groups who are available to answer questions you may have about Beagle Bros software. You'll find your local Beagle Buddy can be a great help—even with software updates at reduced rates!

There are hundreds of Beagle Buddies across the U.S., and even overseas. For the name of a Beagle Buddy in your area, contact your local user group, or write to Charlie Appleseed—the main Beagle Buddy—in care of Beagle Bros.

ORDER FORM

Complete the information on this form and send it to back us, along with payment.

Check the method of payment:

- Visa
- MasterCard
- Check
- Money Order
- COD (Please add \$3.00 for COD orders)

For orders outside the U.S., your check or money order must be drawn on a U.S. bank.

Please add the following charges to your order shipping to the U.S. and Canada (Foreign orders must call for shipping charges):

1 item: \$3.50
Each additional item: \$1.00

Name _____

Address _____

City _____ State and Zip _____

Visa or Master Card Number _____

Expiration date _____

Signature _____

Daytime phone _____ Evening phone _____

Comments _____

Mail your order to: **Beagle Bros, Inc.**
 6215 Ferris Square, Suite 100
 San Diego, California 92121

(800) 345-1750 Orders - U.S.A
 (800) 992-4022 Orders - California
 (619) 452-6374 FAX Number
 (619) 452-5502 Customer Service and Product Info.

- BeagleDraw \$89.95
- BeagleWrite \$79.95
- BeagleWrite Desk Accessories \$39.95
- BeagleWrite FontPak 1 \$39.95
- BeagleWrite FontPak 2 \$39.95
- BeagleWrite Picture Manager \$39.95
- BeagleWrite GS \$99.95
- Clip Art Vol. 1 \$49.95
- Font Library Vol. 1 \$49.95
- GS Desk Accessories \$59.95
- GS Font Editor \$49.95
- MiniPix 1 \$29.95
- MiniPix 2 \$29.95
- MiniPix 3 \$29.95
- Point-to-Point \$99.95
- Program Writer \$49.95
- TimeOut DeskTools \$49.95
- TimeOut DeskTools II \$49.95
- TimeOut FileMaster \$49.95
- TimeOut Graph (w/Paint) \$89.95
- TimeOut MacroTools \$25.00
- TimeOut MacroTools II \$25.00
- TimeOut PowerPack \$49.95
- TimeOut QuickSpell \$69.95
- TimeOut ReportWriter \$79.95
- TimeOut SideSpread \$49.95
- TimeOut SpreadTools \$59.95
- TimeOut SuperFonts (w/Paint) .. \$69.95
- TimeOut TeleComm \$69.95
- TimeOut Thesaurus \$49.95
- TimeOut UltraMacros \$59.95
- Triple-Dump \$39.95

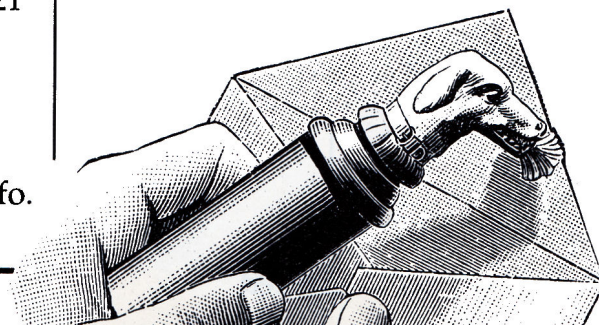
Subtotal \$ _____

Plus 7% Tax in California . \$ _____

COD charge \$ _____

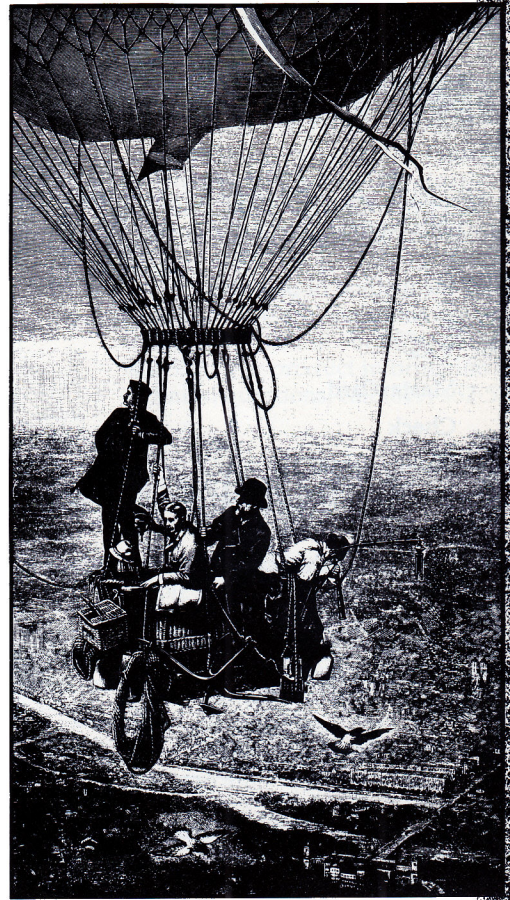
Plus Shipping \$ _____

TOTAL..... \$ _____



You are looking at your new **Beagle Bros Catalog** for Fall/Winter 1989. Inside are descriptions of our entire line of Apple II software. We are offering many exciting new products you won't want to miss.

Would you help us clean up our mailing list? If you received more than one copy of our catalog, please send us the duplicate mailing labels along with your order. And by the way, give the extra catalog to your friend or user group. They'll like it, too. Thanks!



Beagle Bros, Inc.

6215 Ferris Square, Suite 100
San Diego, California 92121



Bulk Rate
U.S. Postage
PAID
San Diego
California
Permit #1391

Address Correction Requested